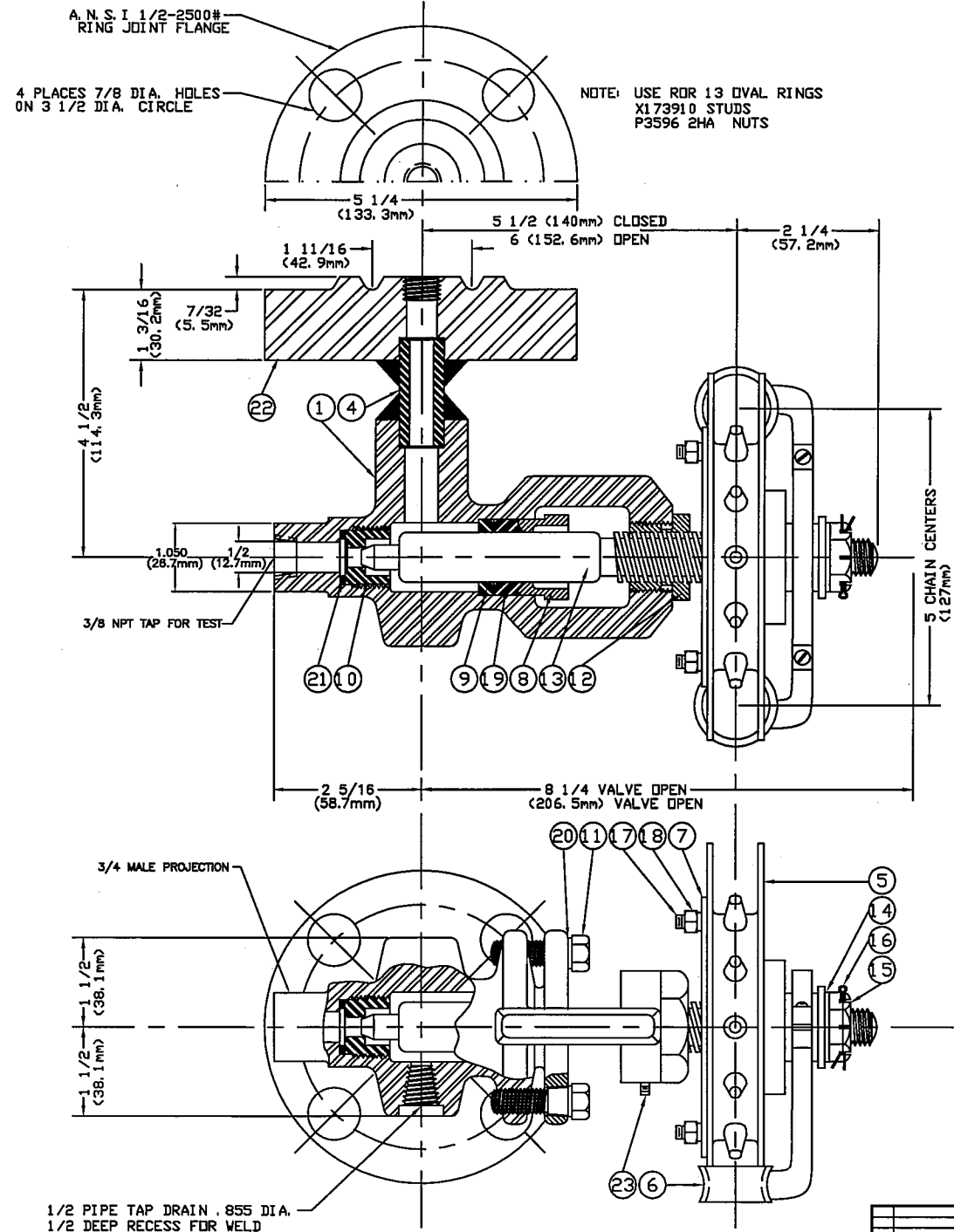


BILL OF MATERIAL - PER SET

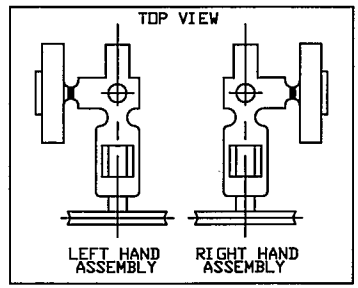
ITEM	PART NO.	QUAN.	DESCRIPTION	MATERIAL	DWG NO.
1	SG777-1MSV	1	VALVE BODY, LOWER(FORGED STL.)	ASTM A105	SG7058-A
2	SG777-1MSV	1	VALVE BODY, UPPER(FORGED STL.)	ASTM A105	SG7058-A
3					
4	SG777-3	2	CONNECTOR	A106 GR. B	B-9197
5	SG777-4	2	SPROCKET CHAIN WHEEL	CAST IRON	
6	SG777-5	2	CHAIN GUIDE	CAST IRON	
7	SG777-6	2	SPIDER ADAPTOR	CAST IRON	B-8278
8	SG754-2	2	PACKING YOKE (DUCTILE IRON)	ASTM A395-55T	B-9198
9	SG754-3	2	PACKING WASHER	C1018 STEEL	B-9198
10	SG454-24	2	SEAT	420 STNLS. STL.	SG7017-A
11	XI 72341	4	CAP SCREW, HEX 7/16-14x1 1/2	STEEL - GR. B7	
12	SG754-6	2	STEM BUSHING	416 STNLS. STL.	B-9198
13	SG754-7	2	STEM	303 STNLS. STL.	B-9198
14	XI 74220	2	PLAIN WASHER, 17/32 ID, 11/16 OD	STEEL	
15	XI 71480	2	SLOTTED HEX NUT, SEMI-FINISH, 1/2-13	STEEL	
16	XI 71790	2	COTTER PIN, 1/8 x 1 1/4	STEEL	
17	XI 71000	6	CARRIAGE BOLT, 5/16-18 x 1	STEEL	
18	XI 71320	6	SQUARE NUT, 5/16-18	STEEL	
19	SG854-4	2	STEM PACKING CARTRIDGE	GRAFOL	SG7021-A
20	XI 74212	4	PLAIN WASHER, 15/32 ID, 59/64 OD	STEEL	
21	XI 75500	2	VALVE SEAT GASKET	MONEL	A-5418
22	SG477-2	2	FLANGE 1/2-2500# R. T. J.	ASTM A105	A-5819
23	XI 73120	2	ALLEN CUP POINT SET SCREW, 10-24x1/4	STEEL	

NOTE: ON UPPER VALVE, CHAIN WHEEL AND GUIDE ARE ASSEMBLED IN REVERSE POSITION.



LOWER VALVE SHOWN RIGHT HAND ASSEMBLY

PLEASE SELECT ARRANGEMENT REQUIRED



MAXIMUM PRESSURE RATING:
2500 P. S. I. @ 670°F
HYDROTEST AT 3750 P. S. I.

REV	DESCRIPTION	DATE	BY	CHK
1	drawn from 3/8 npt/ev odc 08 067	3/21/08	at	

THE CLARK-RELIANCE CORP.
STRONGSVILLE, OHIO

SG777MSW FORGED STEEL WATER GAGE VALVE

MATERIAL
DRAWN BY ST SCALE NONE
CHECKED BY DATE 3-2-07
DRAWING NO. REV.
SG1199-A 1