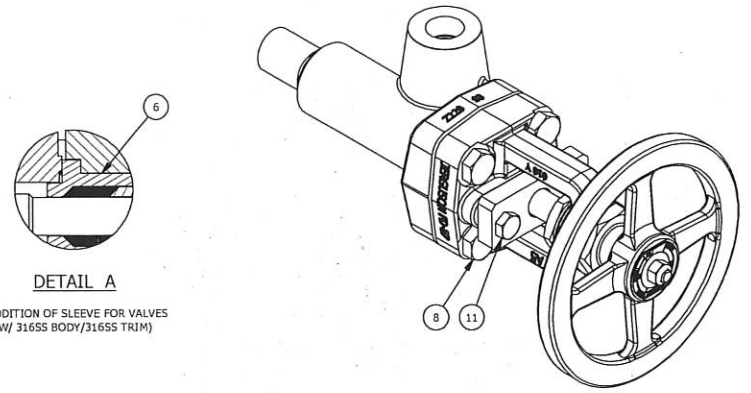


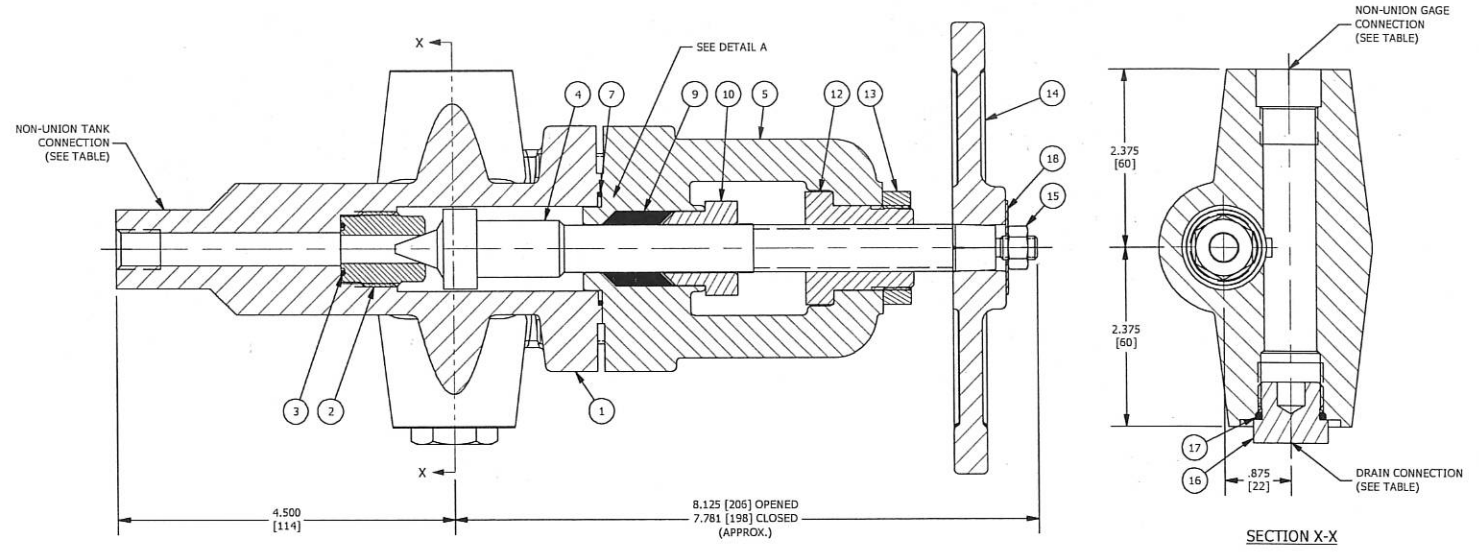
BILL OF MATERIAL (CS BODY/416SS TRIM)					BILL OF MATERIAL (316SS BODY/316SS TRIM)				
NO.	NAME OF PART	QTY.	MATERIAL	SPECIFICATION	NO.	NAME OF PART	QTY.	MATERIAL	SPECIFICATION
1	BODY, BOTTOM VALVE	1	CARBON STEEL	PER ORDER A105	1	BODY, BOTTOM VALVE	1	316/316LSS	PER ORDER A182 GR.F316/316L
2	SEAT	1	416SS	V11429 U3 QQ-S-763	2	SEAT	1	316/316LSS	V11429 T2 A479
3	O-RING, SEAT	1	VITON	G204	3	O-RING, SEAT	1	VITON	G204
4	STEM, LOOSE KNOB	1	416SS/STELLITE	S10328 3 U	4	STEM, LOOSE KNOB	1	316SS/STELLITE	S10348 3 T
5	YOKE	1	CARBON STEEL	L942 B A105	5	YOKE	1	CARBON STEEL	L1001 B A105
6	-----	-	-----	-----	6	SLEEVE	1	316/316LSS	V11431 T4
7	O-RING, YOKE	1	VITON	G199	7	O-RING, YOKE	1	VITON	G199
8	CAP SCREW	4	ALLOY STEEL	P6475 B71 A193 GR.B7	8	CAP SCREW	4	ALLOY STEEL	P6475 B71 A193 GR.B7
9	PACKING	1	GRAFOIL	G266	9	PACKING	1	GRAFOIL	G266
10	PACKING GLAND	1	CARBON STEEL	V18257 9 AL4 A36	10	PACKING GLAND	1	CARBON STEEL	V18257 9 AL4 A36
11	CAP SCREW	2	ALLOY STEEL	P5729 B71 A193 GR.B7	11	CAP SCREW	2	ALLOY STEEL	P5729 B71 A193 GR.B7
12	BUSHING	1	ALUMINUM BRONZE	P8375 F32 QQ-C-465-B	12	BUSHING	1	ALUMINUM BRONZE	P8375 F32 QQ-C-465-B
13	NUT, BUSHING	1	CARBON STEEL	P5665 A6 A108	13	NUT, BUSHING	1	CARBON STEEL	P5665 A6 A108
14	HANDWHEEL	1	ALUMINUM	V9808 E B26	14	HANDWHEEL	1	ALUMINUM	V9808 E B26
15	NUT, STEM	1	CARBON STEEL	V9822 A	15	NUT, STEM	1	CARBON STEEL	V9822 A
16	PLUG	1	CARBON STEEL	V11433 A6 A108	16	PLUG	1	CARBON STEEL	V11433 A6 A108
17	O-RING, PLUG	1	VITON	G198	17	O-RING, PLUG	1	VITON	G198
18	RATING TAG	1	304SS	V22038 1	18	RATING TAG	1	304SS	V22038 1



DETAIL A
(ADDITION OF SLEEVE FOR VALVES
W/ 316SS BODY/316SS TRIM)

- NOTES:
1. DIMENSIONS IN INCHES W/ mm EQUIVALENTS IN BRACKETS
 2. TOP AND BOTTOM VALVES SAME EXCEPT OPPOSITE HANDING (I.E. MIRROR IMAGES) (BOTTOM LEFT HAND VALVE SHOWN)
 3. VALVE RATING - CARBON STEEL & 316SS:
10000 PSI @ 100°F (703 KG/CM² @ 38°C)
 4. MAXIMUM OPERATING TEMPERATURE = 400°F (204°C)
 5. HORIZONTAL BALL CHECK NOT AVAILABLE
 6. SEE TABLES FOR AVAILABLE STANDARD CONNECTIONS
 7. REFER TO THE FOLLOWING (FOR):
• CATALOG BULLETIN J100.54 (ADDITIONAL INFORMATION)
• IOM BULLETIN J500.10 (INSTRUCTIONS)
 8. VALVE "TRIM" = SEAT & STEM
 9. CONSULT FACTORY FOR ALTERNATE MATERIAL OPTIONS (NOT AVAILABLE IN ALL 316SS)

TANK CONNECTION				
1/2" MSW	1/2" FSW	3/4" MSW	3/4" FSW	1" MSW
GAGE CONNECTION				
1/2" OR 3/4" FSW ONLY				
VENT / DRAIN CONNECTION				
7/8"-14UNF W/ PLUG ONLY				



<p>MANUFACTURED BY Clark-Reliance® 16633 FOLTZ PARKWAY STRONGSVILLE, OH 44149 USA (440) 572-1500 www.clarkreliance.com © Clark-Reliance® Corporation. All Rights Reserved.</p>	<p>JERGUSON®</p> <p>#86HO OFFSET VALVE (PLAIN-CLOSING) NON-UNION TANK & GAGE CONNECTIONS</p>	DRAWN: DDenk	REV.:
		CHECKED: HK	0
		DATE: 7/8/2013	
		REVISION: 0	
		DRAWING NO.:	86HO