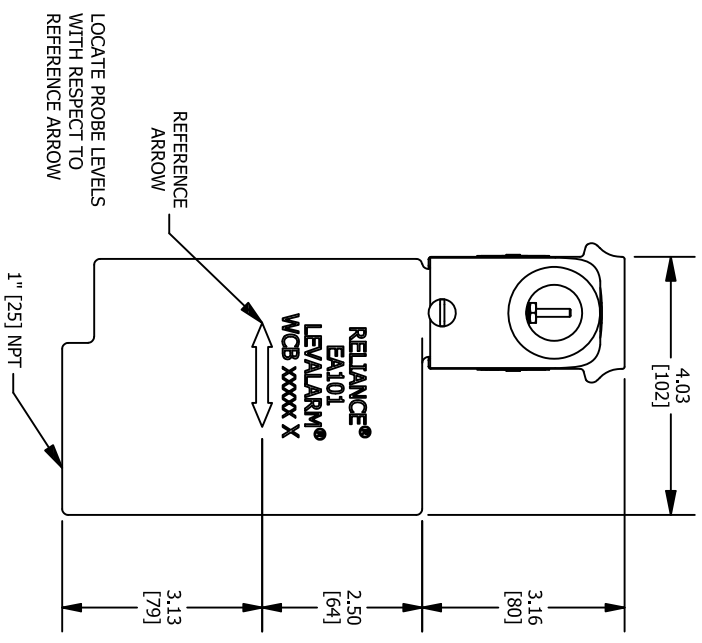
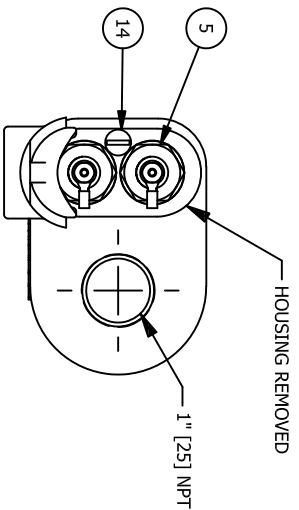
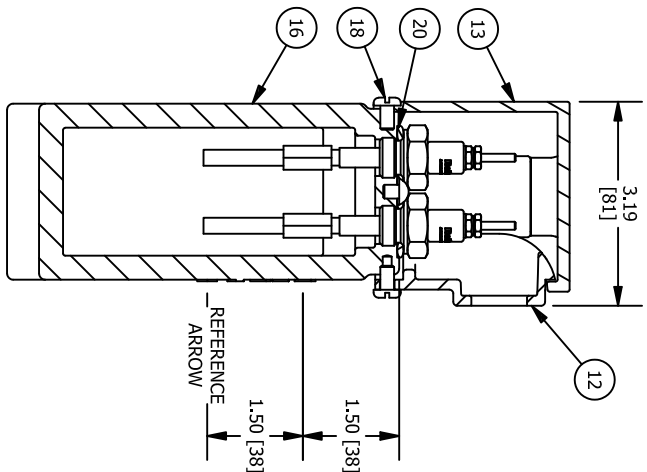
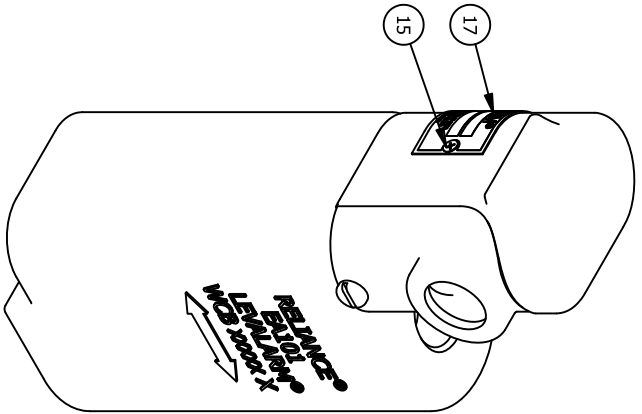


BILL OF MATERIAL

NO.	QTY.	PART NO.	DESCRIPTION	MATERIAL	DWG.
13	1	REA100 18	ELECTRODE FITTING HOUSING	ALUMINUM	B-86697
16	1	REA101S 1 2	BODY	CARBON STEEL	A-13879
12	1	REA15R 22	CONDUIT BRACKET	ALUMINUM	B-86697
20	2	SEE NOTE 2	GASKET		
5	2	SEE NOTE 2	PROBE		
14	1	X172990	ROUND HEAD MACHINE SCREW	BRASS	
18	2	X172993	ROUND HEAD MACHINE SCREW	18-8SS	
15	2	X173200	PAN HEAD MACHINE SCREW		
17	1	X174610	NAMEPLATE	ALUMINIUM	A-7863

NOTES:

1. UNITS IN INCHES W/ MM EQUIVALENTS IN BRACKETS
2. DESIGN PRESSURE RATINGS: 450 PSI "I" PROBES W/ WCM 13 GASKETS 1000 PSI "V" PROBES W/ X175500 GASKETS 1800 PSI "ZG" PROBES W/ E10 105 GASKETS
3. THIS EA101 LEVALARM CAN BE USED FOR THE FOLLOWING CONTROL AND ALARM FUNCTIONS:
 - W/ ONE PROBE AND ONE RELAY, EITHER:
 - A. HIGH ALARM
 - B. LOW ALARM
 - W/ TWO PROBES AND FUEL CUTOFF (SAME LEVEL)
 - C. FUEL CUTOFF
 - D. LOW ALARM AND FUEL CUTOFF (SAME LEVEL)
 - W/ TWO PROBES AND ONE RELAY
 - A. PUMP CONTROL (FOR LEVEL DIFFERENTIALS UP TO 3")
 - W/ TWO PROBES AND TWO RELAYS, EITHER:
 - A. DUAL FUEL CUTOFF
 - B. LOW ALARM AND FUEL CUTOFF (DIFFERENT LEVELS)



REV	DATE	INVENTOR REDRAW	REVISION	KAT	BY
8	10/27/2014				

MANUFACTURED BY



16633 FOLTZ PARKWAY
STRONGSVILLE, OH 44149 USA
(440) 572-1500 | www.clarkreliance.com
© Clark-Reliance® Corporation. All Rights Reserved.

CLARK-RELIANCE®

EA101S LEVALARM ASSEMBLY

PART NUMBER: REA101S		TOLERANCE CLASS (PER PES-004): B	
MATERIAL:			
REVISION: 8 PER CDC 09-105/(KAT)			
DRAWN: KAT	DRAWING NO.:		
CHECKED: MK	B-9567		
DATE: 10/27/2014			
REV.: 8			