

### FEATURES

- Magnetic Snap-Action
- All 316SS Wetted Parts
- SPDT or DPDT Contacts
- Integral Conduit Box
- Magnetic Latching
- CSA Certified, Class I, Grp. C&D, NEMA 4X
- Single Seal Per ISA 12.27.07-2011

### TYPICAL APPLICATIONS

#### Petroleum Processing

Fuels, lubricating oils, hydraulic fluids, separators, treaters, crude oil, fuel-water interfaces.

#### Chemical Processing

Acids, alkalis, ammonia, paint, lacquer, peroxides, alcohols, printing inks, freon.

#### Food Processing

Beverages, fruit juices, cooking oils.

#### Pharmaceutical and Cosmetic

Liquids, emulsions, lotions, solutions.

#### Marine Operations

Fuel oil, hydraulic fluid, bilge level alarms, sea water, coolant, condensate levels, cargo levels.

#### Reactor Operation

Level control, alarm signaling.

#### Cryogenic Liquids

Liquid methane, nitrogen, carbon dioxide, oxygen.

#### Water Industry

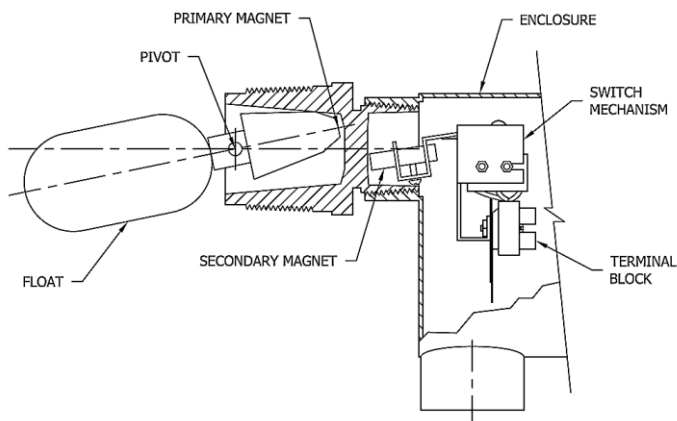
Flood control, reservoir levels.

#### General

Leak detection, overflow alarm, low level alarm in evaporators.

### OPERATION

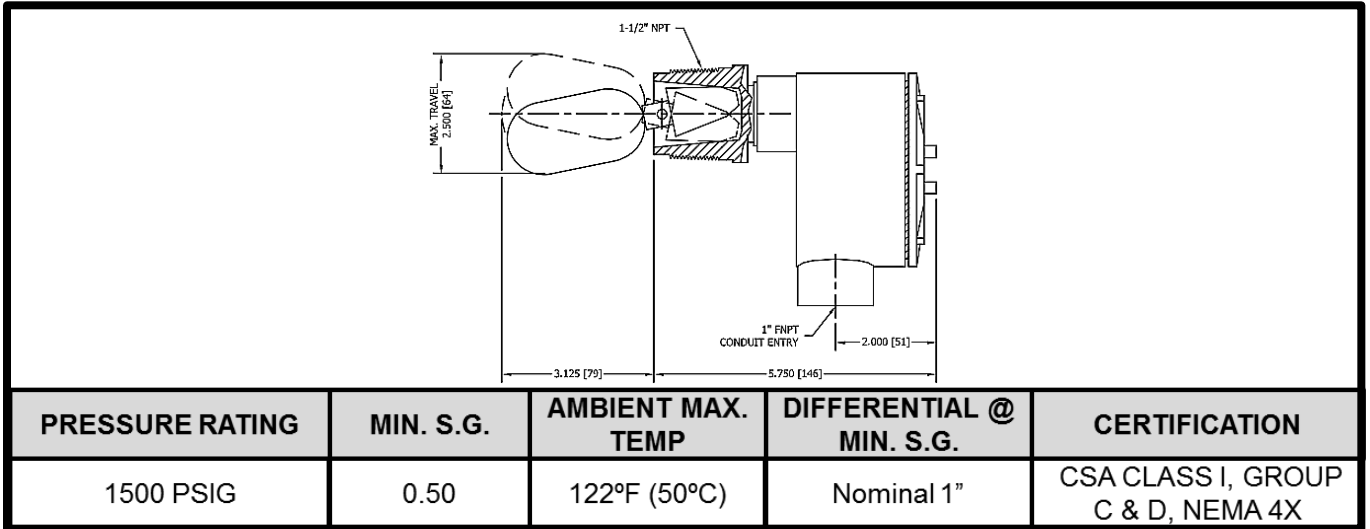
Operation is achieved using the time proven principle of repelling magnetic forces.



One permanent magnet, the primary magnet, forms part of a float assembly which rises and falls with changing liquid level. The secondary magnet is positioned within the enclosure so that the adjacent poles of the two magnets repel each other through a non-magnetic, stainless steel barrier. A change in liquid level moves the float through its permissible range of travel causing the float magnet to pivot and repel the switch magnet. The resulting snap action of the repelling magnets actuates the switch.

# JMLS Horizontal Mount Magnet Level Switch

## DIMENSIONS AND SPECIFICATIONS – TYPICAL JMLS2100



## MODEL SELECTION GUIDE

| MAGNETIC LEVEL SWITCH |          |               |                                 |                                                        |
|-----------------------|----------|---------------|---------------------------------|--------------------------------------------------------|
| JMLS                  | CODE     | BODY MATERIAL | TRIM MATERIAL                   |                                                        |
|                       | 2        | T-316 SST     | T-316 SST                       |                                                        |
|                       |          | <b>CODE</b>   | <b>SWITCH FORM AND FUNCTION</b> | <b>MAX. AMBIENT TEMP</b>                               |
|                       |          | 1             | SPDT STANDARD SWITCH            | 122°F (50°C)                                           |
|                       |          | 2             | DPDT STANDARD SWITCH            | 122°F (50°C)                                           |
|                       |          | 3             | SPDT HIGH AMP RATING            | 122°F (50°C)                                           |
|                       |          | 4             | DPDT HIGH AMP RATING            | 122°F (50°C)                                           |
|                       |          | 7             | SPDT HERMETICALLY SEALED        | 122°F (50°C)                                           |
|                       |          | 8             | DPDT HERMETICALLY SEALED        | 122°F (50°C)                                           |
|                       |          | 9             | SPDT GOLD PLATED                | 122°F (50°C)                                           |
|                       |          | 0             | DPDT GOLD PLATED                | 122°F (50°C)                                           |
|                       |          |               | <b>CONNECTION</b>               | <b>PRESSURE RATING</b>                                 |
|                       |          |               | 1 1/2" NPT                      | 1500 PSIG @ 100°F                                      |
|                       |          |               | 2" NPT                          | 1500 PSIG @ 100°F                                      |
|                       |          |               |                                 | <b>CODE</b>                                            |
|                       |          |               |                                 | 00                                                     |
|                       |          |               |                                 | 70                                                     |
|                       |          |               |                                 | <b>CARBON STEEL</b>                                    |
|                       |          |               |                                 | <b>316SS</b>                                           |
|                       |          |               | 2 1/2" 150# RF THREADED         | 285 PSIG @ 100°F                                       |
|                       |          |               | 2 1/2" 300# RF THREADED         | 740 PSIG @ 100°F                                       |
|                       |          |               | 2 1/2" 600# RF THREADED         | 1480 PSIG @ 100°F                                      |
|                       |          |               | 3" 150# RF THREADED             | 285 PSIG @ 100°F                                       |
|                       |          |               | 3" 300# RF THREADED             | 740 PSIG @ 100°F                                       |
|                       |          |               | 3" 600# RF THREADED             | 1480 PSIG @ 100°F                                      |
|                       |          |               | <b>CODE</b>                     | <b>MIN. SG SS FLOAT</b>                                |
|                       |          |               | FExxx <sup>2</sup>              | FLOAT EXTENSION (INCHES)                               |
|                       |          |               | FE 0800                         | FLOAT EXTENSION 8.00"                                  |
|                       |          |               | FE 0600                         | FLOAT EXTENSION 6.00"                                  |
|                       |          |               | FE 0400                         | FLOAT EXTENSION 4.00"                                  |
|                       |          |               | FE 0300                         | FLOAT EXTENSION 3.00"                                  |
|                       |          |               | P                               | POLYPROPYLENE FLOAT                                    |
|                       |          |               | BW                              | BACK WELDED FLANGE                                     |
|                       |          |               |                                 | MIN SG = 0.40 (NO FLOAT EXT); MAX PROCESS TEMP = 250°F |
| <b>JMLS</b>           | <b>2</b> | <b>1</b>      | <b>00</b>                       | <b>TYPICAL MODEL NUMBER</b>                            |

<sup>1</sup>DC Rating = Inductive Listed before Resistive EX: 3(5) = 3A Inductive or 5A Resistive @ 24 VDC

<sup>2</sup>NOTE: EX, FE0225 = 2-1/4" Extension

