

# RFQ and Purchase Order Specification Work Sheets

Section: R406.006  
Date: 4-30-2020  
Supersedes: 11-1-2011  
Page 1

## P4000 Series Simpliports

DIMENSION CHART -- STANDARD SIZES												TO BE SPECIFIED BY CUSTOMER			BILL OF MATERIAL						
SIMPLIPORT WINDOW PART NO.	NO. OF UNITS	VISION A		MIN. WATER GAGE CENTERS FOR VALVE SERIES INDICATED				BODY D		F KIND				SIMPLIPORT PART NO.	B	F	ITEM	PART NO. (QTY)	DESCRIPTION	MATERIAL	DWG. NO.
		INCHES	MM	4000	4040	4080	4084	4120	4124	4160	4164	4200	4204								
P4005	5	10 1/4	(260)	17 3/4	(450)	21	(530)	11 7/8	(301)	12 3/4	(320)	10 3/16	(250)	10 3/8	(263)						
P4006	6	12 5/8	(320)	20 1/8	(513)	23 3/8	(593)	14 1/4	(363)	15 1/8	(384)	11 3/8	(290)	11 9/16	(293)						
P4007	7	15	(380)	22 1/2	(571)	25 3/4	(654)	16 5/8	(423)	17 1/2	(444)	12 9/16	(310)	12 3/4	(323)						
P4008	8	17 3/8	(443)	24 7/8	(623)	28 1/8	(714)	19	(480)	19 7/8	(504)	13 3/4	(340)	13 15/16	(343)						
P4009	9	19 3/4	(501)	27 1/4	(692)	30 1/2	(774)	21 3/8	(540)	22 1/4	(563)	15 1/4	(380)	15 1/4	(383)						
P4010	10	22 1/8	(561)	29 3/8	(750)	32 7/8	(835)	23 3/4	(603)	24 5/8	(625)	16 1/8	(400)	16 3/16	(413)						

**FIGURE A**  
FOR NIPPLE CONNECTION (1500 PSI MAX) (10345 KPa MAXIMUM)  
DESIGN TEMPERATURE: 550°F, 315°C

SCREWED FOR 0-900 WSP  
WELDED FOR 901-1500 WSP

**NOTES:**  
 -- \* TO COMPLETE PART NO. ADD NO. OF WINDOW UNITS  
 -- ITEMS 2 THRU 10 FORM ONE COMPLETE ASSEMBLY OF SINGLE WINDOW UNIT  
 -- ITEMS 2 THRU 7 COMPRISE A REPLACEMENT PACKAGE INCLUDING THE MODULE, TO BE ORDERED AS PART NO. PW-873 (SEE EXPLODED VIEW)  
 -- ITEMS 8 THRU 10 COMPRISE A PACKING NUT ASSMBLY, TO BE ORDERED AS PART NO. PW-68 (SEE EXPLODED VIEW)  
 -- ASSEMBLY OF ILLUMINATOR & HOOD ON GAGE REF. DWG. AB-14916

ITEM	PART NO.	DWG. NO.
SIMPLIPORT ILLUMINATOR	PW	1-1031
WEATHERPROOF	PW*	1-1034
PACKING NUT ASSMBLY	PW68*	1-1034
SIMPLIPORT MODULE	PW873*	1-1034
PACKING NUT ASSMBLY	PW68*	1-1034
PERISCOPE-WEATHERPROOF	PHPW*	1-9134
PERISCOPE-WEATHERPROOF	PHPW*	1-9134
PERISCOPE-WEATHERPROOF	PHPW*	1-9134
PERISCOPE-WEATHERPROOF	PHPW*	1-9134
PERISCOPE-WEATHERPROOF WITH SOCKET DUST	PHPW*	1-9134
PERISCOPE-WEATHERPROOF WITH FLANGE DUST	PHPW*	1-9134

DIMENSIONS IN INCHES  
DIMENSIONS IN ( ) MILLIMETERS

PATENT NO. 3,187,573  
HYDROTEST AT 2200 PSI (15518 KPa)

MATERIAL: SEE INDIVIDUAL PART DRAWINGS  
DRAWN: RLG SCALE: NONE  
CHKD: JSM DATE: 10/20/97  
DRAWING NO.: PS1483-A REV: 0

**CLARK-RELiance CORP.**  
STRONGSVILLE, OHIO, U.S.A.

SIMPLIPORT 4000 SERIES GAGE ASS'Y  
0-1500 WSP

REV.	DESCRIPTION	DATE	SIG.

UNLESS OTHERWISE NOTED:  
 TOLERANCES ON DIMENSIONS & FITS:  
 FIN. FRACTIONS, UP TO 1" INCL., (.010)  
 FIN. FRACTIONS, 1" INCL., UP TO 3/4" (0.004)  
 FIN. FRACTIONS, 3/4" INCL., UP TO 1 1/2" (0.004)  
 FIN. FRACTIONS, 1 1/2" INCL., UP TO 10" (0.004)  
 FIN. FRACTIONS, 10" INCL., UP TO 100" (0.004)  
 HOLE: FIN. FRACTIONS, UP TO 1" INCL., (.010)  
 HOLE: FIN. FRACTIONS, 1" INCL., UP TO 10" (0.004)  
 HOLE: FIN. FRACTIONS, 10" INCL., UP TO 100" (0.004)

Please complete all information fields in this worksheet and submit with your RFQ (Request For Quote) or Purchase Order. The use of these worksheets has proven to greatly decrease Engineering time and virtually eliminate specification errors.

# Reliance®

A PRODUCT OF CLARK-RELiance

16633 Foltz Parkway • Strongsville, OH 44149 USA  
Telephone: +1 (440) 572-1500  
www.clark-reliance.com • RelianceAppEng@clark-reliance.com

Must accompany P.O with all fields completed

Customer: \_\_\_\_\_  
Address: \_\_\_\_\_  
Contact Name: \_\_\_\_\_  
Phone No.: \_\_\_\_\_  
E-mail: \_\_\_\_\_

Date: \_\_\_\_\_  
P.O. No.: \_\_\_\_\_  
Quote Ref.: \_\_\_\_\_  
On Site Req'd.: \_\_\_\_\_  
Other Info.: \_\_\_\_\_

### REQUIRED INFORMATION

Design Pressure: \_\_\_\_\_  
Design Temperature: \_\_\_\_\_  
Visibility Required: \_\_\_\_\_  
Model No.: \_\_\_\_\_

Water Gage Valve Connection:  $\frac{3}{4}$ " O.D. Nipple is standard  
Special Side Flange Specification: When required  $\frac{1}{2}$ "-2500 RTJ Flange is standard

Flange Size: \_\_\_\_\_  
Flange Class: \_\_\_\_\_  
Flange Face: \_\_\_\_\_

#### P4000 Series: Dimension Chart-Standard Size 0-1500 PSI (103 Bar)

Simpliport Model No.	# of Ports	Vision A inches (mm)	Min. Centers B inches (mm)	Body D inches (mm)	Min. F inches (mm)
P4005	5	10.25 (260)	21.00 (533)	11.88 (301)	10.38 (263)
P4006	6	12.62 (320)	23.37 (593)	14.25 (362)	11.56 (294)
P4007	7	15.00 (380)	25.75 (654)	16.62 (422)	12.75 (324)
P4008	8	17.38 (441)	28.12 (714)	19.00 (482)	13.94 (354)
P4009	9	19.75 (501)	30.50 (774)	21.38 (543)	15.25 (387)
P4010	10	22.12 (562)	32.88 (835)	23.75 (603)	16.31 (414)

#### P4000 Series: Multi-Section Sizes 0-1500 PSI (103 Bar)

P4011	11	25.50 (650)	36.25 (920)	27.12 (688)	18.00 (457)
P4012	12	27.88 (708)	38.62 (980)	29.50 (749)	19.19 (487)
P4013	13	30.25 (768)	41.00 (1041)	31.88 (809)	20.38 (517)
P4014	14	32.62 (828)	43.38 (1101)	34.25 (869)	21.56 (547)
P4015	15	35.00 (885)	45.75 (1162)	36.62 (930)	22.75 (577)
P4016	16	37.38 (949)	48.12 (1222)	39.00 (990)	23.94 (608)
P4017	17	39.75 (1009)	50.50 (1282)	41.38 (1051)	25.12 (638)
P4018	18	42.12 (1069)	52.88 (1343)	43.75 (1111)	26.31 (668)
P4019	19	44.50 (1130)	55.25 (1403)	46.12 (1171)	27.50 (698)
P4020	20	46.88 (1190)	57.62 (1463)	48.50 (1231)	28.69 (728)
P4021	21	50.12 (1273)	61.00 (1549)	51.88 (1317)	30.13 (765)
P4022	22	52.62 (1336)	63.38 (1609)	54.25 (1377)	31.56 (801)
P4023	23	55.00 (1397)	65.75 (1670)	56.62 (1438)	32.75 (831)
P4024	24	57.38 (1457)	68.12 (1730)	59.00 (1498)	33.94 (862)
P4025	25	59.75 (1517)	70.50 (1790)	61.38 (1559)	35.12 (892)
P4026	26	62.12 (1577)	72.88 (1851)	63.75 (1619)	36.31 (922)
P4027	27	64.50 (1638)	75.25 (1911)	66.12 (1679)	37.50 (952)
P4028	28	66.88 (1698)	77.62 (1971)	68.50 (1739)	38.68 (982)
P4029	29	69.25 (1758)	80.00 (2032)	70.88 (1800)	39.88 (1012)
P4030	30	71.62 (1819)	82.38 (2092)	73.25 (1860)	41.06 (1043)

Note: Minimum Centers "B" are for Steel Water Gage Valves. See Bulletin ABS,TD for information on water gage valves.

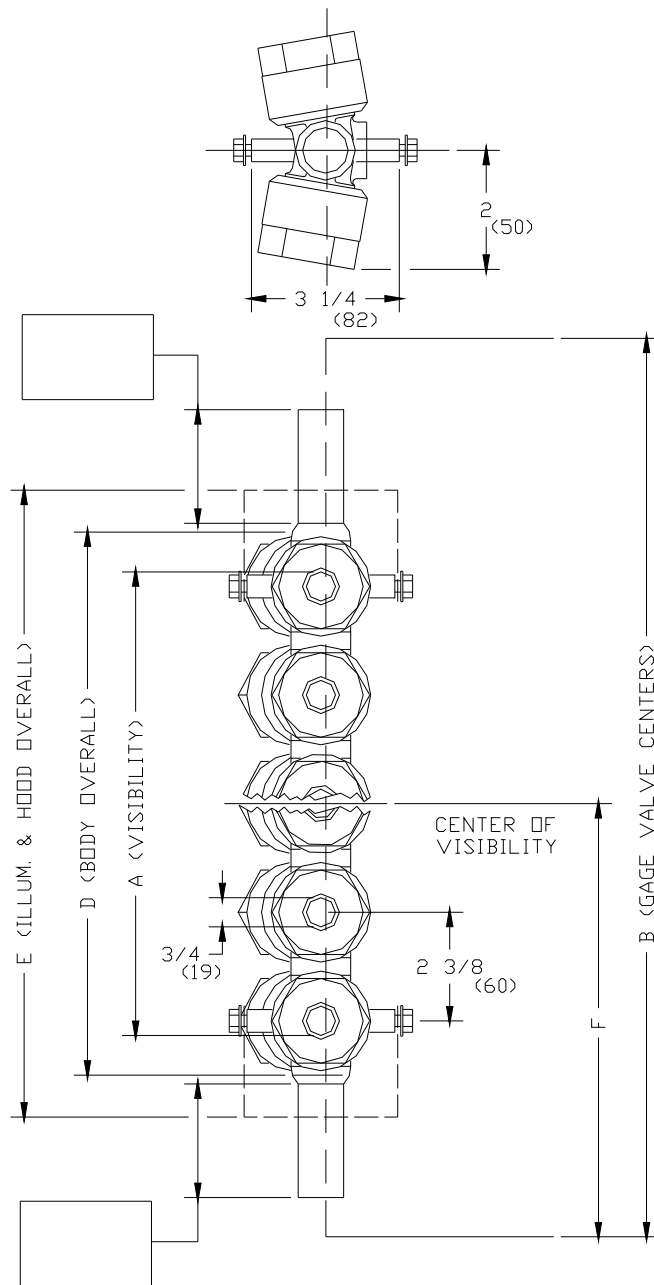
Note to Specifier: The three most important dimensions are A, B and F. (D is a constant.) Ask for a complete Reliance Engineered Product Specification Guide.

### ILLUMINATION REQUIREMENTS

Power Requirements:  120 VAC  240 VAC  
Area Classification:  Ordinary (non-hazardous)  
 Hazardous – Specify: \_\_\_\_\_

Simpliport 180 Wide Angle LED Illumination   
Simpliport 180 Wide Angle LED Illumination (Hazardous Areas – Local Power Supply)   
Simpliport 180 Wide Angle LED Illumination (Hazardous Areas – Remote Power Supply)   
Optional Mirrors (specify) \_\_\_\_\_

Note: Section I of the ASME Code requires that ported type gages must be fitted with proper illumination to provide visual discrimination between water and steam.



*Note: Consult factory if smaller minimum centers, non-standard flanges, or other special items are required*

Additional notes:

---



---



---