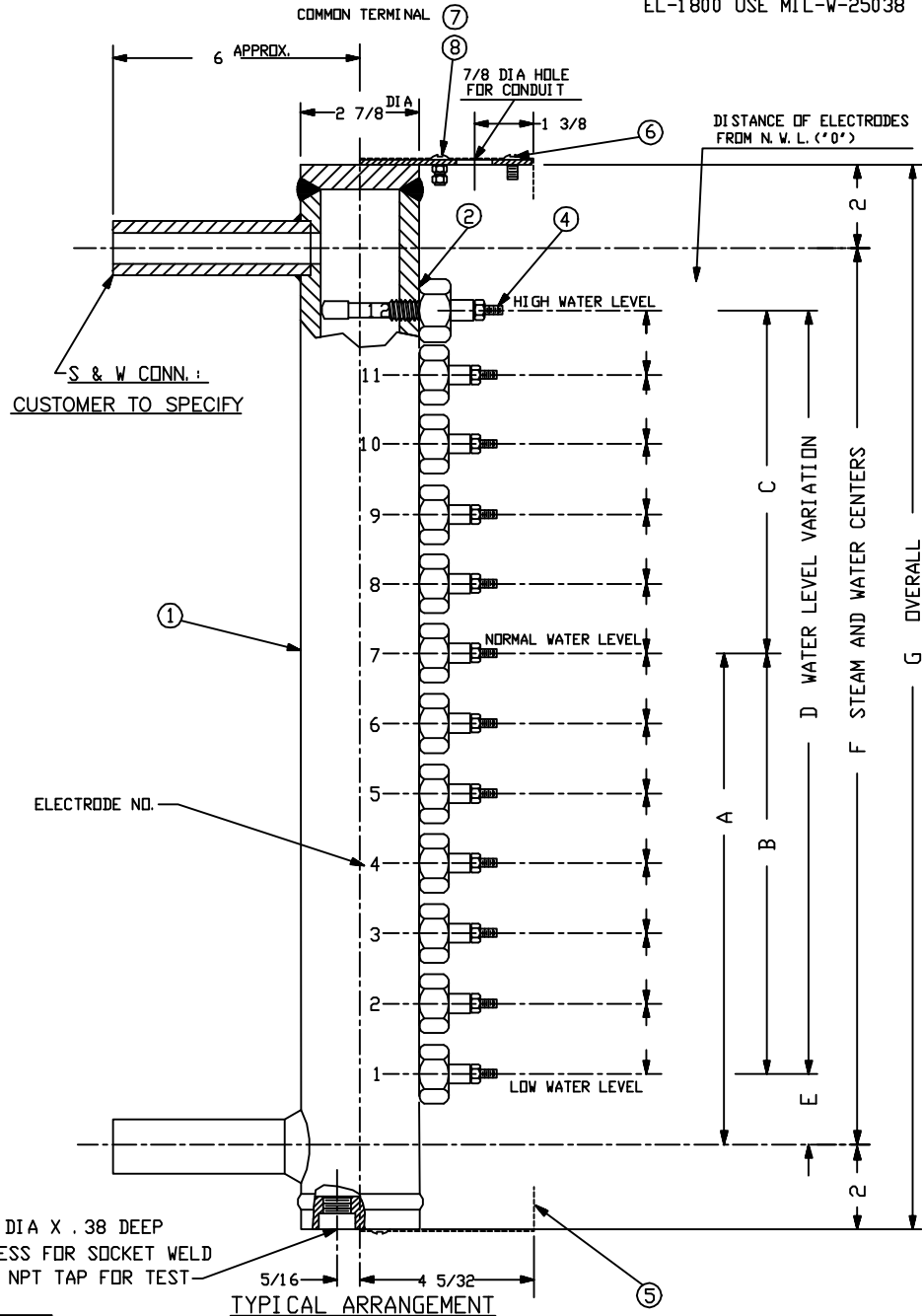


ELECTROLEV FURNISHED WITH 30-INCH, HIGH-TEMPERATURE LEADS CONNECTED TO EACH ELECTRODE FITTING  
 USE 18 A. W. G. TEFLON INSULATED WIRE  
 EL-450 & EL-1000 USE TYPE E  
 MIL-W-168780  
 EL-1800 USE MIL-W-25038

BILL OF MATERIAL

ITEM	PART NO.	QTY.	DESCRIPTION	MATERIAL	DWG. NO.
1	EL-1P	1	BODY, SEAMLESS STEEL PIPE	ASTM A106	
2	ELF-2	1	ELECTRODE FITTING HOUSING	SHEET STL.	B-9124
3		2	SCREW, R. H. MACH. 10-24 X 3/8	BRASS	
4	*	12	ELECTRODE FITTING ASSEMBLY		
5	**	12	GASKET		
6		1	SCREW, R. H. MACH. 10-24 X 1/2	BRASS	
7		2	NUT, HEX 10-24	BRASS	



DIMENSIONS TO BE SPECIFIED BY CUSTOMER TO SUIT REQUIREMENTS		ELECTRODE NO. DIMENSIONS TO BE SPECIFIED BY CUSTOMER TO SUIT REQUIREMENTS	
A		12	
B		11	
C		10	
D		9	
E		8	
F		7	
G		6	
		5	
		4	
		3	
		2	
		1	

NOTES:

- 1) FOR PRESSURES OVER 1800 PSI SEE ELF 3000 ELECTROLEV ASSEMBLY PER DWG. NO. B-9122
- 2) SHUTOFF VALVES SHOULD BE PLACED BETWEEN STEAM DRUM AND ELECTROLEV
- 3) MODEL NO.:
  - (A) EL450-12 W.S.P. 0-450 P.S.I. AT 456°F.  
\*T020 ELECTRODE ASSEMBLY  
\*\*WCM-13 GASKET  
HYDROTEST @ 700 P.S.I.
  - (B) EL1000-12 W.S.P. 451-1000 P.S.I. AT 545°F.  
\*V020 ELECTRODE ASSEMBLY  
\*\*E10-10 GASKET  
HYDROTEST @ 1500
  - (C) EL1800-12 W.S.P. 1001-1800 P.S.I. AT 621°F.  
\*Z020 ELECTRODE ASSEMBLY  
\*\*E10-10S GASKET  
HYDROTEST @ 2700 P.S.I.
- 4) CUSTOMER TO SPECIFY:
  - (A) MODEL OF ELECTROLEV
  - (B) TYPE OF S & W CONN.
  - (C) STD. OR W'PROOF HOUSING
- 5) MINIMUM SPACING BETWEEN PROBES IS 1"
- 6) MINIMUM DISTANCE BETWEEN TOP PROBE AND STEAM CONN. IS 1"
- 7) MINIMUM E DIMENSION IS 1"

THE CLARK-RELIANCE CORP. STRINGSVILLE, OHIO U.S.A.	
MODELS EL450, EL1000, & EL1800 12 PROBE ELECTROLEV ASSEMBLY	
SCALE NONE	DATE
DRAWN BY	
TRACED BY	
CHECKED BY	NO.