

MATERIAL: SEE B/M
 DRAWN: TFK
 SCALE: NONE
 CHECKED: DEP
 DATE: 9-15-95

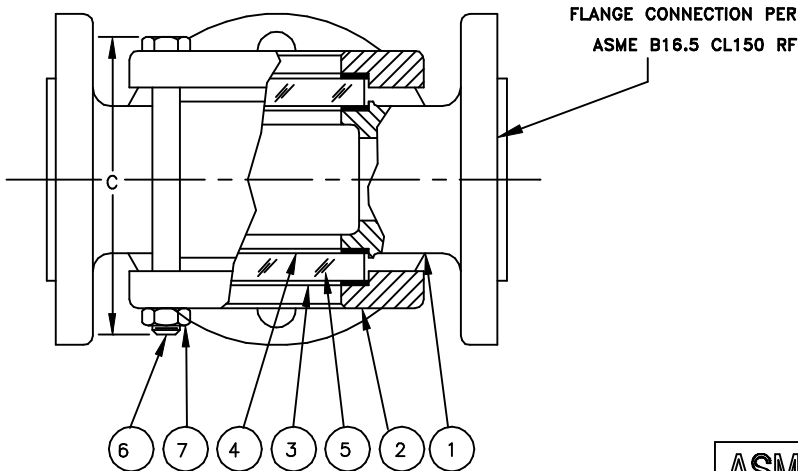


SIGHT FLOW INDICATOR
 STYLE 910-FA & 608-FA (3-WAY)

Section: T400
 Bulletin: T400.08
 Date: 12/01/00
 Supersedes: 11/10/98

150 ASME CLASS MODELS

FILE NO.: T400-08.DWG



THIS DRAWING AND ALL INFORMATION ON IT IS THE PROPERTY OF JACOBY-TARBOX, DIVISION OF THE CLARK-RELIANCE CORPORATION. IT IS CONFIDENTIAL AND IS GIVEN TO YOU FOR A LIMITED PURPOSE AND MUST BE RETURNED UPON REQUEST. NEITHER THIS DRAWING NOR ANY PART OF IT NOR ANY INFORMATION CONCERNING IT MAY BE COPIED, EXHIBITED OR FURNISHED TO OTHERS NOR MAY PHOTOGRAPHS BE TAKEN OF ANY ARTICLE FABRICATED OR ASSEMBLED FROM THIS DRAWING WITHOUT CONSENT OF THE CLARK-RELIANCE CORPORATION.

PARTS LIST

PIECE NO.	NAME OF PART	QUAN.	MATERIAL	COMMENTS
1	BODY	1	SEE BELOW	
2	RETAINER	2	STEEL	
3	CUSHION	2	FIBER	
4	SEAL GASKET	2		
5	WINDOW	2	BOROSILICATE	
6	BOLT	4	STEEL	
7	NUT	4	STEEL	
8	INDICATOR			

ASME CLASS P/T RATINGS

TEMP F	150 CLASS	
	STEEL	316 SS
-20 TO 100	285	275
150	270	260
200	260	240
250	245	230
300	230	215
350	215	205
400	200	195
450	185	180
500	170	170

STANDARD DESIGN MATERIALS:

BODY: ASTM A216-WCB (CARBON STEEL)

ASTM A351-CF8M (316 SS)

RETAINER: ASTM A216-WCB (STEEL) (1/2"-6")
 ASTM A516 GR. 70 (STEEL) (8" & UP)

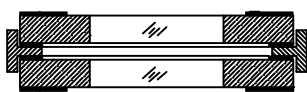
FASTENERS: A354-BD/A194-2H (STEEL)
 INDICATOR: 316 SS FLAP&DRIP, PTFE FLUTTER

304/316 SS TRIM AVAILABLE

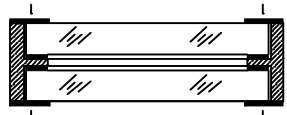
OPTIONAL ALLOYS FURNISHED UPON REQUEST

WINDOW OPTIONS

DUAL UNIGLAS WINDOWS

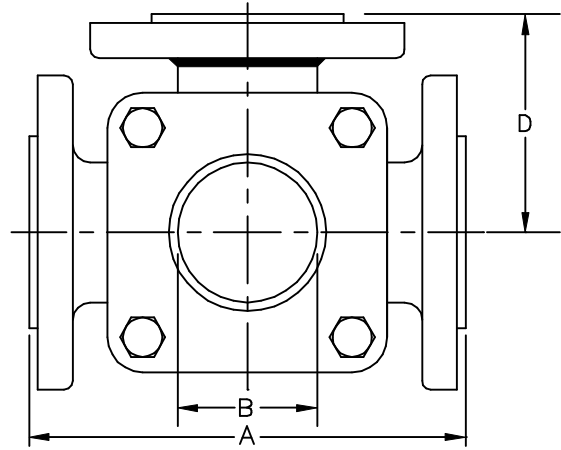
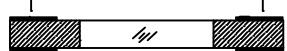


FULL VIEW DUAL WINDOWS



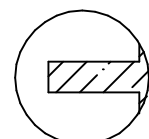
Factory Mutual System Approved

UNIGLAS WINDOW



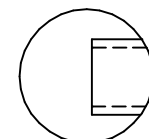
8

INDICATOR OPTIONS



PTFE FLUTTER

STYLE 910-FA-FLTR-3WAY



DRIP TUBE

STYLE 608-FA-3WAY

DIMENSIONS

PIPE SIZE	A		B		C		D		APPROX. WGT.	
	IN.	mm	IN.	mm	IN.	mm	IN.	mm	LBS.	KGS.
1	5-5/8	143	1-1/4	32	4-1/4	108	4.00	102	8	3.6
1-1/2	6-1/2	165	2	51	5-3/4	146	5.00	127	15	6.8
2	7-7/8	200	2	51	6-3/8	162	6.00	152	22	10
2-1/2&3	9-3/8	238	3-3/16	81	7-15/16	202	7.00	178	44	20
4	11	279	4-3/8	111	9-1/2	241	8.00	203	67	30.4
6	14-1/4	362	6	152	12-11/16	322	11.00	279	120	54.4