

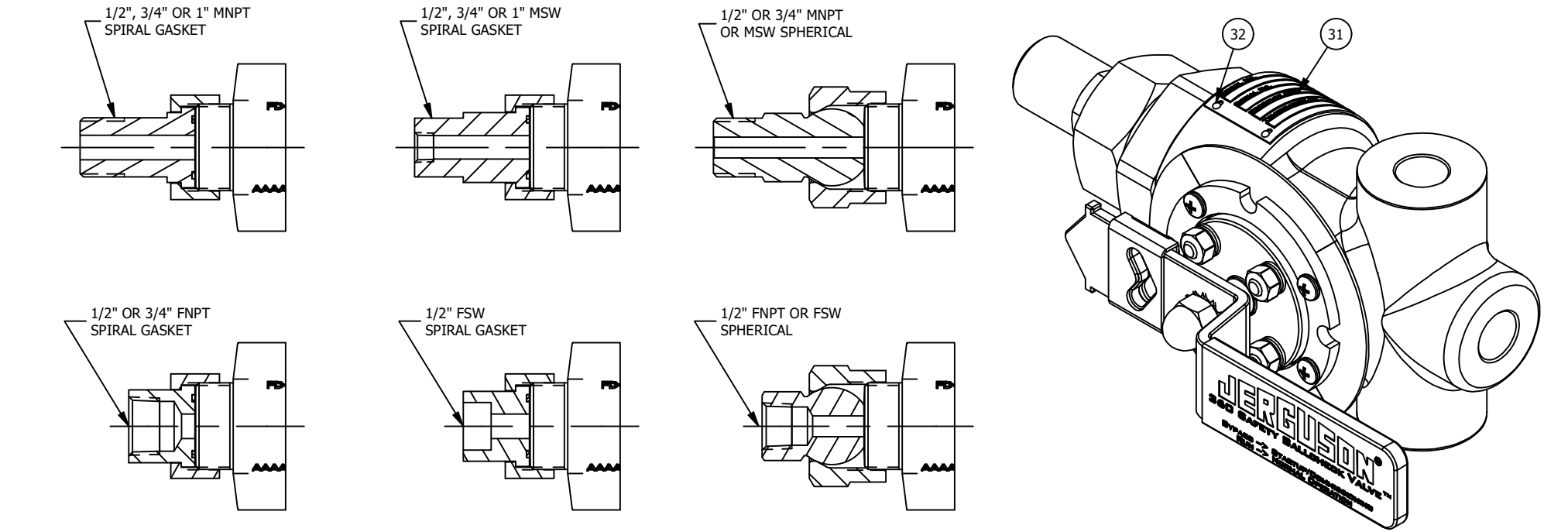
BILL OF MATERIAL					
NO.	NAME OF PART	QTY.	MATERIAL	PART NO.	SPECIFICATION
1	BODY, VALVE BOTTOM	1	CARBON STEEL OR 316/316LSS	PER ORDER	A105 OR A182 Gr.F316/316L
2	BODY, VALVE TOP	1	CARBON STEEL OR 316/316LSS	PER ORDER	A105 OR A182 Gr.F316/316L
3	SEAT, UPSTREAM	1	316/NITRIDE	PER ORDER	UNS 31600
4	BALL, NITRIDE	1	316/NITRIDE	PER ORDER	UNS 31600
5	SEAL, SEAT	1	316/FLEXICARB	PER ORDER	N/A
6	SEAT, DOWNSTREAM	1	316/NITRIDE	PER ORDER	UNS 31600
7	RETAINER, BALL	1	316SS	PER ORDER	A479 OR A240
8	SPRING, DISC	1	INCONEL 718	PER ORDER	B637
9	GASKET, SPIRAL WOUND	1	316/GRAPHITE	PER ORDER	N/A
10	WASHER, THRUST	1	NITRONIC 50	PER ORDER	A276
11	STEM	1	INCONEL 718	PER ORDER	B637
12	PACKING	3	GRAPHITE	PER ORDER	N/A
13	RING, PACKING	1	NITRONIC 60	PER ORDER	A276
14	RING, SNAP	1	INCONEL 750	PER ORDER	B637
15	CHECK, BALL	1	316SS	PER ORDER	A479
16	FOLLOWER, GLAND	1	STAINLESS STEEL	PER ORDER	17-4
17	STUD, GLAND	4	316SS	PER ORDER	A193 Gr.B8M
18	WASHER, SPRING	8	301SS	PER ORDER	UNS 30100
19	NUT, GLAND	4	316SS	PER ORDER	A194 Gr.8M
20	PIN, SPRING (NOT SHOWN)	1	STAINLESS STEEL	PER ORDER	18-8
21	GLAND, INLET	1	LTCS OR 316/316LSS	PER ORDER	A350 Gr.LF2 OR A479
22	NUT, COMPRESSION	1	LTCS OR 316/316LSS	PER ORDER	A350 Gr.LF2 OR A276
23	PLATE, LOCK	1	316SS	V22123	A479 OR A240
24	SCREW, PAN HEAD	4	316SS	X173301	A193 Gr.B8M
25	RING, INDICATOR, POSITION	1	316SS	V22706	A40
26	BUSHING, STEM	1	316/316LSS	V22122	A276 OR A479
27	ASSEMBLY, HANDLE	1	316/316LSS	S25032	A276
28	WASHER	1	STAINLESS STEEL	X174093	400 SERIES
29	NUT, ACORN	1	316SS	X173001 18-8	18-8
30	GRIP, HANDLE	1	VINYL	V22080	N/A
31	TAG, RATING	1	316/316LSS	V22079	A240
32	SCREW, DRIVE	4	STAINLESS STEEL	P1654 P	18-8
33	TAILPIECE, UNION TANK CONN.	1	LTCS OR 316/316LSS	PER ORDER	A350 Gr.LF2 OR A276
34	NUT, UNION TAILPIECE	1	LTCS OR 316/316LSS	PER ORDER	A350 Gr.LF2 OR A276
35	GASKET, UNION	1	304/GRAPHITE	V9864 1	N/A
36	TAG, ISO 15848 (NOT SHOWN)	1	ALUMINUM	V22106	N/A
37	CLIP, TAG (NOT SHOWN)	1	SPRING STEEL	X175102	N/A

UNION TANK CONNECTION ("A" DIMENSION)								
1/2" MNPT (OR MSW)	1/2" FNPT (OR FSW)	1/2" MNPT SPH. (OR MSW)	1/2" FNPT SPH. (OR FSW)	3/4" MNPT	3/4" MSW	3/4" FNPT	3/4" MNPT SPH. (OR MSW)	1" MNPT (OR MSW)
7.312	6.437	7.937	7.062	7.312	8.125	6.437	7.937	7.750
[186]	[163]	[202]	[179]	[186]	[206]	[163]	[202]	[197]

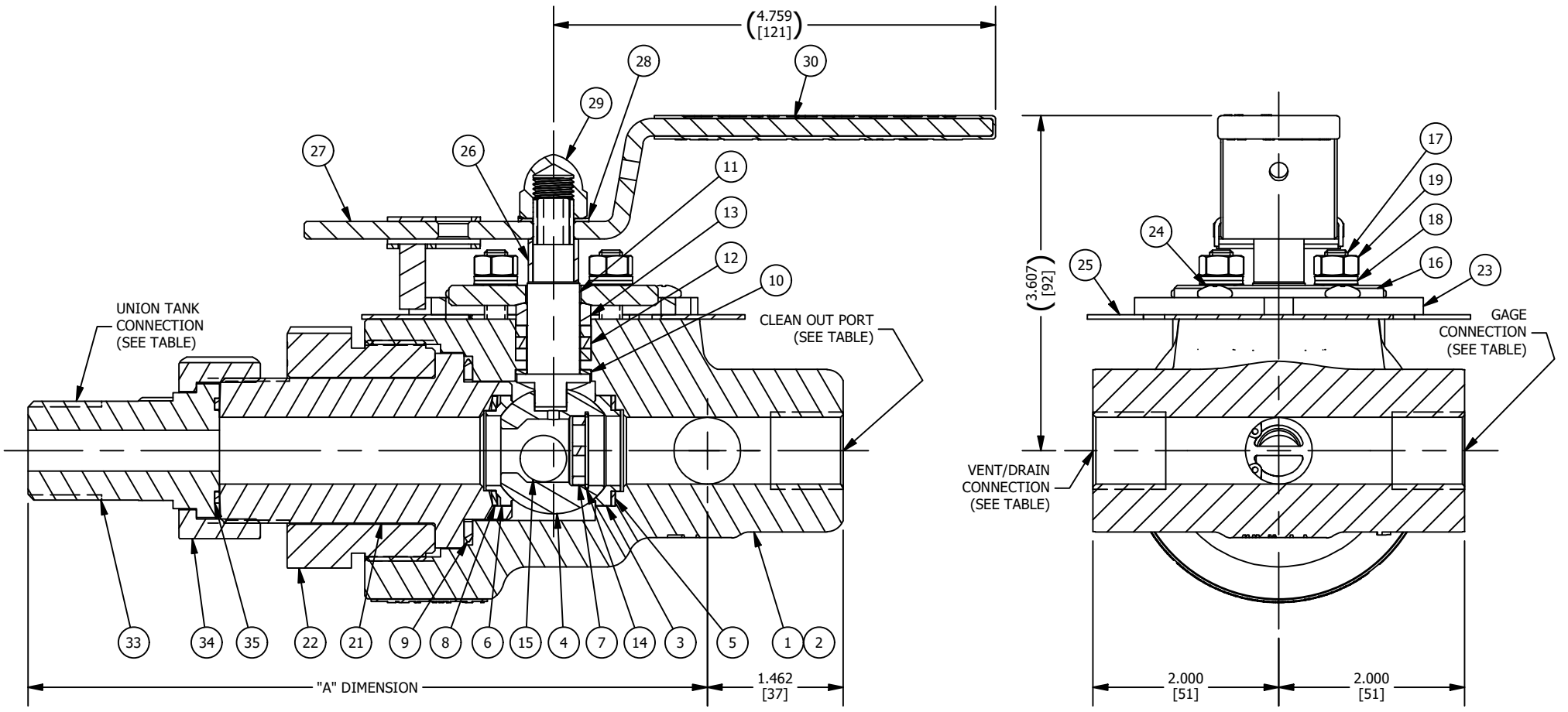
GAGE / VENT/ DRAIN	CLEAN OUT PORT
1/2" FNPT, 3/4" FNPT, FSW	1/2" FNPT OR 3/4" FNPT

- NOTES:
- DIMENSIONS IN INCHES W/ mm EQUIVALENTS IN BRACKETS
  - TOP AND BOTTOM VALVES MIRROR IMAGES OF EACH OTHER (BOTTOM VALVE SHOWN)
  - VALVE RATING - CARBON STEEL:  
2220 PSI @ 100°F, 255 PSI @ 1000°F (MAX)  
(156 KG/CM<sup>2</sup> @ 38°C, 18 KG/CM<sup>2</sup> @ 538°C)
  - VALVE RATING - 316SS:  
2160 PSI @ 100°F, 555 PSI @ 1200°F (MAX)  
(152 KG/CM<sup>2</sup> @ 38°C, 39 KG/CM<sup>2</sup> @ 649°C)
  - SEE TABLES FOR AVAILABLE STANDARD CONNECTIONS
  - REFER TO THE FOLLOWING (FOR):
    - CATALOG BULLETIN J100.56 (ADDITIONAL INFORMATION)
    - IOM BULLETIN J500.56 (INSTRUCTIONS)
  - CONSULT FACTORY FOR ALTERNATE MATERIALS AND CONNECTION OPTIONS
  - ASSEMBLY WEIGHT APPROXIMATELY 12.5 LBS

SPARE PARTS		
PART NO.	DESCRIPTION	SUPPLIED
G294	STEM PACKING	SET CONTAINING THREE PACKING RINGS
S25189	REBUILD KIT	(1) OF EACH: UPSTREAM SEAT, SEAT SEAL, NITRIDE BALL, BALL CHECK, BALL RETAINER, SNAP RING, DOWNSTREAM SEAT, DISC SPRING, INLET GLAND SPIRAL WOUND GASKET, STEM THRUST WASHER, STEM PACKING, SPRING PIN
V9864 1	UNION GASKET	ONE GASKET



TANK CONNECTIONS



MANUFACTURED BY  
**Clark-Reliance®**  
 16633 FOLTZ PARKWAY  
 STRONGSVILLE, OH 44149 USA  
 (440) 572-1500 | www.clarkreliance.com  
 © Clark-Reliance® LLC. All Rights Reserved.

#363 SAFETY BALLCHECK VALVE  
 UNION TANK & NON-UNION GAGE  
 CONNECTIONS  
**JERGUSON®**

DRAWN: SH	DRAWING NO.:	REV.:
CHECKED: RMW	<b>363</b>	<b>4</b>
DATE: 07/18/2017		
CDC: 4 - 22-438 - CMN : 11/02/2022		
MATERIAL: LTCS OR 316/316LSS		
PART NUMBER: <b>363-(PER ORDER)</b>		
<small>TOLERANCES (U.O.N.):          3 Decimal Places: ± .030"          2 Decimal Places: ± .060"          Fractions: ± .030"          Machined Holes: ± .005"          Angles: ± 1°          Finish Marks: ≤ 125 RMS          (See PES-004 for details.)</small>		

THIS DRAWING CONTAINS MATERIAL THAT IS CONFIDENTIAL AND/OR PRIVILEGED FOR THE SOLE USE OF THE INTENDED RECIPIENT. ANY REVIEW, RELIANCE OR DISTRIBUTION BY OTHERS OR FORWARDING WITHOUT EXPRESS PERMISSION IS STRICTLY PROHIBITED.