

MATERIAL: SEE B/M
 DRAWN: MBV CHECKED: DEP
 SCALE: NONE DATE: 9/13/00

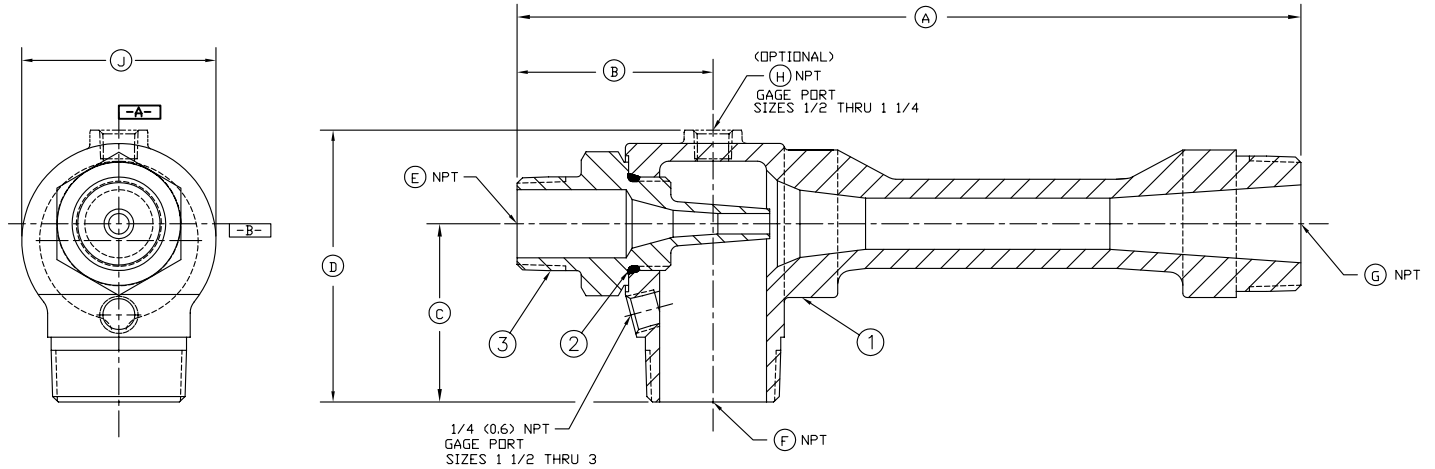


ASSEMBLY EDUCATORS
 STANDARD NPT CONNECTIONS

Section: E400
 Bulletin: E400.1
 Date: 9/13/00
 Supersedes: NEW

FILE NO.: E400-01.DWG

ITEM	DESCRIPTION
1	BODY
2	O-RING, NOZZLE
3	NOZZLE



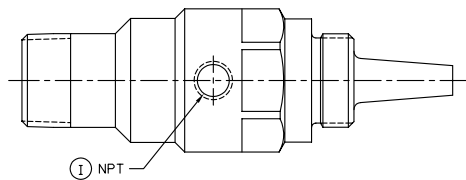
STANDARD CAST UNIT

MODEL	SIZE	INCHES (CM)										NOZZLE GAGE PORT ANGULAR LOCATION		
		A		B		C	D	E	F	G	H		I	J
W/STANDARD NOZZLE	W/GAGE PORT NOZZLE	W/STANDARD NOZZLE	W/GAGE PORT NOZZLE											
SL	1/2	4.500 (11.4)	6.000 (15.2)	1.625 (4.1)	3.125 (7.9)	1.250 (3.2)	2.000 (5.1)	1/4 (0.6)	1/2 (1.3)	1/2 (1.3)	1/8 (0.3)	1/8 (0.3)	1.250 (3.2)	B
ML,HL,SG,HG,MLH,MLE								3/8 (1.0)						
SL	3/4	5.875 (14.9)	7.625 (19.4)	2.000 (5.1)	3.750 (9.5)	1.500 (3.8)	2.375 (6.0)	3/8 (1.0)	3/4 (1.9)	3/4 (1.9)	1/4 (0.6)	1/8 (0.3)	1.500 (3.8)	B
ML,HL,SG,HG,MLH,MLE								1/2 (1.3)						
SL	1	7.125 (18.1)	9.125 (23.2)	2.250 (5.7)	4.250 (10.8)	1.750 (4.4)	2.750 (7.0)	1/2 (1.3)	1 (2.5)	1 (2.5)	1/4 (0.6)	1/8 (0.3) *	1.750 (4.4)	B
ML,HL,SG,HG,MLH,ULJ,MLE								3/4 (1.9)						
SL	1 1/4	9.000 (22.9)	11.250 (28.6)	2.500 (6.4)	4.750 (12.1)	2.250 (5.7)	3.375 (8.6)	3/4 (1.9)	1 1/4 (3.2)	1 1/4 (3.2)	1/4 (0.6)	1/4 (0.6) *	2.250 (5.7)	B
ML,HL,SG,HG,MLH,ULJ,MLE								1 (2.5)						
SL,ML,SG,HG,MLH,MLE	1 1/2	11.000 (27.9)	13.500 (34.3)	2.750 (7.0)	5.250 (13.3)	2.500 (6.4)	3.688 (9.4)	1 (2.5)	1 1/2 (3.8)	1 1/2 (3.8)	-	1/4 (0.6) *	2.750 (7.0)	A
HL,ULJ								1 1/4 (3.2)						
SL,ML,SG,HG,MLH,MLE	2	14.375 (36.5)	17.375 (44.1)	3.125 (7.9)	6.125 (15.6)	3.000 (7.6)	4.438 (11.3)	1 1/4 (3.2)	2 (5.1)	2 (5.1)	-	1/4 (0.6) *	3.562 (9.0)	A
HL,ULJ								1 1/2 (3.8)						
SL,ML,SG,HG,MLH,MLE	2 1/2	18.125 (46.0)	21.625 (54.9)	3.500 (8.9)	7.000 (17.8)	4.125 (10.5)	6.000 (15.2)	1 1/2 (3.8)	2 1/2 (6.4)	2 1/2 (6.4)	-	1/4 (0.6) *	4.750 (12.1)	A
HL,ULJ								2 (5.1)						
SL,ML,HL,SG,HG,MLH,ULJ,MLE	3	23.875 (60.6)	27.875 (70.8)	4.000 (10.2)	8.000 (20.3)	5.000 (12.7)	7.312 (18.6)	2 (5.1)	3 (7.6)	3 (7.6)	-	1/4 (0.6) *	6.062 (15.4)	A

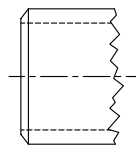
* ULJ IS 1/8

OPTIONAL GAGE PORT NOZZLE

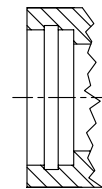
OPTIONAL CONNECTIONS FOR GAGE PORT NOZZLE



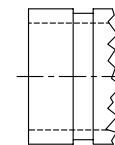
GAGE PORT SHOWN IN LOCATION B



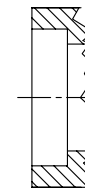
SCH 80 BUTT WELD



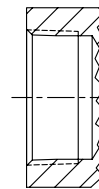
SILBRAZE



VICTAULIC



SOCKET WELD



FEMALE NPT