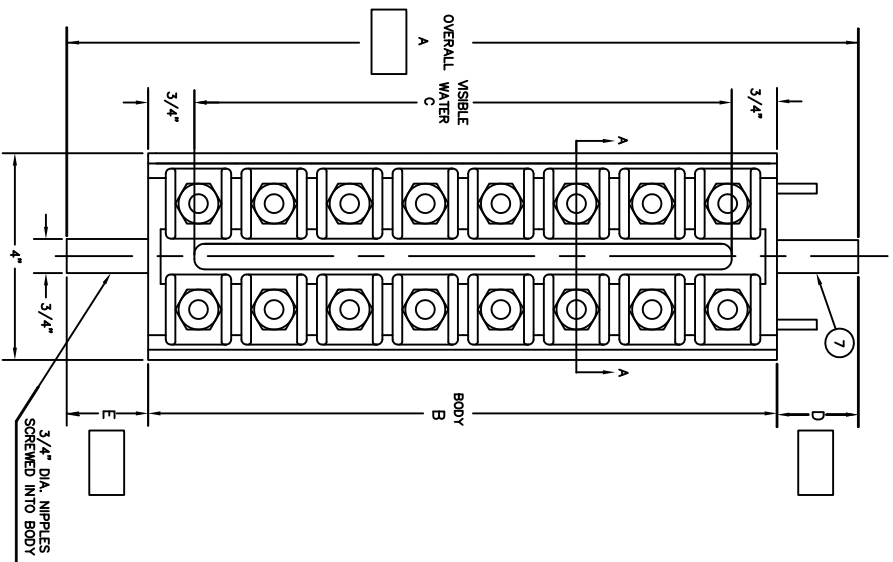
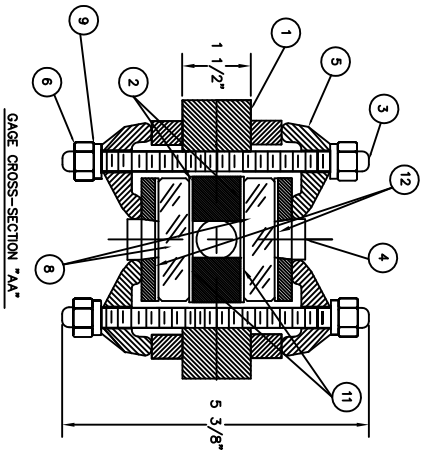
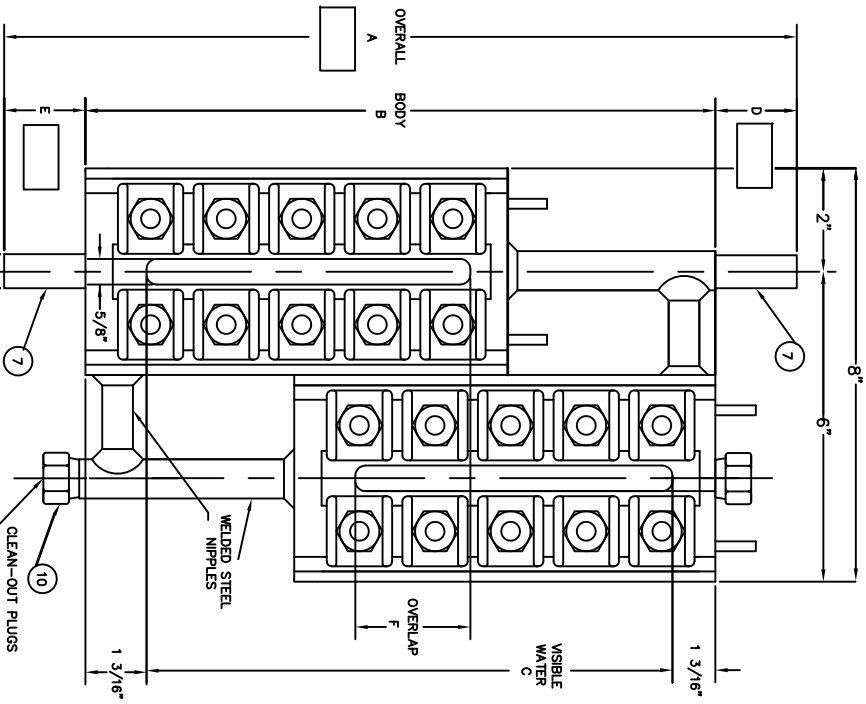


ITEM	QTY	DESCRIPTION	PART NO.	MAT. SPEC.	DWG. NO.
1	1	BODY	FG-1	STEEL	B-11000
2	2	SEALING GASKET	QSG 40	GRAPHITE	B-4667
3	2	STUDS 3/4" X 8 1/2" (FG900-1)	X173710	A103-87	B-4667
4	2	COVER PLATES, 3/8" SLOT	FG-2	STEEL	A-3749
5	2	CLAMPERS, PART. NO. 4882	MG-4	STEEL	A-4882
6	2	HEX. NUTS, 3/4" -20 THRU (MG-7)	X174461	A104-2H	
7	2	NIPPLES	FG-***	304SS	AB-19434
8	2	GLASS-PLAIN FLAT (HIGH PRES)	VG759-4	GLASS	V16786
9	2	WASHERS, 3/8" OD X 3/4" ID X 3/8" (MG-7)	X174212	STEEL	V16786
10	2	HEX. PLUGS, 3/8" DIA	X172050	STEEL	FG-0-3
11	2	LINERS MICA GORE TO GAGE TRICK	FG-0-3	MICA	B-7701
12	2	CUSHION GASKET	V16880*	FIBER	B-7701

TO COMPLETE PART NO.: \* ADD GAGE NO. + ADD LAST NUMERAL OF GAGE NO.  
 \*\*\* ADD NIPPLE LENGTH IN INCHES AND EIGHTHS.

NOTE: UNCONTROLLED COPY LOCATED IN WELD DEPARTMENT



STANDARD SIZES

GAGE NO.	A	B	C	D	E	F	QUAN. NOMIN. SGRS4 STUDS W/G. CTRS
FG986	17 3/8"	15"			3"		24
FG977	19 7/8"	17 1/2"			2 3/4"		28
FG988	22 3/8"	20"			3 1/2"		32
FG999	23 7/8"	21 1/2"			3 1/2"		32

STANDARD SIZES

GAGE NO.	A	B	C	D	E	QUAN. NOMIN. SGRS4 STUDS W/G. CTRS
FG904	8 1/8"	6 5/8"				10
FG905	9 1/4"	7 3/4"				10
FG906	10 1/2"	9"				12
FG907	11 5/8"	10 1/8"				14
FG908	13 1/4"	11 3/4"				16
FG909	14"	12 1/2"				16

WITH SGRS4 SERIES VALVES D=3 1/8", E=2 1/4" (MIN.)  
 WITH 4Q3RS, 4Q4RS SERIES VALVES D=1 3/4", E=1 3/8" (MIN.)

REV	DATE	DESCRIPTION	CHANGE	BY
17	12/14/15	REMOVED REL-90X172500, REPLACED W/ X172030. REMOVED UPPER BODY/LOWER NIPPLE, INCREASED QTY LOWER BODY/UPPER NIPPLE.		FSM
16	2/25/13	ADDED SECOND SHEET WITH WELD DESCRIPTIONS		TJB

REV	DATE	DESCRIPTION	CHANGE	BY
17	12/14/15	REMOVED REL-90X172500, REPLACED W/ X172030. REMOVED UPPER BODY/LOWER NIPPLE, INCREASED QTY LOWER BODY/UPPER NIPPLE.		FSM
16	2/25/13	ADDED SECOND SHEET WITH WELD DESCRIPTIONS		TJB

MANUFACTURED BY



CLARK-RELIANCE®

FG 900 SERIES MICA -

PROTECTED FLAT GLASS GAGE

PART NUMBER: SEE CHART

TOLERANCE CLASS (PER PES-004): B

MATERIAL: SEE CHART

REVISION: 17 PER CDC 15-222/FSM 12/14/2015

DRAWN: CM

CHECKED: RAWW

DATE: 7/3/09

B-7010

17

16633 FOLTZ PARKWAY  
 STRONGSVILLE, OH 44149 USA  
 PH: 440-572-1500  
 WEB: www.clarkreliance.com