



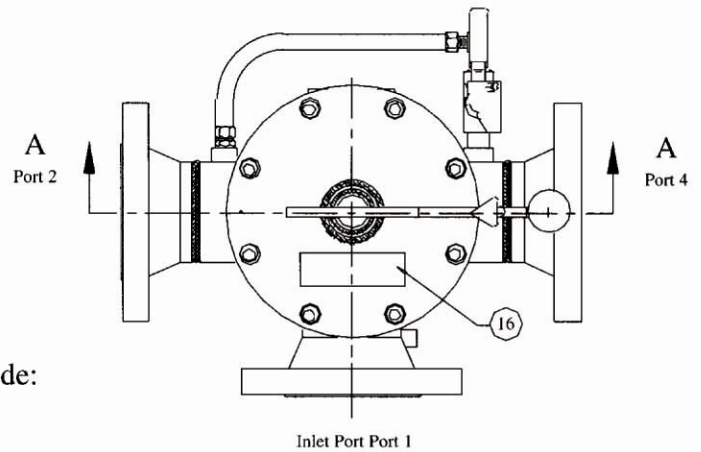
HYDRAULIC COMPANY OF AMERICA

A Product of Clark-Reliance
 (440) 572-1500 sales@clark-reliance.com

6 Way Transfer Valve Maintenance Data

Bill Of Material		
Mark	Description	Material
1	Control Rod	SS
2	Upper Sleeve Assembly	S-BR
3	Lower Sleeve Assembly	S-BR
4	Separator Plate	S
5	Shoe Assembly	*
6	Slide	SS
7	Link	SS
8	Operator Handle Assembly (Ball Handle)	S
9	Roll Pin	SS
10	Bonnet Assembly	SBR
11	Seal Retainer	D
12	Lip Seal - Shaft	*
13	Lip Seal, Separator Plate	*
14	O-Ring, Bonnet	*
15	Screw Down Lever (Tee Handle)	S
16	Instruction Tag	

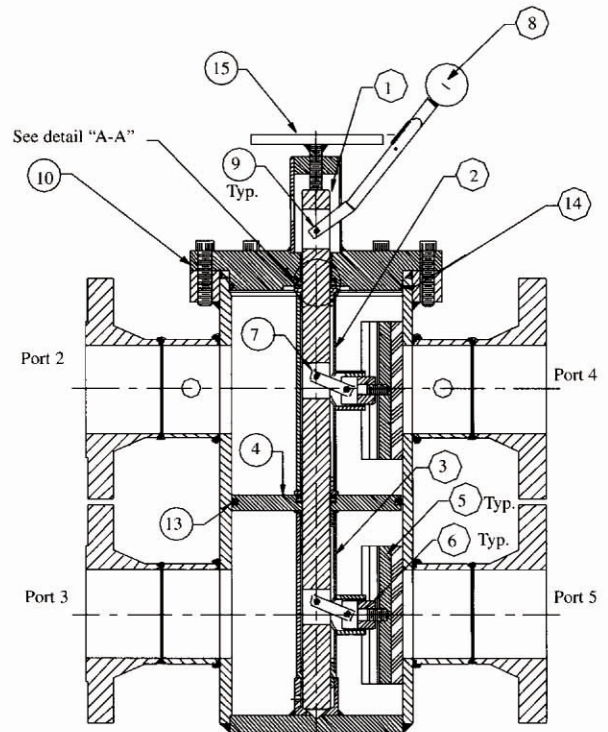
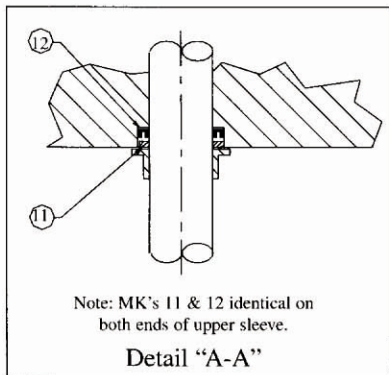
JR-33 Transfer Valve
 6-Way Section View



* Material varies per application based on desired operating temperature/pressure common materials include:

Material
CI - Cast Iron
S - Steel
SS - Stainless Steel
BR - Bronze
V - Viton
D - Delrin
N - Neoprene
B - Nitrile (Buna)

Viton
 Buna (Nitrile)
 Neoprene



Section "A-A"