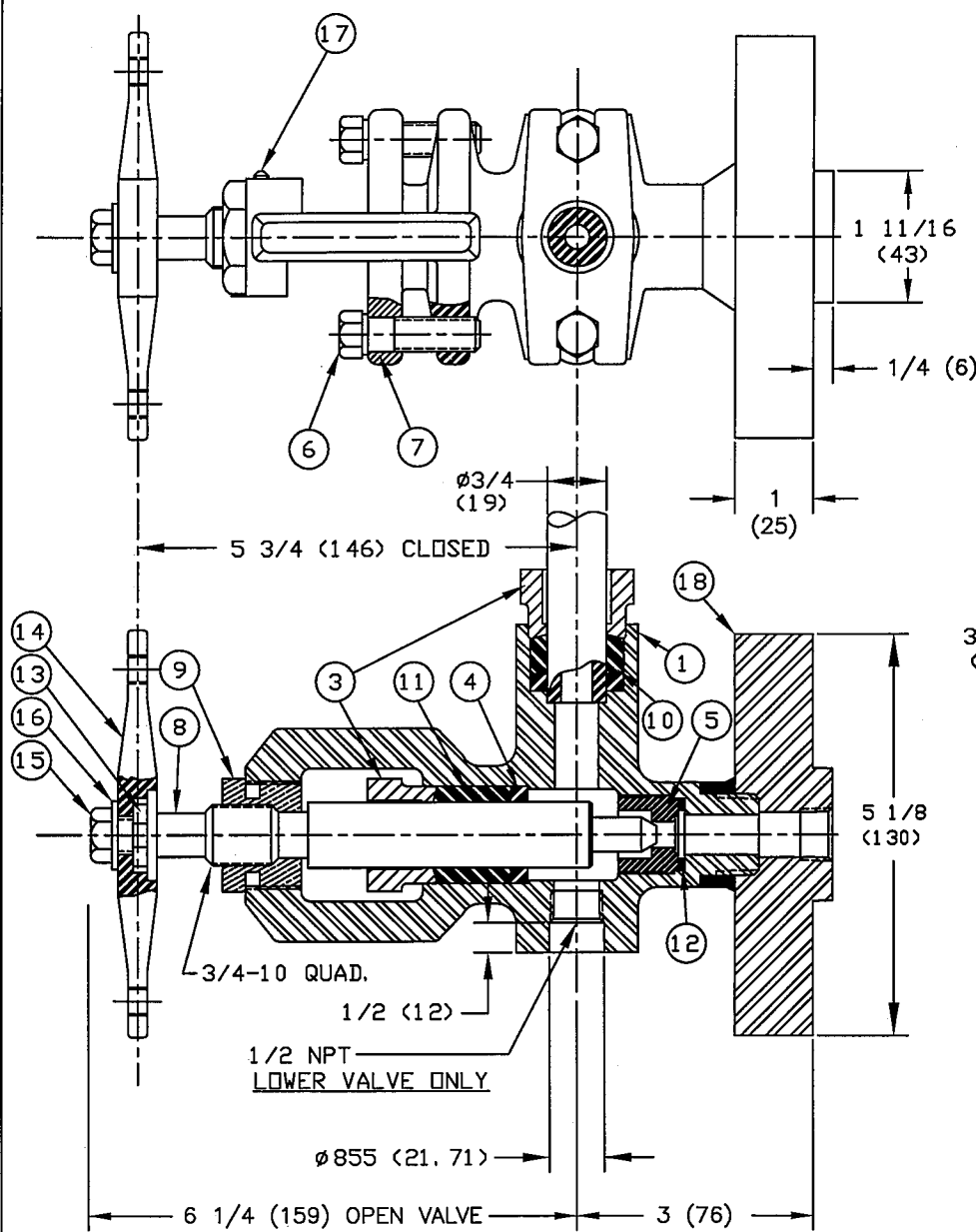
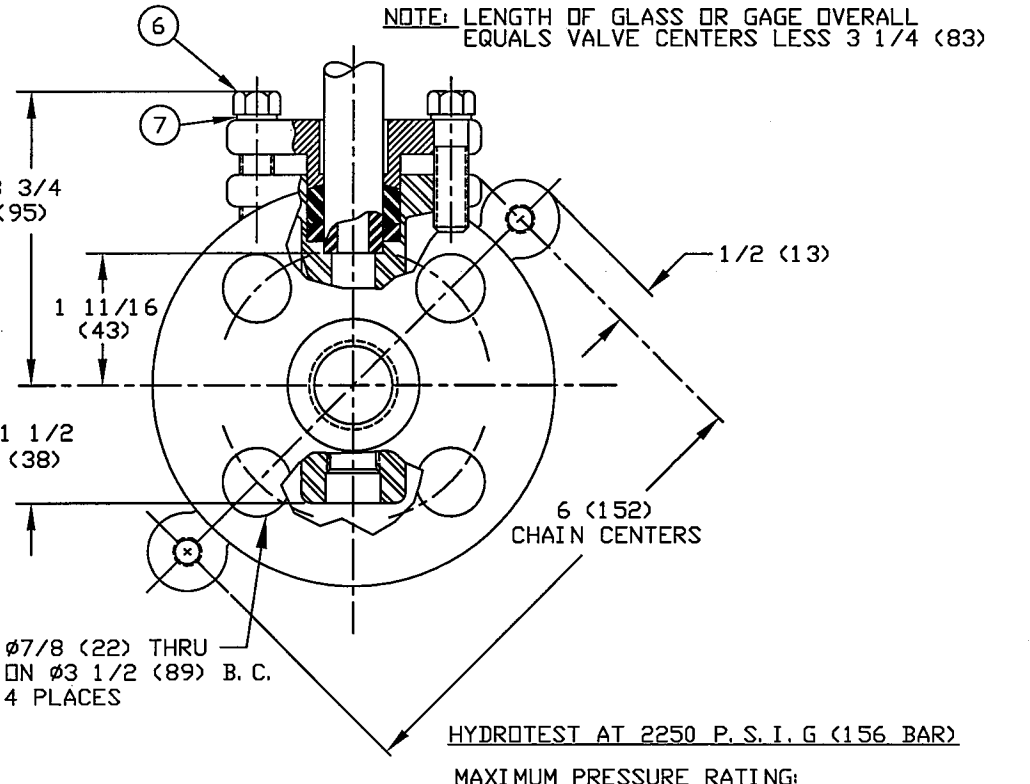


BILL OF MATERIAL - PER SET

ITEM	PART NO.	QUAN.	DESCRIPTION	MATERIAL	DWG NO.
1	SG754-1	1	BODY, LOWER VALVE(FORGED STL.)	ASTM A105	B-9198
2	SG754-1A	1	BODY, UPPER VALVE(FORGED STL.)	ASTM A105	B-9198
3	SG754-2	4	YOKE, PACKING (DUCTILE IRON)	ASTM A395	SG7035-A
4	SG754-3	2	WASHER, PACKING	C 1018	SG7036-A
5	SG454-24	2	SEAT,	420 SS	SG7017-A
6	X172341	8	SCREW, HEX CAP 7/16-14x1 1/2	STEEL	
7	X174212	8	WASHER, PLAIN 15/32 I. D. - 59/64 O. D.	STEEL	
8	SG854-1	2	STEM,	303 SS	A-9196
9	SG854-2	2	BUSHING, STEM	416 SST	A-18717
10	SG854-5	2	CARTRIDGE, NIPPLE PACKING	GRAFDIL	SG7021-A
11	SG854-4	2	CARTRIDGE, STEM PACKING	GRAFDIL	SG7021-A
12	X175500	2	GASKET, VALVE SEAT	MONEL	A-5418
13	BG403RS-1	2	SPROCKET, SINTERED IRON	B202 IIA	A-7255
14	BG403RS-2	2	LEVER, 1 UPPER & 1 LOWER	MALL. IRON	A-7254
15	X172120	2	SCREW, HEX CAP 5/16-18x5/8	STEEL	
16	X174130	2	WASHER, SHAKEPROOF LOCK 5/16	STEEL	
17	X173121	2	SCREW, ALLEN CUP POINT SET 10-24x5/8	STEEL	
18	SG460-2	2	FLANGE, 3/4-900# RAISED FACE	STEEL	A-6555



LOWER VALVE SHOWN



NOTE: LENGTH OF GLASS OR GAGE OVERALL EQUALS VALVE CENTERS LESS 3 1/4 (83)

HYDROTEST AT 2250 P. S. I. G (156 BAR)  
 MAXIMUM PRESSURE RATING:  
 1500 P. S. I. G. (104 BAR) @ 600°F (316°C)  
 DIMENSIONS IN IN. (mm)

UNLESS OTHERWISE NOTED			THE CLARK-RELIANCE CORP.		MATERIAL	
TELEPHONE CO.			STRONGSVILLE, OHIO		DRAWN BY C. CLINE SCALE NONE	
REVISIONS			SG860 FORGED STEEL WATER GAGE VALVE		CHKD. F. SEVERA DATE 6/29/92	
REVISIONS			DRAWING NO. B9201		REV. 9	