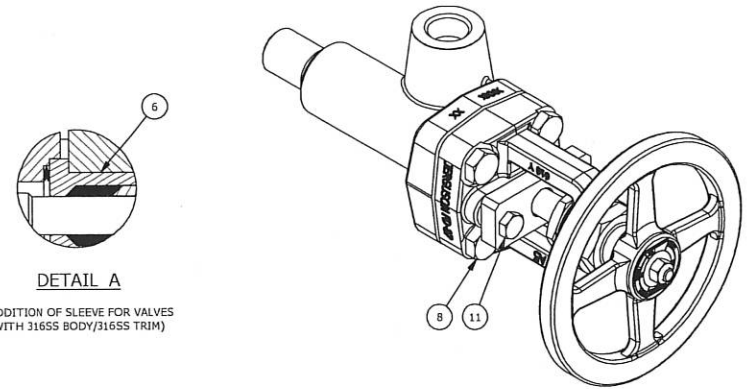
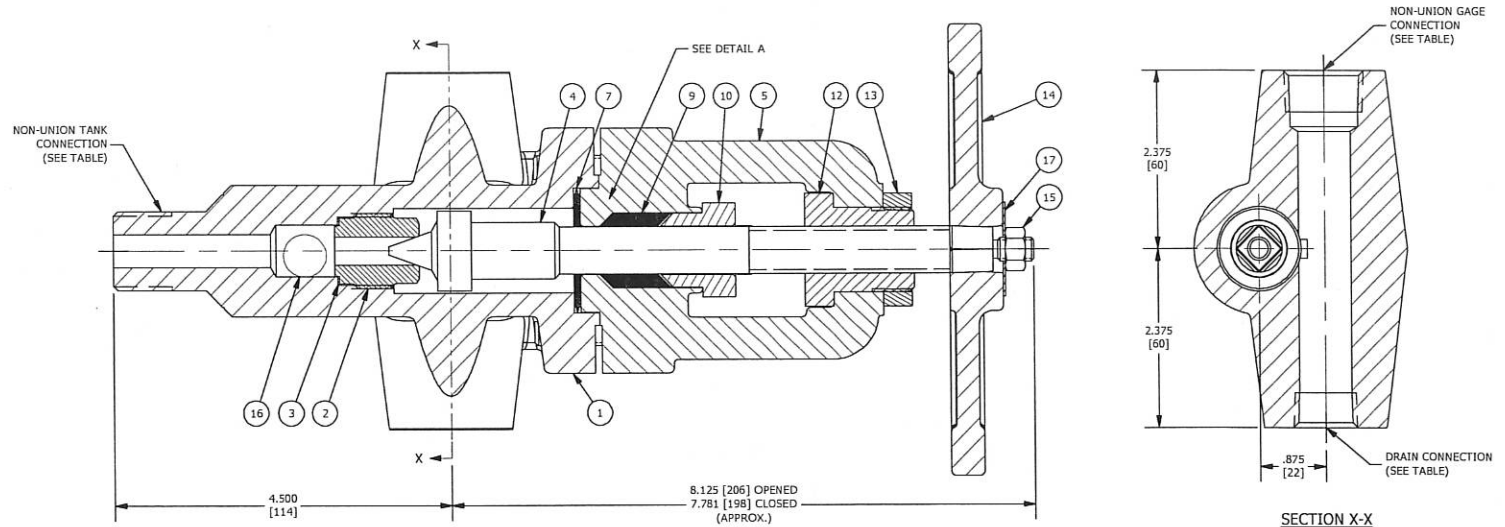


BILL OF MATERIAL (CS BODY/416SS TRIM)					BILL OF MATERIAL (316SS BODY/316SS TRIM)				
NO.	NAME OF PART	QTY.	MATERIAL	SPECIFICATION	NO.	NAME OF PART	QTY.	MATERIAL	SPECIFICATION
1	BODY, BOTTOM VALVE	1	CARBON STEEL	PER ORDER A105	1	BODY, BOTTOM VALVE	1	316/316LSS	PER ORDER A182 GR.F316/316L
2	SEAT	1	416SS	V9806 U3 QQ-S-763	2	SEAT	1	316/316LSS	V9806 T2
3	SEAT GASKET	1	316SS	P8378 T	3	SEAT GASKET	1	316SS	P8378 T
4	STEM, LOOSE KNOB	1	416SS/STELLITE	S10328 3 U	4	STEM, LOOSE KNOB	1	316SS/STELLITE	S10348 3 T
5	YOKE	1	CARBON STEEL	L707 B A105	5	YOKE	1	CARBON STEEL	L316 B A105
6	-----	-	-----	-----	6	SLEEVE	1	316/316LSS	V9830 TL2 A479
7	SPIRAL GASKET	1	316/FLEXICARB	P5643 T	7	SPIRAL GASKET	1	316/FLEXICARB	P5643 T
8	CAP SCREW	4	ALLOY STEEL	P6475 B71 A193 GR.B7	8	CAP SCREW	4	ALLOY STEEL	P6475 B71 A193 GR.B7
9	PACKING	1	GRAFOIL	G266	9	PACKING	1	GRAFOIL	G266
10	PACKING GLAND	1	CARBON STEEL	V18257 9 AL4 A36	10	PACKING GLAND	1	CARBON STEEL	V18257 9 AL4 A36
11	CAP SCREW	2	ALLOY STEEL	P5729 B71 A193 GR.B7	11	CAP SCREW	2	ALLOY STEEL	P5729 B71 A193 GR.B7
12	BUSHING	1	ALUMINUM BRONZE	P8375 F32 QQ-C-465-B	12	BUSHING	1	ALUMINUM BRONZE	P8375 F32 QQ-C-465-B
13	NUT, BUSHING	1	CARBON STEEL	P5665 A6 A108	13	NUT, BUSHING	1	CARBON STEEL	P5665 A6 A108
14	HANDWHEEL	1	ALUMINUM	V9808 E B26	14	HANDWHEEL	1	ALUMINUM	V9808 E B26
15	NUT, STEM	1	CARBON STEEL	V9822 A	15	NUT, STEM	1	CARBON STEEL	V9822 A
16	BALL CHECK (OPTIONAL)	1	440SS	P1 I	16	BALL CHECK (OPTIONAL)	1	316SS	P1 T2 QQ-S-763
17	RATING TAG	1	304SS	V22038 1	17	RATING TAG	1	304SS	V22038 1



- NOTES:
1. DIMENSIONS IN INCHES W/ mm EQUIVALENTS IN BRACKETS
 2. TOP AND BOTTOM VALVES SAME EXCEPT OPPOSITE HANDING (I.E. MIRROR IMAGES) (BOTTOM LEFT HAND VALVE SHOWN)
 3. VALVE RATING - CARBON STEEL:
6000 PSI @ 100°F, 3362 PSI @ 800°F
(42 KG/CM² @ 38°C, 236 KG/CM² @ 427°C)
 - VALVE RATING - 316SS:
6000 PSI @ 100°F, 3760 PSI @ 800°F
(42 KG/CM² @ 38°C, 264 KG/CM² @ 427°C)
 4. BALL CHECK OPTIONAL - FURNISHED ON REQUEST
NOTE: WHEN HORIZONTAL BALL CHECK IS REQUESTED, 3-PIECE LOOSE KNOB STEM IS REPLACED BY 2-PIECE STELLITED STEM S10657 U (416SS) OR S10657 T (316SS) AND SEAT V10273 U3 (416SS) OR V10273 T2 (316SS)
 5. SEE TABLES FOR AVAILABLE STANDARD CONNECTIONS
 6. REFER TO THE FOLLOWING (FOR):
• CATALOG BULLETIN J100.57 (ADDITIONAL INFORMATION)
• IOM BULLETIN J500.10 (INSTRUCTIONS)
 7. VALVE "TRIM" = SEAT, STEM & (OPTIONAL) BALL CHECK
 8. CONSULT FACTORY FOR ALTERNATE MATERIAL OPTIONS (NOT AVAILABLE IN ALL 316SS)

TANK CONNECTION			
1/2" MNPT (OR MSW)	1/2" FNPT (OR FSW)	3/4" MNPT (OR MSW)	3/4" FNPT (OR FSW)
GAGE, VENT / DRAIN CONNECTION			
1/2" OR 3/4" FNPT (OR FSW) ONLY			



REV	DATE	REVISION	BY
1	4/2/2018	UPDATE BOM	JLI

MANUFACTURED BY
Clark-Reliance®
16633 FOLTZ PARKWAY
STRONGSVILLE, OH 44149 USA
(440) 572-1500 | www.clarkreliance.com
© Clark-Reliance® Corporation. All Rights Reserved.

JERGUSON®
#86H OFFSET VALVE (PLAIN-CLOSING)
NON-UNION TANK & GAGE CONNECTIONS

DRAWN: DDenk
CHECKED: MK
DATE: 7/8/2013
REVISION: 1
DRAWING NO.: **86H**
REV.: **1**