

THIS DRAWING CONTAINS MATERIAL THAT IS CONFIDENTIAL AND/OR PRIVILEGED FOR THE SOLE USE OF THE INTENDED RECIPIENT. ANY REVIEW, RELIANCE OR DISTRIBUTION BY OTHERS OR FORWARDING WITHOUT EXPRESS PERMISSION IS STRICTLY PROHIBITED.



**JACOBY-TARBOX®**

A Product of the Clark-Reliance Corporation

16633 FOLTZ PARKWAY  
STRONGSVILLE, OH 44149 USA  
(440) 572-1500 | www.clarkreliance.com  
© Clark-Reliance® LLC. All Rights Reserved.

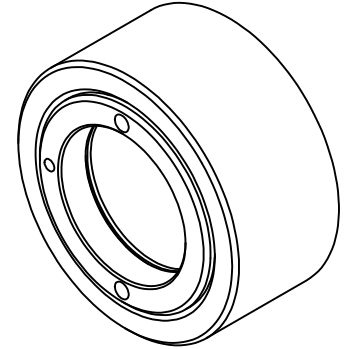
**SIGHT FLOW INDICATOR  
STYLE 5500**

SECTION: **T400**  
BULLETIN: **T400.60**  
DATE: **05/18/2022**  
SUPERSEDES: **10/25/2018**  
FILE NO.: **T400-60**  
DRAWN: **MWS** | CHECKED: **DEP**  
SCALE: **NONE**

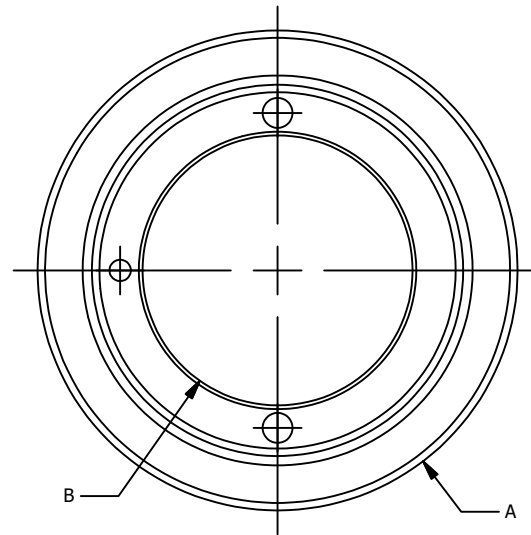
**PARTS LIST**

PIECE NO.	PART NAME	QTY.	STANDARD DESIGN MATERIALS
1	BODY (SEE NOTE (1))	1	ASTM A576 (CARBON STEEL) ASTM A276 (316L SS)
2	RETAINER (2)	1	C360 (BRASS)
3	WINDOW (3)	1	TEMPERED BOROSILICATE
4	SEAL GASKET (4)	1	NEOPRENE
5	CUSHION GASKET	1	FIBER

- (1) ADDITIONAL ALLOYS AVAILABLE PER REQUEST
  - (2) 316L SS AVAILABLE PER REQUEST
  - (3) ADDITIONAL WINDOW OPTIONS AVAILABLE
  - (4) COMMON OPTIONAL SEAL MATERIALS AVAILABLE
  - (5) COMMON OPTIONAL SEAL MATERIALS AVAILABLE
- |                               |                                   |                                |
|-------------------------------|-----------------------------------|--------------------------------|
| <input type="checkbox"/> PTFE | <input type="checkbox"/> GRAPHITE | <input type="checkbox"/> FIBER |
|-------------------------------|-----------------------------------|--------------------------------|



PRESSURE / TEMP RATINGS		
PSIG / °F (BAR / °C)		
TEMP °F (°C)	PRESSURE	
	STEEL	316L SS
-20 TO 100	150 (10.3)	150 (10.3)
150 (66)	150 (10.3)	150 (10.3)
200 (93)	150 (10.3)	150 (10.3)
250 (121)	150 (10.3)	150 (10.3)
300 (149)	150 (10.3)	150 (10.3)
350 (177)	150 (10.3)	150 (10.3)
400 (204)	150 (10.3)	150 (10.3)
450 (232)	150 (10.3)	150 (10.3)
500 (260)	150 (10.3)	150 (10.3)



DIMENSIONS									
SIZE	A		B		C		APPROX. WEIGHT		
	IN	mm	IN	mm	IN	mm	LBS	KGS	
#1	1.50	38	0.63	16	0.81	21	0.50	0.23	
#2	1.75	45	0.88	22	0.81	21	0.50	0.23	
#3	2.00	51	1.13	29	0.94	24	0.75	0.34	
#4	2.25	57	1.25	32	1.00	25	0.80	0.36	
#5	2.50	64	1.50	38	1.31	33	1.50	0.68	
#6	3.50	89	2.25	57	1.44	37	2.50	1.13	
#7	4.25	108	2.75	70	1.56	40	3.75	1.70	

