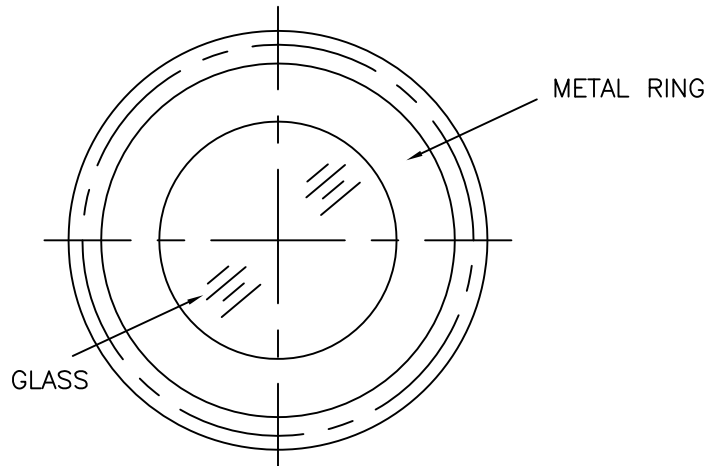
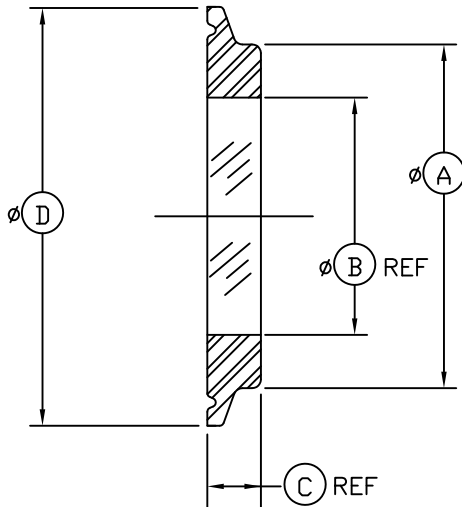


THIS DRAWING AND ALL INFORMATION ON IT IS THE PROPERTY OF JACOBY-TARBOX, DIVISION OF THE CLARK-RELIANCE CORPORATION. IT IS CONFIDENTIAL AND IS GIVEN TO YOU FOR A LIMITED PURPOSE AND MUST BE RETURNED UPON REQUEST. NEITHER THIS DRAWING NOR ANY PART OF IT NOR ANY INFORMATION CONCERNING IT MAY BE COPIED, EXHIBITED OR FURNISHED TO OTHERS NOR MAY PHOTOGRAPHS BE TAKEN OF ANY ARTICLE FABRICATED OR ASSEMBLED FROM THIS DRAWING WITHOUT CONSENT OF THE CLARK-RELIANCE CORPORATION.



SPECIFICATIONS

MATERIALS:

DIN 7080 BORSILICATE GLASS FUSED TO
DUPLEX STAINLESS STEEL (UNS 31803) RING

OPTION: HASTELLOY® C22 - 572°F (300°C)

SURFACE FINISH:

10 μin Ra (0.25 μm Ra)

OPTION: ELECTROPOLISH

PRESSURE/TEMP. RATINGS

SIZE* TUBE OD	MAX PRESSURE AT	
	536°F	280°C
	PSIG	BAR
1/2" & 3/4"	362	25
1" & 1-1/2"	232	16
2"	232	16
2-1/2"	232	16
3"	150	10.3
4"	150	10.3
6"	90	6.2
8"	90	6.2
10"	90	6.2
12"	90	6.2

NOTE: HYGIENIC CLAMP DIMENSION IN ACCORDANCE WITH ASME BPE

SIZE* TUBE OD	A		B		C		D	
	IN	mm	IN	mm	IN	mm	IN	mm
1/2 & 3/4	0.71	18	.39	10	.39	10	0.98	25
1 & 1 1/2	1.61	41	.98	25	.39	10	1.99	51
2	2.05	52	1.18	30	.39	10	2.52	64
2 1/2	2.72	69	1.38	35	.39	10	3.05	78
3	2.99	76	1.57	40	.39	10	3.58	91
4	4.02	101	2.17	55	.47	12	4.69	119
6	5.98	152	2.95	75	.63	16	6.57	167
8	7.80	198	3.94	100	.71	18	8.56	218
10	9.65	245	4.72	120	.79	20	10.55	268
12	11.81	300	5.51	140	.87	22	12.56	319

* STANDARD TUBE O.D.'S IN INCHES