

MATERIAL: SEE B/M  
 DRAWN: MBV CHECKED: MK  
 SCALE: NONE DATE: 10/17/19

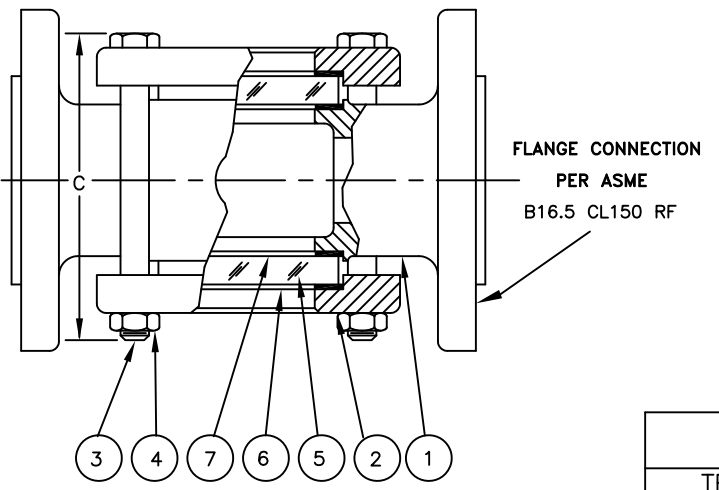


SIGHT FLOW INDICATOR  
 STYLE 910-FA(NF) & 608-FA W/COUPLING

Section: T400  
 Bulletin: T400.11  
 Date: 5/26/20  
 Supersedes: 10/17/19

150 ASME CLASS MODELS

FILE NO.: T400-11.DWG



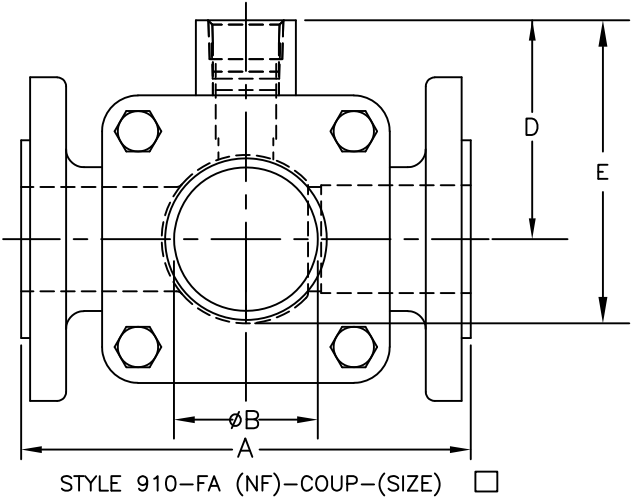
PARTS LIST			
PIECE NO.	PART NAME	QTY.	STANDARD DESIGN MATERIALS
1	BODY (SEE NOTE (1 & 2))	1	ASTM A216-WCB (CARBON STEEL) ASTM A351-CF8M (316 SS)
2	RETAINER (2)	2	ASTM A216-WCB (CARBON STEEL) (1/2" - 6") ASTM A516 GR.70 (CARBON STEEL) (8")
3	BOLT (2)	4	ASTM A354-BD (ALLOY STEEL)
4	NUT (2)	4	ASTM A194-2H (ALLOY STEEL)
5	WINDOW (3)	2	TEMPERED BOROSILICATE
6	SEAL GASKET (4)	2	NEOPRENE
7	CUSHION GASKET	2	FIBER
8	INDICATOR	1	DRIP TUBE (316SS)

NOTES (REFERENCE PARTS LIST)

- STANDARD FLANGES FACED & DRILLED TO ASME B16.5 CLASS 150 RF DIMENSIONS
- ADDITIONAL ALLOYS AVAILABLE PER REQUEST
- a. OPTIONAL MATERIALS AVAILABLE PER PROCESS CONDITIONS  
 b. ADDITIONAL WINDOW OPTIONS AVAILABLE SEE SIDE SECTION FOR DETAILS
- COMMON OPTIONAL SEAL MATERIALS AVAILABLE
 

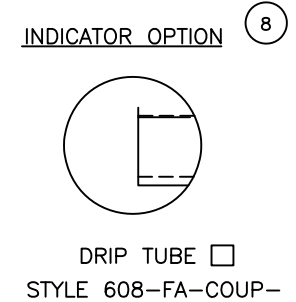
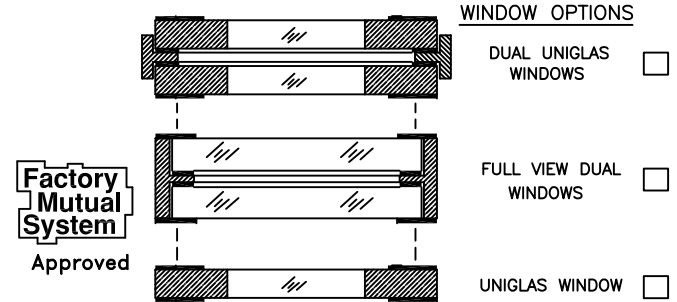
PTFE	GRAPHITE	FIBER
------	----------	-------

DESIGNED IN ACCORDANCE WITH ASME B31.1 & B31.3 FOR PRESSURE VERSUS TEMPERATURE RATINGS USING ONLY LISTED METALS IN FABRICATION



ASME CLASS P/T RATINGS					
TEMP F	150 CLASS		TEMP F	150 CLASS	
	STEEL	316 SS		STEEL	316 SS
-20 TO 100	285	275	350	215	205
150	270	260	400	200	195
200	260	240	450	185	180
250	245	230	500	170	170
300	230	215			

THIS DRAWING AND ALL INFORMATION ON IT IS THE PROPERTY OF JACOBY-TARBOX, DIVISION OF THE CLARK-RELIANCE CORPORATION. IT IS CONFIDENTIAL AND IS GIVEN TO YOU FOR A LIMITED PURPOSE AND MUST BE RETURNED UPON REQUEST. NEITHER THIS DRAWING NOR ANY PART OF IT NOR ANY INFORMATION CONCERNING IT MAY BE COPIED, EXHIBITED OR FURNISHED TO OTHERS NOR MAY PHOTOGRAPHS BE TAKEN OF ANY ARTICLE FABRICATED OR ASSEMBLED FROM THIS DRAWING WITHOUT CONSENT OF THE CLARK-RELIANCE CORPORATION.



DIMENSIONS

PIPE SIZE	A		B		C		"D & E" BY COUPLING SIZE												APPROX. WT.	
							1/2" COUPLING				3/4" COUPLING				1" COUPLING					
	IN.	MM	IN.	MM	IN.	MM	D		E		D		E		D		E		LBS.	KGS.
1/2&3/4	4-5/8	117.5	1-1/8	28.6	4	102.0	1.82	46.2	2.72	69.1	1.75	44.5	2.65	67.3	---	---	---	---	6	2.7
1	5-5/8	142.9	1-1/4	31.8	4-1/2	114.3	1.89	48.0	2.92	74.2	1.81	46.0	2.84	72.1	2.22	56.4	3.25	82.6	8	3.6
1-1/2	6-1/2	165.1	2	50.8	5-7/8	149.2	2.55	64.8	4.08	103.6	2.43	61.7	3.96	100.6	2.61	66.3	4.14	105.2	15	6.8
2	7-7/8	200.0	2	50.8	6-1/4	158.8	2.63	66.8	4.31	109.5	3.75	95.3	5.44	138.2	3.75	92.3	5.44	138.2	22	10
2-1/2&3	9-3/8	238.1	3-3/16	81.0	8-1/2	216.0	3.53	89.7	6.00	152.4	3.47	88.1	5.94	150.9	3.47	88.1	5.94	150.9	44	20
4	11	279.4	4-3/8	111.1	10-1/2	266.7	4.06	103.1	7.19	182.6	5.25	133.4	8.38	212.9	4.28	108.7	7.41	188.2	67	30.4
6	14-1/4	362.0	6-7/8	174.6	14-3/4	374.7	5.06	128.5	9.50	241.3	5.44	138.2	9.88	251.0	5.69	144.5	10.13	257.3	155	70.3
8	16-1/8	410.0	8-1/4	209.6	17-1/2	444.5	6.38	162.1	11.38	289.1	6.38	162.1	11.38	289.1	6.56	166.6	11.57	293.9	230	104.3