

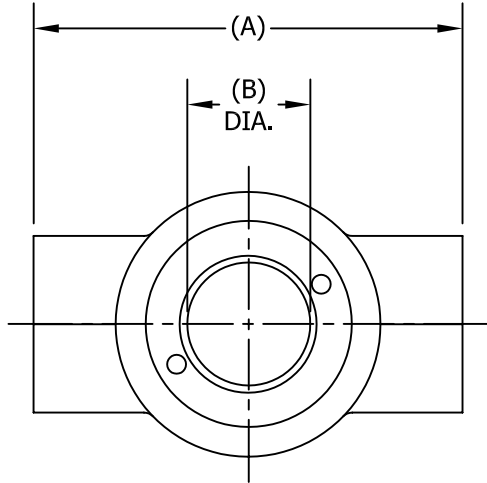
THIS DRAWING AND ALL INFORMATION ON IT IS THE PROPERTY OF THE CLARK-RELIANCE CORPORATION. IT IS CONFIDENTIAL AND IS GIVEN TO YOU FOR A LIMITED PURPOSE AND MUST BE RETURNED UPON REQUEST. NEITHER THIS DRAWING NOR ANY PART OF IT NOR ANY INFORMATION CONCERNING IT MAY BE COPIED, EXHIBITED OR FURNISHED TO OTHERS NOR MAY PHOTOGRAPHS BE TAKEN OF ANY ARTICLE FABRICATED OR ASSEMBLED FROM THIS DRAWING WITHOUT CONSENT OF THE CLARK-RELIANCE CORPORATION.



JACOBY-TARBOX[®]
 A Product of the Clark-Reliance Corporation
 16633 FOLTZ PARKWAY
 STRONGSVILLE, OH 44149 USA
 PH: +1 440-572-1500
 www.clark-reliance.com

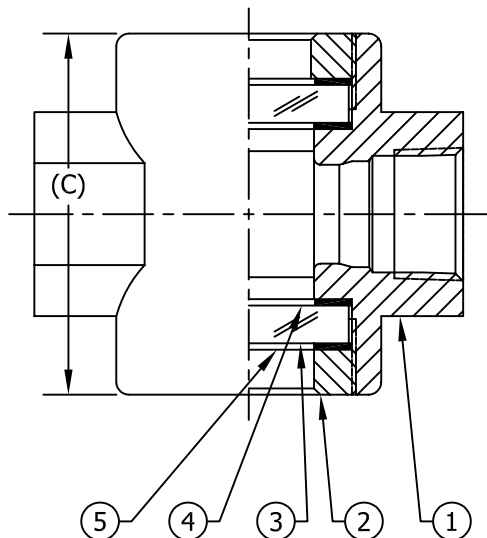
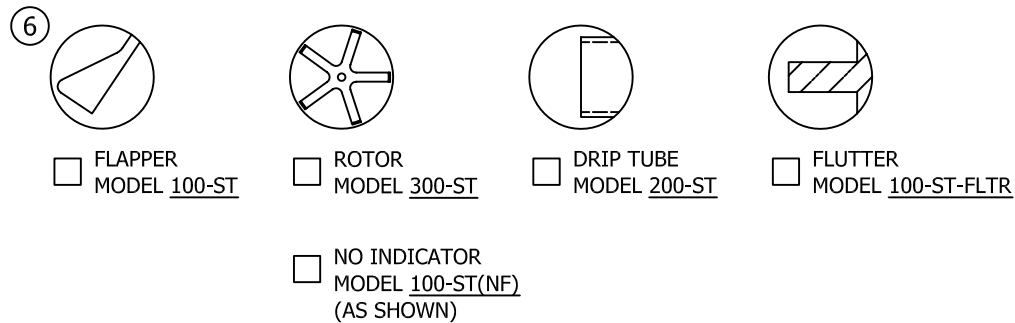
**SIGHT FLOW INDICATOR
 MODEL 100-ST, 200-ST, 300-ST
 150 PSIG NOMINAL SERVICE**

SECTION: T400
 BULLETIN: T400.15
 DATE: 03/01/11
 SUPERSEDES: 09/28/04
 FILE NO.: T400-15.DWG
 DRAWN: FWK | CHECKED: DEP
 SCALE: NONE



PARTS LIST				
PIECE NO.	PART NAME	QTY.	STANDARD DESIGN MATERIALS	
1	BODY (SEE NOTE (1))	1	ASTM A216-WCB (CARBON STEEL)	
			ASTM A351-CF8M (316 SS)	
			ASTM B62 (BRONZE)	
2	RETAINER (1)	2	ASTM B16 (BRASS)	
			ASTM A479 (316L SS)	
3	WINDOW (2)	2	ANNEALED BOROSILICATE	
4	SEAL GASKET (3)	2	NEOPRENE	
5	CUSHION GASKET	2	FIBER	
6	INDICATOR	1	FLAPPER (316SS)	DRIP TUBE (316SS)
			ROTOR (PTFE)	FLUTTER (PTFE)

NOTES (REFERENCE PARTS LIST)			
(1) ADDITIONAL ALLOYS AVAILABLE PER REQUEST			
(2) a. OPTIONAL MATERIALS AVAILABLE PER PROCESS CONDITIONS			
b. ADDITIONAL WINDOW OPTIONS AVAILABLE SEE BULLETIN (T400.16) FOR DETAILS			
(3) COMMON OPTIONAL SEAL MATERIALS AVAILABLE			
<input type="checkbox"/>	PTFE	<input type="checkbox"/>	GRAPHITE
<input type="checkbox"/>	FIBER	<input type="checkbox"/>	



PRESSURE / TEMP RATINGS PSIG / °F (BAR / °C)			
TEMP	PRESSURE		
°F (°C)	STEEL	316 SS	BRONZE
-20 TO 400 (-29 TO 204)	150 (10.34)	150 (10.34)	150 (10.34)
401 TO 450 (205 TO 232)			UNRATED

FOR ASME CLASS 150 SERVICE, AND FOR TEMPERATURES OVER 450°F (232°C), SEE BULLETIN (T400.16)

DIMENSIONS								
NPT SIZE	A		B		C		APPROX. WEIGHT	
	IN	mm	IN	mm	IN	mm	LBS	KGS
1/4	3.00	76	0.84	21	2.00	51	1.50	0.70
3/8	3.00	76	0.84	21	2.00	51	1.50	0.70
1/2	3.75	95	1.25	32	2.75	70	3.00	1.40
3/4	3.75	95	1.25	32	2.75	70	3.00	1.40
1	4.25	108	1.25	32	3.50	89	4.00	1.80
1 1/4	5.50	140	2.00	51	4.75	114	9.00	4.00
1 1/2	5.50	140	2.00	51	4.75	114	9.00	4.00
2	6.25	159	2.00	51	5.00	127	11.00	5.10