

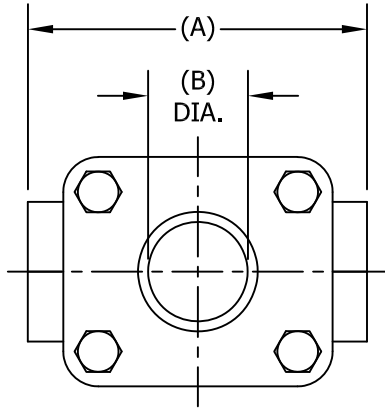
THIS DRAWING AND ALL INFORMATION ON IT IS THE PROPERTY OF THE CLARK-RELIANCE CORPORATION. IT IS CONFIDENTIAL AND IS GIVEN TO YOU FOR A LIMITED PURPOSE AND MUST BE RETURNED UPON REQUEST. NEITHER THIS DRAWING NOR ANY PART OF IT NOR ANY INFORMATION CONCERNING IT MAY BE COPIED, EXHIBITED OR FURNISHED TO OTHERS NOR MAY PHOTOGRAPHS BE TAKEN OF ANY ARTICLE FABRICATED OR ASSEMBLED FROM THIS DRAWING WITHOUT CONSENT OF THE CLARK-RELIANCE CORPORATION.



**JACOBY-TARBOX**<sup>®</sup>  
 A Product of the Clark-Reliance Corporation  
 16633 FOLTZ PARKWAY  
 STRONGSVILLE, OH 44149 USA  
 PH: +1 440-572-1500  
 www.clark-reliance.com

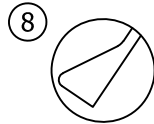
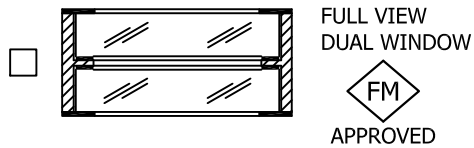
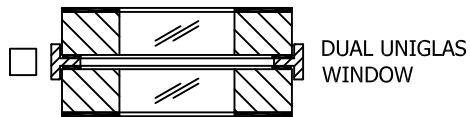
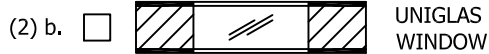
**SIGHT FLOW INDICATOR  
 MODEL S-100HPA-CL15 &  
 S-200HPA-CL15 & S-300HPA-CL15  
 FOR ASME CL1500 SERVICE**

SECTION: T400	
BULLETIN: T400.120	
DATE: 10/13/2020	
SUPERSEDES: 08/02/2017	
FILE NO.: T400-120.DWG	
DRAWN: MWS	CHECKED: DEP
SCALE: NONE	

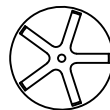


PARTS LIST			
PIECE NO.	PART NAME	QTY.	STANDARD DESIGN MATERIALS
1	BODY (SEE NOTE (1))	1	ASTM A216-WCB (CARBON STEEL) ASTM A351-CF8M (316 SS)
2	RETAINER (1)	2	ASTM A216-WCB (CARBON STEEL) ASTM A516 GR.70 (CARBON STEEL)
3	BOLT (1)	4	ASTM A354-BD (ALLOY STEEL)
4	NUT (1)	4	ASTM A194-2H (ALLOY STEEL)
5	WINDOW (2)	2	TEMPERED BOROSILICATE
6	SEAL GASKET (3)	2	FIBER
7	SHIM GASKET	6	FIBER
8	INDICATOR	1	DRIP TUBE (316SS)   FLUTTER (PTFE) FLAPPER (316SS)   ROTOR (PTFE)   GAS INDICATOR (PTFE)
9	WINDOW HOLDER(1)	2	(CARBON STEEL) (316 SS)

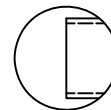
NOTES (REFERENCE PARTS LIST)	
(1)	ADDITIONAL ALLOYS AVAILABLE PER REQUEST
(2) a.	OPTIONAL MATERIALS AVAILABLE PER PROCESS CONDITIONS
b.	ADDITIONAL WINDOW OPTIONS AVAILABLE SEE SIDE SECTION FOR DETAILS
(3)	COMMON OPTIONAL SEAL MATERIALS AVAILABLE
	<input type="checkbox"/> PTFE <input type="checkbox"/> GRAPHITE
DESIGNED IN ACCORDANCE WITH ASME B31.1 & B31.3 FOR PRESSURE VERSUS TEMPERATURE RATINGS USING ONLY LISTED METALS IN FABRICATION	



FLAPPER  
S-100HPA-CL15



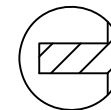
ROTOR  
S-300HPA-CL15



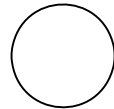
DRIP TUBE  
S-200HPA-CL15



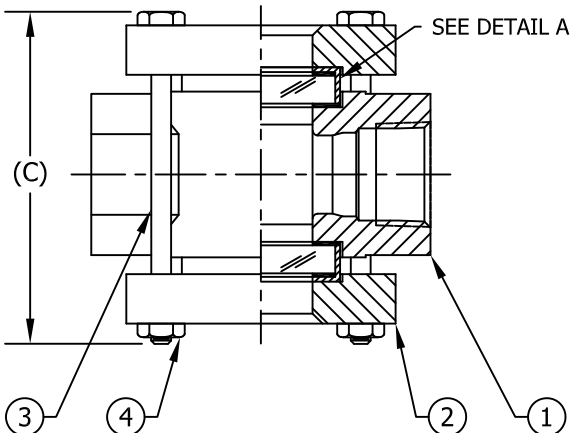
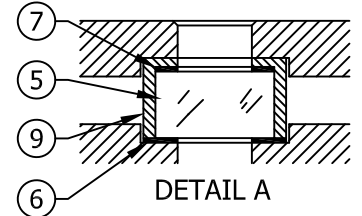
GAS INDICATOR  
S-100HPA-CL15-GI



FLUTTER  
S-100HPA-CL15-FLTR



NO INDICATOR  
S-100HPA-CL15-(NF)



ASME PRESSURE / TEMP RATINGS		
PSIG / °F (BAR / °C)		
TEMP	PRESSURE	
	STEEL	316 SS
°F (°C)		
-20 TO 100	3705 (255.5)	3600 (248.2)
150 (66)	3550 (244.8)	3348 (230.8)
200 (93)	3395 (234.1)	3095 (213.9)
250 (121)	3333 (229.8)	2945 (203.1)
300 (149)	3270 (225.5)	2795 (192.7)
350 (177)	3220 (222.0)	2683 (185.0)
400 (204)	3170 (218.6)	2570 (177.2)
450 (232)	3093 (213.3)	2480 (171.0)
500 (260)	3015 (207.9)	2390 (164.8)

FOR TEMPERATURES ABOVE 500°F (260°C) REFER TO ASME B16.5 FOR PRESSURE RATINGS

DIMENSIONS								
NPT SIZE	A		B		C (*)		APPROX. WEIGHT	
	IN	mm	IN	mm	IN	mm	LBS	KGS
1/4	3.750	95	0.813	21	6.000	152	14.40	6.53
3/8	3.750	95	0.813	21	6.000	152	14.40	6.53
1/2	4.500	114	1.063	27	7.500	191	15.60	7.08
3/4	4.500	114	1.063	27	7.500	191	15.60	7.08
1	4.880	124	1.250	32	8.000	203	16.80	7.62
1 1/4	6.000	152	2.000	51	10.500	267	40.80	18.51
1 1/2	6.000	152	2.000	51	10.500	267	40.80	18.51
2	6.000	152	2.000	51	10.500	267	40.80	18.51

(\*) STANDARD BOLT LENGTH SHOWN. OPTIONAL WINDOW MATERIALS OR USE OF STUDS MAY INCREASE LENGTH FOR SINGLE WINDOW (1 PER SIDE) TEMPERED GLASS.