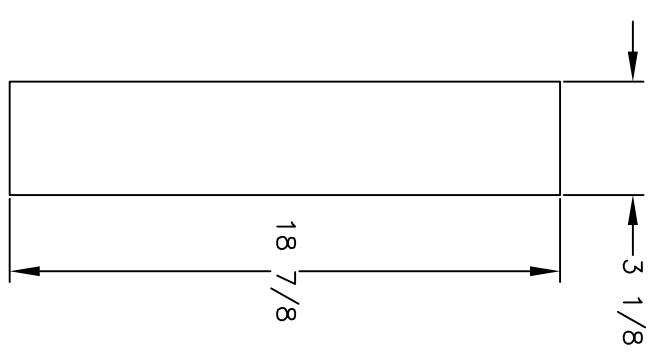
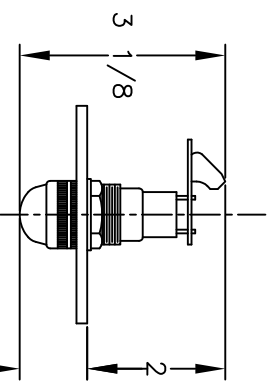
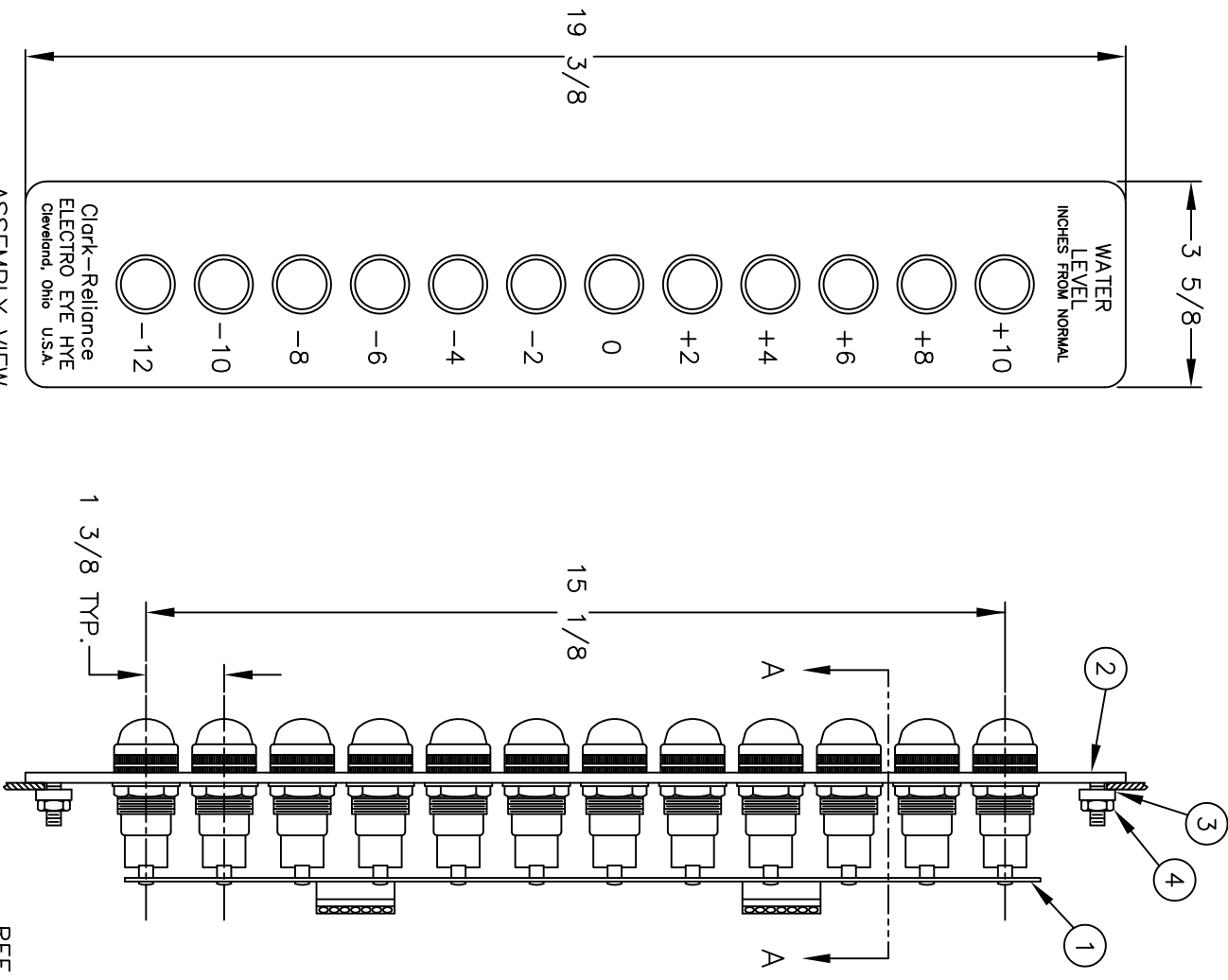


BILL OF MATERIAL					
ITEM	PART NO.	QTY.	DESCRIPTION	MAT'L.	DWG. NO.
1	STA-12	1	12 LIGHT SUB-ASSEMBLY		
2	E6-12	1	NAMEPLATE	ALUM.	E17003-A
3	E1-7	2	PANEL BRACKET	C.R.S.	E17000-A
4	X171271	2	HEX NUT 1/4-20	STN. STL.	

REPLACEMENT PARTS		
PART NO.	DESCRIPTION	
L12-5B	LAMP 30V-6W	
PC-36R	LAMP SOCKET W/LENS	
L12-3A	LENS (RED)	



ASSEMBLY VIEW

UNLESS OTHERWISE NOTED:

- TOLERANCES (Ø)
- DECIMAL & STOCK
- FIN. FRACTIONAL (UP TO 1", NOT INCL.) (Ø, 0.10)
- FIN. FRACTIONAL (1" INCL., UP TO 3") 1/64
- FIN. FRACTIONAL (3" INCL., UP TO 6") 1/32
- FIN. FRACTIONAL (6" INCL., UP TO 12") 1/16
- FIN. FRACTIONAL (12" & OVER) 1/8
- ANGLES
- MACHINE FINISH- 125° V DR SMOOTHER
- REMOVE BURRS AND SHARP EDGES

REF. DWG. E17031-A FOR FIELD WIRING

THE CLARK-RELIANCE CORP.

STRONGSVILLE, OHIO

STI-12 ELECTRO EYE HYE

12 LIGHT INDICATOR ASSEMBLY

REV	DESCRIPTION	DATE	BY
1	REDRAWN - NO CHANGES	7-21-93	FAS
	REVISIONS		STG

MATERIAL			
DRAWN	FAS	SCALE	DATE
CHKD.		NONE	12-10-93
DRAWING NO.		REV.	
E11041-A		1	