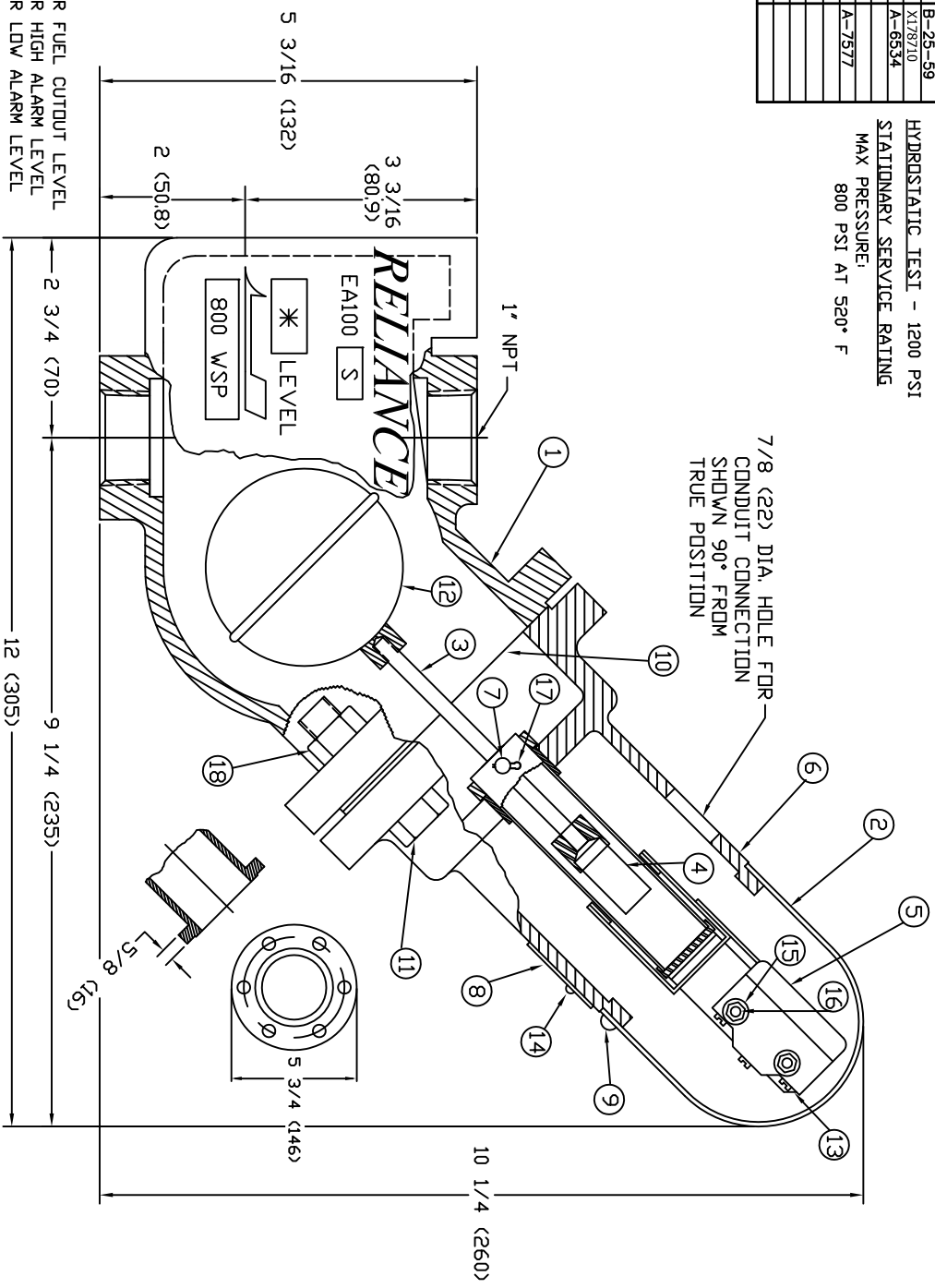
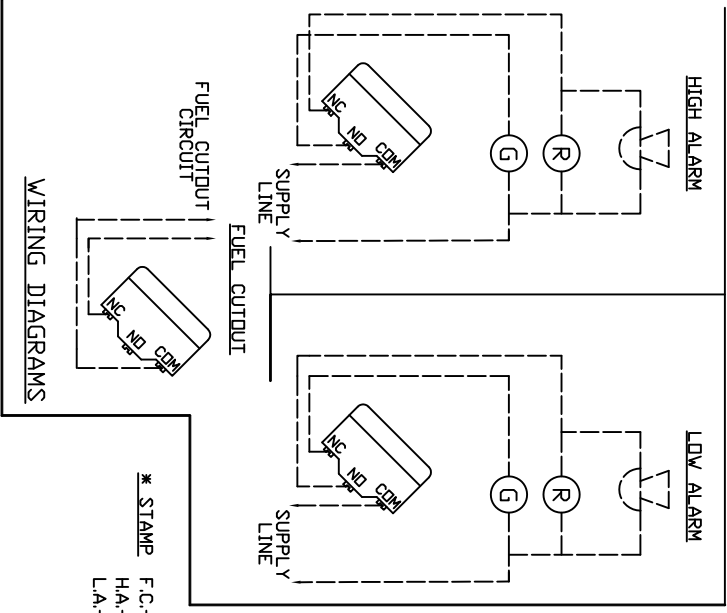


ITEM	QTY.	DESCRIPTION	PART NO.	MAT'L SPEC	DWG. NO.
1	1	BODY	EA100S-2	CAST STEEL 480 DR. 480	B-11878
2	1	SWITCH COVER	EA100-23	MODEL 8127-58	B-88338
3	1	CONNECTOR ROD ASSEMBLY	EA100-12	STAINLESS STEEL 18-8	B-88338
4	1	MAGNET ASSEMBLY	EA100-13	ALUM V. MODEL PLAND	B-88338
5	1	SWITCH ASSEMBLY	EA100-14X	ALUM V. MODEL PLAND	B-88338
6	1	SWITCH HOUSING ASSEMBLY	EA100-27S	CAST STEEL 480 DR. 480	A-15970
7	1	LEVER PIN	EA100-21	STAINLESS STEEL 18-8	B-88338
8	1	NAME PLATE	EA100-17	ALUMINUM	B-25-59
9	1	RHMS 10 - 32 3/8	EA100-17	18-8 SS	X178710
10	1	GASKET	C1-3	STEEL	A-6534
11	6	CAP BOLT 1/2 - 13 X 2	X172372	STEEL A193 GR. B-7	
12	1	FLOAT	F3S	FIBER	A-7577
13	1	SWITCH INSULATOR	EA8-15	STAINLESS STEEL 480 TRSH	
14	2	METALLIC DRIVE SCREW U4 X 3/4	X173260	STEEL	
15	2	SHAKEPROOF #6 LOCK WASHER	X174280	STEEL	
16	2	R.H. SCREW & NUT 6 - 32 X 1	X172860	BRASS	
17	2	COUNTER PIN 3/8 X 1/2	X171700	STAINLESS STEEL 18-8	
18	6	HEAVY HEX NUT 1/2 - 13	X171501	STAINLESS STEEL 18-8	

NOTES:
 MICRO SWITCH, TYPE BZ-2RW82444-A2
 UNDERWRITER APPROVED
 FOR THE FOLLOWING RATINGS:
 5A-125,250, DR 480 VAC
 1/2A-125 VDC
 1/4A-250 VDC
 HYDROSTATIC TEST - 1200 PSI
 STATIONARY SERVICE RATING
 MAX PRESSURE:
 800 PSI AT 520° F



10 03/15/2013 X178710 WAS X172910: PER CDC 13-092
 REV DATE CHANGE
 MANUFACTURED BY
Clark-Reliance
 16633 FOLTZ PARKWAY
 STRONGSVILLE, OH 44149 USA
 PH: 440-572-1500
 WEB: www.clarkreliance.com

CLARK-RELIANCE®
 EA100S LEVALARM ASSEMBLY
 SRM BY
 PART NUMBER: REA100S
 TOLERANCE CLASS (PER PES-004): DEFINED BY PES-004
 MATERIAL:
 REVISION: REDRAWN, NO CHANGE
 DRAWN: CG DRAWING NO.: B-9970
 CHECKED: ST
 DATE: 8/17/10
 REV: 10