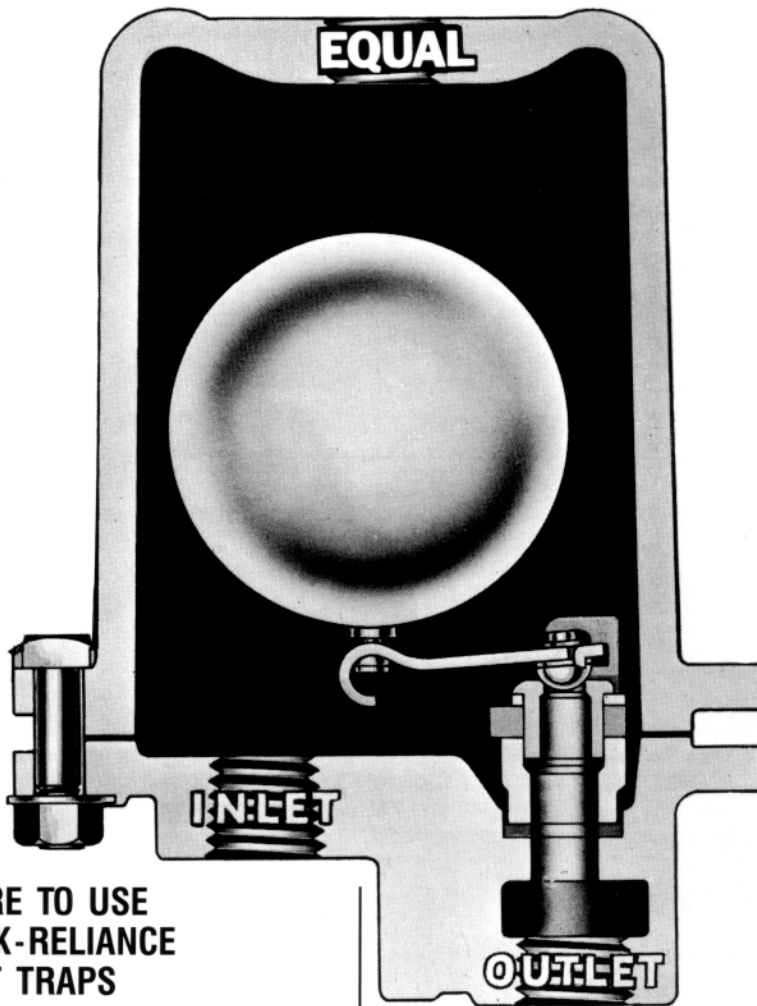
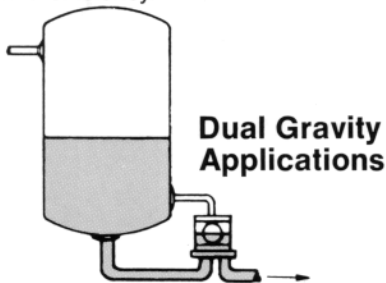


Clark-Reliance FLOAT OPERATED TRAPS



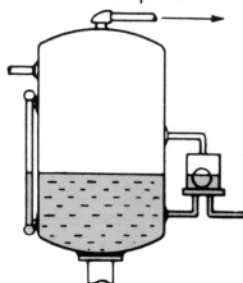
WHERE TO USE CLARK-RELIANCE FLOAT TRAPS

Clark-Reliance float operated traps give maximum capacity drainage of accumulated liquids from steam, air or gas lines. They are specially designed to drain variable condensate loads. This is important for superheated steam systems, where light-load or no-load conditions exist, without affecting their performance. Here are specific applications showing Clark-Reliance versatility and efficiency.



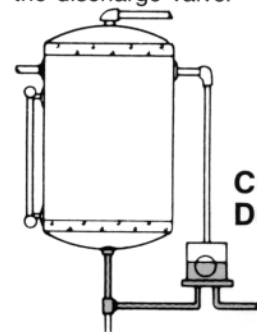
The ball float in Clark-Reliance dual-gravity drainers is weighted to sink

in the lighter of two liquids. It will float in the heavier liquid. When the heavy liquid enters the drainer, the float becomes buoyant and opens the discharge valve. This allows the heavy liquid to be discharged from the unit. Typical installations include: water removal from gasoline accumulators, settling tanks, evaporators and pipe lines carrying light liquids with water present.



Float Traps may be used to maintain constant levels in tanks and reservoirs. As liquid level rises, the float

buoyancy increases. When the buoyancy is sufficient to overcome the force exerted by the fluid pressure against the valve, the float mechanism will open the discharge valve. Pressure then forces the liquid out of the trap, lowering the liquid level. As the level drops, the float loses buoyancy and sinks to close the discharge valve.



When the float trap is placed below the level of a tank or fluid line, liquid flows continuously into and from the trap at an equal rate which holds the float at a point of equilibrium.

HIGHER CAPACITY LOWER COST

Clark-Reliance float operated traps incorporate the Duo-Step principle, using two fulcrum points to develop maximum power and valve travel.

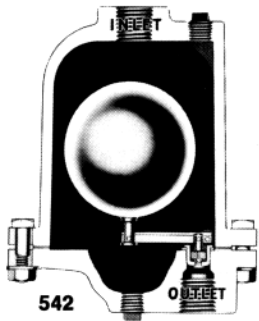
Because of Duo-Step leverage, these traps handle greater capacities than simple leverage-type float traps. And their size and weight are **much less** than either simple leverage or compound leverage float traps. This means larger capacities for less money!

All stainless steel floats and levers, heat-treated stainless steel seats and discs assure low maintenance and long service life. Choose from two Clark-Reliance series:

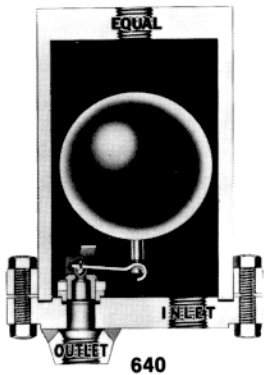
- Cast iron (ASTM Class 30) for steam pressures to 250 PSIG at 450° F., and 300 PSIG at 150° F.
- Fabricated steel for steam pressures to 600 PSIG at 750° F., and 1000 PSIG at 150° F.

Performance proven for every application!

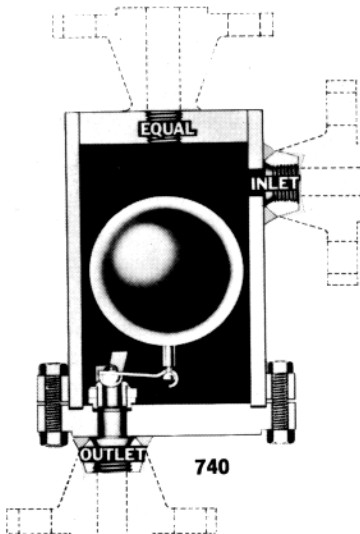
Trap No. 542 — Constructed of high pressure cast iron (ASTM Class 30) for pressures to 250 PSIG at 450° F. and 300 PSIG at 150° F.



Trap No.	In and Out Conn.	Equal Conn.	Dimensions			Continuous discharge capacities in G.P.M. at indicated pressures. Orifice diameters are shown at the maximum operating pressure for each trap.										
			HT.	DIA.	WT.	15	30	50	75	80	100	125	150	200	250	300
542	1/2" or 3/4"		6 11/16"	5 5/8"	11	9/64 1.2	9/64 1.6	9/64 2.0	9/64 2.5	9/64 2.5	7/64 1.7	7/64 1.9	7/64 2.0	9/64 1.2	9/64 1.2	1/16 .9



Trap Series 640 and 740 — Constructed of fabricated steel for pressures to 600 PSIG at 750° F. or 1000 PSIG at 150° F. All internal parts are of stainless steel. Series 640 and 740 are provided with Duo-step leverage for greater capacities at lower cost.



	640 740	641 741	642 742	643 743	644 744
Pipe Size	1/2", 3/4", 1"	3/4", 1", 1 1/4"	1", 1 1/4", 1 1/2"	1 1/4", 1 1/2"	1 1/2", 2"
Equalizer Connection	1/2"	1/2"	3/4"	1"	1"
Height	8 5/8"	11 1/4"	12 11/16"	14"	15 11/16"
Diameter	6 1/4"	7 3/4"	9 1/8"	10 7/8"	11 3/8"
Weight	23	46	75	106	147

Note: Above traps can be furnished with socketweld connection. 740 series can be furnished with flanged connection.

DISCHARGE CAPACITIES

CLARK 640 AND 740 SERIES FLOAT TRAPS

Orifice Size and Continuous Flow Capacity (G.P.M.)

		640 & 740									
		SPECIFIC GRAVITY									
PSI		1.0	.90	.85	.80	.75	.70	.65	.60	.55	.50
5	5/16	7/16	7/16	7/16	7/16	7/16	7/16	7/16	7/16	7/16	25/64
	6/6	6/6	6/6	6/6	6/6	6/6	6/6	6/6	6/6	6/6	5/2
10	7/16	7/16	7/16	7/16	7/16	25/64	25/64	25/64	25/64	21/64	19/64
	9/8	9/8	9/8	9/8	9/8	7/7	7/7	6/5	5/5	4/6	
30	23/64	21/64	21/64	19/64	19/64	7/32	1/4	1/4	7/32	3/16	11/64
	11	9/6	9/6	7/6	6/6	5/2	5/2	4/1	2/9	2/5	
50	19/64	9/32	1/4	1/4	7/32	7/32	13/64	11/64	11/64	5/32	
	9/4	8/2	6/6	6/6	5/2	5/2	4/4	3/2	3/2	2/7	
75	13/64	3/16	11/64	11/64	7/32	3/16	11/64	11/64	5/32	9/64	
	8.0	6.0	6.0	6.0	5.3	4.4	3.8	3.8	3.1	2.5	
100	7/32	13/64	13/64	3/16	11/64	11/64	11/64	5/32	9/64	1/8	
	6.9	6.0	6.0	5.0	4.3	4.3	3.5	3.5	2.9	2.2	
125	13/64	3/16	11/64	11/64	11/64	7/32	3/16	9/64	1/8	7/64	
	6.6	5.5	4.7	4.7	4.7	4.0	3.1	2.4	1.9		
150	3/16	11/64	11/64	11/64	5/32	5/32	9/64	1/8	7/64	3/32	
	5.8	5.1	5.1	5.1	4.3	4.3	3.5	2.6	2.0	1.4	
200	11/64	11/64	3/16	3/16	3/16	3/16	3/16	3/32	3/32	5/64	
	5.7	5.7	4.8	3.8	3.8	2.2	1.7	1.7	1.1		
250	5/32	9/64	9/64	1/8	1/8	7/64	3/8	5/64	5/64	1/16	
	5.3	4.1	4.1	3.2	3.2	2.5	1.8	1.2	1.2	.8	
300	4/4	3/4	3/4	2/6	2/6	1/9	1/9	1/3	8	.8	
	2.1	1.4	.9	.9							
500	5/64	1/16	1/16								
	1.6	1.0	1.0								
600	5/64	1/16	1/16								
	1.7	1.1									
700	1/16	1/16									
	1.2	1.2									
800	1/16										
	1.3										
900											
1000											

		641 & 741									
		SPECIFIC GRAVITY									
PSI		1.0	.90	.85	.80	.75	.70	.65	.60	.55	.50
5	21/32	21/32	21/32	21/32	21/32	21/32	21/32	21/32	21/32	19/32	7/16
	15	15	15	15	15	15	15	15	15	13	6/6
10	21/32	21/32	21/32	21/32	21/32	19/32	33/64	33/64	7/16	21/64	
	21	21	21	21	21	18	14	14	9/8	5/5	
30	33/64	7/16	7/16	23/64	23/64	23/64	21/64	21/64	9/32	7/32	
	23	16	16	11	11	11	9/6	9/6	6/6	4/1	
50	7/16	23/64	23/64	23/64	21/64	21/64	19/64	19/64	7/32	5/32	
	20	15	13	13	11	11	9/4	9/4	5/2	2/7	
75	23/64	23/64	21/64	21/64	19/64	19/64	1/4	7/32	3/16	9/64	
	16	16	13	13	11	11	8/0	6/0	4/4	2/5	
100	23/64	21/64	19/64	19/64	9/32	1/4	7/32	13/64	3/16	9/64	
	18	15	12	12	11	9/0	6/9	6/0	5/0	2/9	
125	21/64	19/64	9/32	1/4	1/4	7/32	13/64	3/16	11/64	1/8	
	17	14	12	9/8	9/8	7/6	6/6	5/5	4/7	2/4	
150	19/64	9/32	1/4	1/32	7/32	13/64	3/16	3/16	5/32	7/64	
	15	13	10	8/2	8/2	6/9	5/8	5/8	4/3	2/0	
200	1/4	7/32	7/32	13/64	3/16	3/16	5/32	5/32	1/8	3/32	
	11	9/2	9/2	8/0	6/6	6/6	4/8	4/8	2/9	1/7	
250	7/32	13/64	3/16	3/16	11/64	11/64	5/32	9/64	5/64	5/64	
	10	9/0	7/4	7/4	6/2	6/2	5/3	4/1	2/5	1/2	
300	15/64	7/16	3/16	11/64	11/64	5/32	9/64	1/8	3/32	5/64	
	9/4	7/8	7/8	6/8	6/8	5/6	4/4	3/4	1/9	1/3	
400	3/16	3/16	11/64	5/32	5/32	9/64	1/8	7/64	3/32	1/16	
	8/4	8/4	7/4	6/2	6/2	4/9	3/8	3/0	2/1	9	
500	11/64	5/32	5/32	5/64	1/8	11/64	3/32	3/32	5/64		
	8/0	6/8	6/8	5/3	4/1	4/1	3/2	2/3	1/6		
600	5/32	9/64	9/64	1/8	7/64	7/64	3/32	5/64	1/16		
	7/2	5/6	5/6	4/4	3/4	3/4	2/4	1/7	1/1		
700	9/64	7/64	7/64	3/64	5/64	5/64	1/16				
	6/1	3/7	3/7	2/6	1/8	1/8	1/2				
800	1/8	7/64	3/32	3/32	5/64	1/16					
	5/1	4/0	2/8	2/8	1/9	1/3					
900	7/64	3/32	3/32	5/64	5/64	1/16					
	4/1	2/9	2/9	2/0	2/0	1/3					
1000	7/64	3/32	5/64	5/64	1/16	1/16					
	4/3	3/0	2/1	2/1	1/4	1/4					

CAPACITY (LB PER HR) = CAPACITY (GPM) X SPEC GRAV X 500
 CAPACITY (GPM) = CAPACITY (LB PER HR) / SPEC GRAV X 500

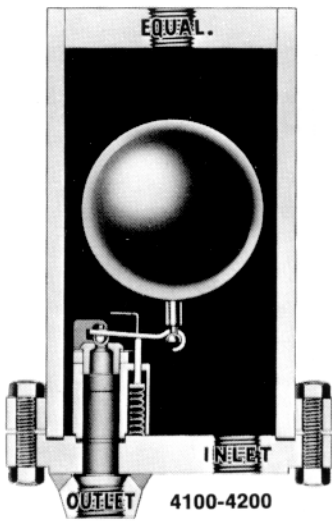
NOTE:
 IF THE SPEC GRAV OF THE LIQUID IS BETWEEN VALUES
 GIVEN IN CHART, REFER TO THE NEXT LIGHTER LIQUID

SERIES 640,740,4100 & 4200

SERVICE PRESSURE RATING	
PRESSURE	MAX TEMP
600 PSI	750°F
700 PSI	600°F
800 PSI	350°F
900 PSI	200°F
1000 PSI	150°F

		642 & 742									
		SPECIFIC GRAVITY									
PSI		1.0	.90	.85	.80	.75	.70	.65	.60	.55	.50
5	21/32	21/32	21/32	21/32	21/32	21/32	21/32	21/32	21/32	19/32	33/64
	15	15	15	15	15	15	15	15	15	15	
10	21/32	21/32	21/32	21/32	21/32	21/32	21/32	21/32	19/32	33/64	33/64
	21	21	21	21	21	21	21	21	18	14	
30	21/32	21/32	19/32	33/64	33/64	7/16	7/16	7/16	7/16	23/64	
	36	36	32	23	23	16	16	16	16	11	
50	19/32	33/64	7/16	7/16	7/16	7/16	25/64	25/64	9/32	5/32	
	38	29	20	20	20	20	16	13	8/2		
75	33/64	7/16	7/16	7/16	25/64	25/64	21/64	21/64	19/64	1/4	
	34	24	24	24	19	16	13	11	8/0		
100	7/16	7/16	7/16	25/64	25/64	21/64	21/64	9/32	1/4	7/32	
	28	28	28	22	18	15	11	9/0	6/9		
125	7/16	25/64	25/64	23/64	21/64	21/64	9/32	1/4	1/4	13/64	
	30	24	24	20	17	17	12	9/8	9/8	6/6	
150	25/64	23/64	21/64	21/64	19/64	9/32	1/4	1/4	7/32	3/16	
	25	22	18	18	15	13	10	10	8/2	5/8	
200	23/64	21/64	19/64	9/32	1/4	1/4	1/4	7/32	13/64	5/32	
	24	19	17	15	11	11	11	9/2	8/0	4/8	
250	21/64	9/32	1/4	1/4	1/4	7/32	13/64	11/64	9/64		
	2/4	1/6	1/3	1/3	1/3	1/3	1/0	9/0	6/2	4/1	
300	19/64	1/4	1/4	1/4	7/32	7/32	13/64	11/64	5/32	1/8	
	2/0	1/3	1/3	1/3	1/1	9/4	6/8	5/6	3/4		
400	1/4	1/4	7/32	13/64	3/16	11/64	5/32	1/8	7/64	3/32	
	1/5	1/5	1/2	1/2	1/0	8/4	7/2	6/2	3/8	3/0	
500	7/32	12/32	13/64	3/16	11/64	5/32	9/64	1/8	7/64	3/32	
	12	12	11	9/2	8/0	6/8	5/3	4/1	3/2	2/3	
600	13/64	5/32	9/64	1/8	1/64	3/4	3/4	3/2	5/64		
	11	8/4	7/2	5/6	4/4	4/4	3/4	2/4	1/7		
700	3/16	5/32	9/64	1/8	1/8	7/64	3/32	1/16			
	10	7/8	6/1	6/1	4/8	3/7	2/6	1/2			
800	11/64	9/64	9/64	1/8	7/64	3/32	5/64	1/16			
	9/8	6/6	6/6	5/1	4/0	2/8	2/0	1/3			
900	5/32	9/64	1/8	7/64	3/32	5/64	1/16				
	8/5	6/8	5/3	4/1	4/1	3/0	2/1	1/3			
1000	9/64	1/8	1/8	7/64	3/32	5/64	1/16				
	7/0	5/5	5/5	4/3	3/0	2/1	1/4	1/4			

		643 & 743									



Trap Series 4100 and 4200 — Constructed of fabricated steel for pressures to 600 PSIG at 75° F. or 1000 PSIG at 150° F. All internal parts are of stainless steel. Series 4100-4200 operating mechanisms include spring assist for greater capacities at higher pressures and lower specific gravities. The 4101 and 4201 are equipped with a side inlet similar to the 740 series.

	4100 4101	4200 4201
Pipe Size	¾", 1", 1¼"	1", 1¼", 1½"
Equalizer Connection	½"	¾"
Height	12¾"	13¾"
Diameter	7¾"	9⅝"
Weight	48	76

Note: Above traps can be furnished with socketweld connection. 4101 and 4201 can be furnished with flanged connection.

Orifice Sizes and Continuous Flow Capacities (G.P.M.)

Safety factor: A safety factor of 1½ to 2 times the maximum load is recommended for the normal operation. Greater safety factors may be desirable to get the benefits of oversized orifices. Oversizing float traps does not affect their operation as it does in other types of traps.

4100 AND 4200 SERIES

4100 & 4101		SPECIFIC GRAVITY									
PSI	1.0	90	85	80	75	70	65	60	.55	50	
5	21/32	21/32	21/32	21/32	21/32	21/32	21/32	21/32	19/32	33/64	33/64
10	15	15	15	15	15	15	15	15	13	10	
30	21	21	21	21	18	14	14	9.8	9.8		
50	33/64	7/16	7/16	25/64	23/64	23/64	21/64	19/64	19/64		
75	23	16	16	13	11	11	9.6	7.6	7.6		
100	7/16	23/64	23/64	23/64	21/64	21/64	21/64	19/64	9/32	9/32	
125	20	13	13	13	11	11	9.4	8.2	8.2		
150	23/64	21/64	21/64	21/64	19/64	19/64	9/32	1/4	1/4		
200	16	13	13	13	11	11	10	8	8		
250	21/64	19/64	19/64	9/32	9/32	9/32	1/4	1/4	7/32	7/32	
300	15	12	12	11	11	11	9.0	6.9	6.9		
400	19/64	9/32	9/32	1/4	1/4	1/4	7/32	13/64	13/64		
500	14	12	12	9.8	9.8	9.8	7.6	6.6	6.6		
600	19/64	1/4	1/4	1/4	7/32	7/32	13/64	13/64	3/16	3/16	
700	15	10	10	10	8.2	6.9	6.9	5.8	5.8		
800	1/4	7/32	7/32	7/32	13/64	13/64	3/16	5/32	5/32		
900	11	9.2	9.2	9.2	8.0	8.0	6.6	4.8	4.8		
1000	7/32	13/64	13/64	13/64	3/16	3/16	5/32	5/32	5/32		
	10	9.0	9.0	9.0	7.4	7.4	5.3	3.3	3.3		
	13/64	3/16	3/16	3/16	5/32	5/32	9/64	9/64	9/64		
	9.4	7.8	7.8	7.8	5.6	5.6	4.4	4.4	4.4		
	3/16	5/32	5/32	5/32	5/32	5/32	9/64	9/64	9/64		
	8.4	6.2	6.2	6.2	6.2	6.2	4.9	4.9	3.8		
	3/16	5/32	5/32	5/32	9/64	9/64	9/64	9/64	1/8	1/8	
	9.2	6.8	6.8	6.8	5.3	5.3	5.3	4.1	4.1		
	5/32	5/32	5/32	9/64	9/64	9/64	1/8	1/8	7/64	7/64	
	7.2	7.2	7.2	5.6	5.6	5.6	4.4	4.4	3.4		
	5/32	9/64	9/64	9/64	9/64	1/8	1/8	7/64	7/64		
	7.8	6.1	6.1	6.1	6.1	4.8	4.8	3.7	3.7		
	9/64	9/64	9/64	9/64	1/8	1/8	1/8	7/64	7/64	3/32	
	6.6	6.6	6.6	6.6	5.1	5.1	5.1	4.0	4.0	2.8	
	9/64	9/64	9/64	1/8	1/8	7/64	7/64	7/64	3/32	3/32	
	6.8	6.8	6.8	5.3	5.3	4.1	4.1	3.0	3.0		
	9/64	1/8	1/8	1/8	7/64	7/64	3/32	3/32	3/32		
	7.0	5.5	5.5	5.5	4.3	4.3	3.0	3.0	3.0		

4200 & 4201		SPECIFIC GRAVITY									
PSI	1.0	90	85	80	75	70	65	60	.55	50	
5	23/64	23/64	23/64	23/64	23/64	23/64	23/64	23/64	23/64	23/64	23/64
10	4.6	4.6	4.6	4.6	4.6	4.6	4.6	4.6	4.6	4.6	
30	23/64	23/64	23/64	23/64	23/64	23/64	23/64	23/64	23/64	23/64	
50	6.5	6.5	6.5	6.5	6.5	6.5	6.5	6.5	6.5	6.5	
75	11	11	11	11	11	11	11	11	9.6	9.6	
100	23/64	23/64	23/64	23/64	23/64	23/64	21/64	21/64	19/64	9/32	
125	13	13	13	13	13	13	11	11	9.4	8.2	
150	23/64	23/64	23/64	23/64	23/64	23/64	21/64	21/64	19/64	9/32	
200	16	16	16	16	16	13	13	11	10	8.0	
250	23/64	23/64	21/64	21/64	21/64	19/64	19/64	9/32	1/4	7/32	
300	18	18	15	15	15	12	12	11	9.0	6.9	
400	23/64	21/64	21/64	19/64	19/64	19/64	9/32	9/32	1/4	7/32	
500	20	17	17	14	12	12	12	9.8	7.6	7.6	
600	19/64	19/64	19/64	9/32	1/4	1/4	1/4	7/32	7/32	13/64	
700	15	15	15	13	10	10	10	8.2	8.2	6.9	
800	9/32	1/4	1/4	1/4	7/32	7/32	13/64	13/64	3/16	3/16	
900	15	11	11	11	9.2	9.2	8.0	6.6	6.6		
1000	1/4	7/32	7/32	7/32	13/64	13/64	3/16	3/16	3/16		
	13	10	10	10	9.0	9.0	7.4	7.4	7.4	7.4	
	7/32	13/64	13/64	13/64	3/16	3/16	3/16	11/64	5/32	5/32	
	11	9.4	9.4	9.4	7.8	7.8	7.8	6.8	5.6	5.6	
	13/64	3/16	3/16	3/16	3/16	3/16	11/64	5/32	5/32	9/64	
	10	8.4	8.4	8.4	8.4	8.4	7.4	7.4	6.2	4.9	
	13/64	3/16	3/16	3/16	11/64	11/64	5/32	5/32	9/64	9/64	
	11	9.2	9.2	9.2	8.0	8.0	6.8	6.8	5.3	5.3	
	3/16	3/16	3/16	11/64	11/64	5/32	5/32	9/64	9/64	1/8	
	9.8	9.8	9.8	8.4	8.4	7.2	7.2	5.6	5.6	4.4	
	3/16	11/64	11/64	11/64	5/32	5/32	9/64	9/64	1/8	1/8	
	10	9.2	9.2	9.2	7.8	7.8	6.1	6.1	4.8	4.8	
	11/64	11/64	5/32	5/32	9/64	9/64	9/64	1/8	1/8	7/64	
	9.8	9.8	8.4	8.4	6.6	6.6	6.6	5.1	5.1	4.0	
	11/64	5/32	5/32	9/64	9/64	1/8	1/8	1/8	7/64	7/64	
	10.2	9.0	9.0	6.8	6.8	5.2	5.2	4.1	4.1		
	5/32	9/64	9/64	9/64	1/8	1/8	7/64	7/64	7/64	7/64	
	9.0	7.0	7.0	7.0	5.5	5.5	5.5	4.3	4.3	4.3	

FOR ADDITIONAL INFORMATION, CONTACT YOUR LOCAL CLARK-RELIANCE REPRESENTATIVE

Clark-Reliance

16633 Foltz Industrial Parkway, Strongsville, Ohio 44136, U.S.A.
Telephone: (440) 572-1500 • Fax: (440) 238-8828 • www.clark-reliance.com

