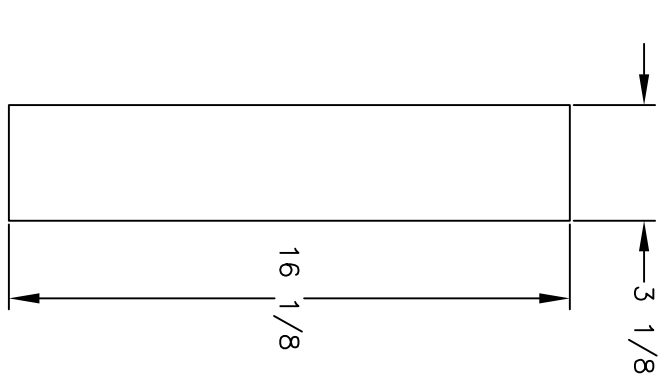
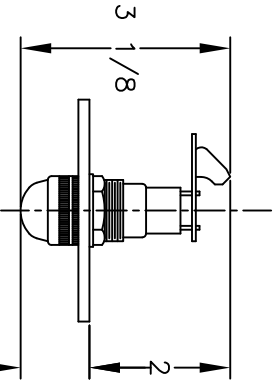
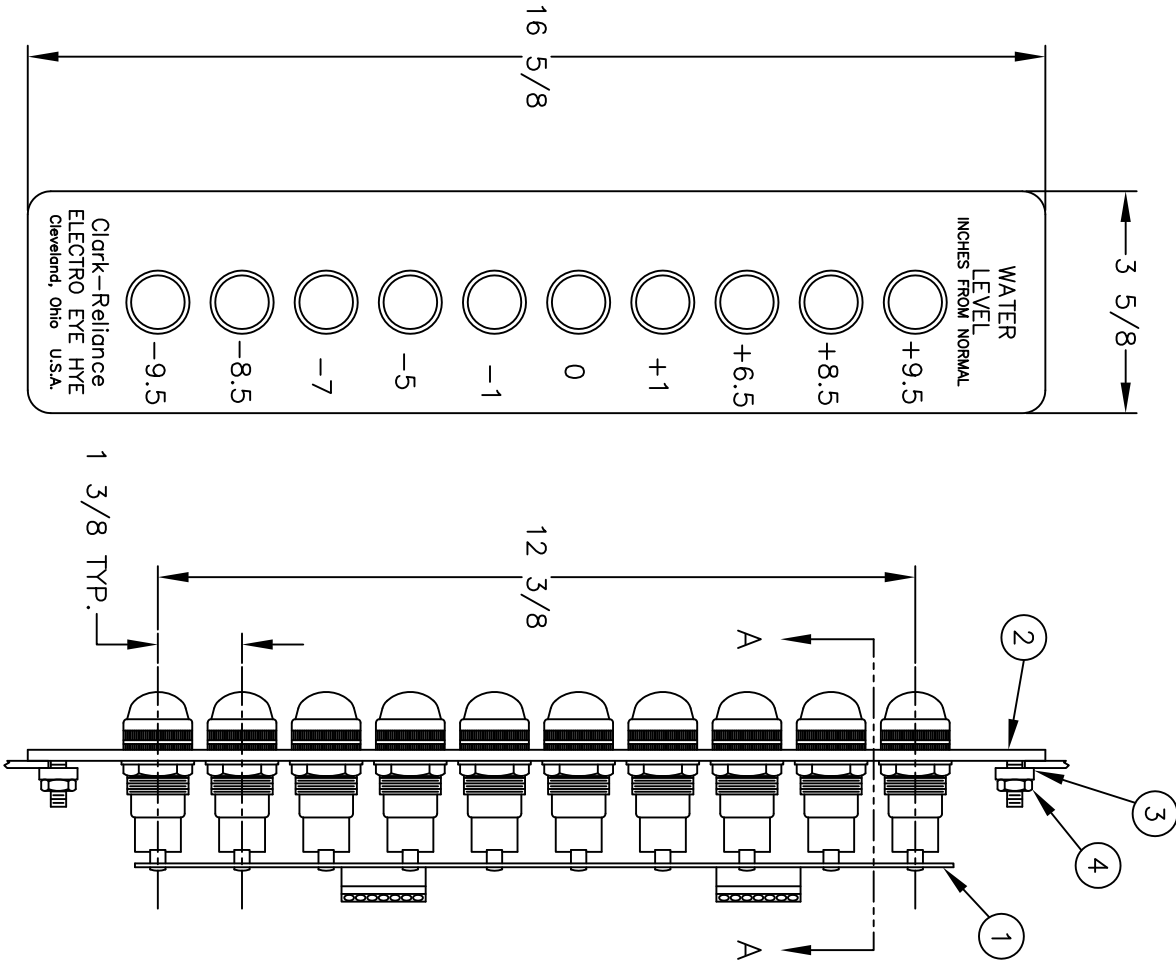


BILL OF MATERIAL

ITEM	PART NO.	QTY.	DESCRIPTION	MAT'L.	DWG. NO.
1	STA-10	1	10 LIGHT SUB-ASSEMBLY		
2	EI-6	1	NAMEPLATE	ALUM.	E17003-A
3	EI-7	2	PANEL BRACKET	C.R.S.	E17000-A
4	X171271	2	HEX NUT 1/4-20	STN. STL.	

REPLACEMENT PARTS	
PART NO.	DESCRIPTION
L12-5B	LAMP 30V-6W
L12-3	LAMP SOCKET W/LENS
L12-3A	LENS (RED)



ASSEMBLY VIEW

REF. DWG. E17031-A FOR FIELD WIRING

REV	DESCRIPTION	DATE	SIG
1	REDRAWN - NO CHANGES	7-21-93	FAS
2	LAMP SOCKET WAS PC-36R	5/17/05	ST

UNLESS OTHERWISE NOTED:  
 TOLERANCES (+)  
 DECIMAL & STOCK  
 FIN. FRACTIONAL (<UP TO 1' NOT INCL.> (<.010  
 FIN. FRACTIONAL (<1' INCL., UP TO 3'>) 1/64  
 FIN. FRACTIONAL (<3' INCL., UP TO 6'>) 1/32  
 FIN. FRACTIONAL (<6' INCL., UP TO 12'>) 1/16  
 FIN. FRACTIONAL (<12' & OVER> 1/8  
 ANGLES  
 MACHINE FINISH- 125° DR SMOOTHER  
 REMOVE BURRS AND SHARP EDGES

THE CLARK-RELIANCE CORP.  
 STRONGSVILLE, OHIO  
 STI-10 ELECTRO EYE HYE  
 10 LIGHT INDICATOR  
 ASSEMBLY

MATERIAL	
DRAWN	SCALE
FAS	NONE
CHKD.	DATE
	7-21-93
DRAWING NO.	REV.
E11040-A	2