

MATERIAL: SEE B/M  
 DRAWN: TFK  
 SCALE: NONE  
 CHECKED: DEP  
 DATE: 9/15/95



SIGHT FLOW INDICATOR  
 STYLE 805-S, 805-SD

Section: T400  
 Bulletin: T400.37  
 Date: 09/01/93  
 Supersedes: 12/01/00

VARIOUS PRESSURES

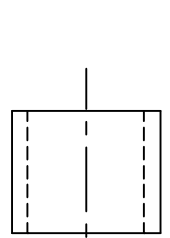
FILE NO.: T400-37.DWG

PARTS LIST

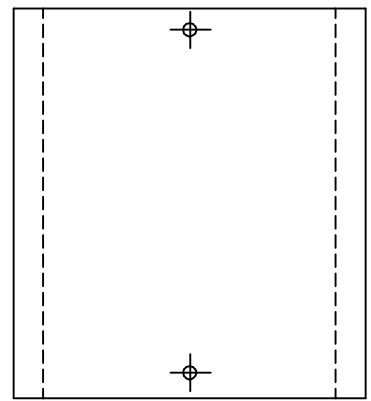
PIECE NO.	NAME OF PART	QUAN.	MATERIAL	COMMENTS
1	NUTS	6	STEEL	
2	HEAD	2	SEE BELOW	
3	SEAL GASKET	2		
4	CYLINDER	1	A-BORO	
5	RODS	3	STEEL	
6	NUTS	6	STEEL	
7	INDICATOR	1		

THIS DRAWING AND ALL INFORMATION ON IT IS THE PROPERTY OF JACOBY-TARBOX, DIVISION OF THE CLARK-RELIANCE CORPORATION. IT IS CONFIDENTIAL AND IS GIVEN TO YOU FOR A LIMITED PURPOSE AND MUST BE RETURNED UPON REQUEST. NEITHER THIS DRAWING NOR ANY PART OF IT NOR ANY INFORMATION CONCERNING IT MAY BE COPIED, EXHIBITED OR FURNISHED TO OTHERS NOR MAY PHOTOGRAPHS BE TAKEN OF ANY ARTICLE FABRICATED OR ASSEMBLED FROM THIS DRAWING WITHOUT CONSENT OF THE CLARK-RELIANCE CORPORATION.

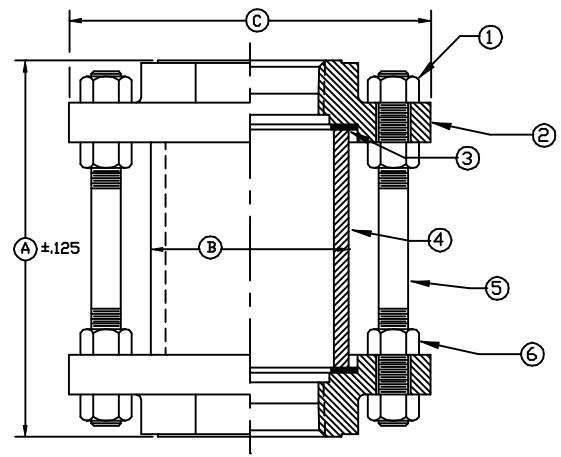
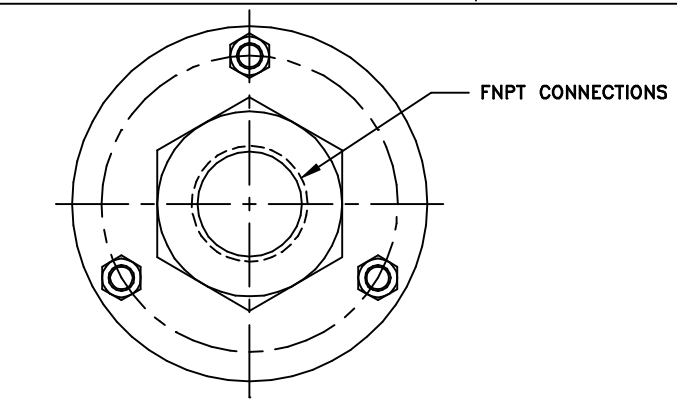
STANDARD OPTIONS:



⑦ DRIP TUBE  
 □ STYLE 805-SD



ACRYLIC SHIELD  
 AVAIL ALL STYLES



STYLE 805-S □

PRESSURE/TEMP. RATINGS

TEMP F	ALL MATERIALS *		
	1/8 TO 1	1-1/4, 1-1/2	2
-20 TO 100	150	120	100
150	150	120	100
200	150	120	100
250	150	120	100
300	150	120	100
350	150	120	100
400	150	120	100
450	150	120	100

STANDARD DESIGN MATERIALS:

- HEAD: ASTM A216-WCB/A515 GR 70/A36/A576 (CARBON STEEL) □
- ASTM A351-CF8M/A240/A276 (316 SS) □
- ASTM B62 (BRONZE) □
- ASTM A126 CLASS B (CAST IRON) □

\* BRONZE AND CAST IRON NOT RECOMMENDED FOR SERVICE ABOVE 400 F

FASTENERS: STEEL  
 DRIP TUBE: 316 SS  
 OPTIONAL ALLOYS FURNISHED UPON REQUEST

OPTIONAL FEATURES:  
 SPECIAL LENGTHS UP TO 48 INCHES AVAILABLE ("A" DIM)  
 PRESSURE RATINGS DECREASE WITH ADDITIONAL LENGTH  
 MODEL: 850-SL  
 SPECIAL ETCHED TUBES (VOLUME/LENGTH) PER APPLICATION  
 304/316 SS TRIM AVAILABLE

DIMENSIONS

PSI	SIZE		A		B		C		WEIGHT	
	IN	DN	IN	mm	IN	mm	IN	mm	LBS	KGS
150	1/8	15	4-1/2	114	1-3/4	44	3-3/4	95	2.0	.9
150	1/4	20	4-1/2	114	1-3/4	44	3-3/4	95	2.0	.9
150	3/8	25	4-1/2	114	1-3/4	44	3-3/4	95	2.0	.9
150	1/2	40	4-1/2	114	1-3/4	44	3-3/4	95	2.0	.9
150	3/4	50	4-1/2	114	1-3/4	44	3-3/4	95	2.0	.9
150	1	65	4-1/2	114	2	51	4-1/4	108	3.0	1.4
120	1-1/4	80	4-3/4	120	2-1/2	64	4-3/4	121	4.0	1.8
120	1-1/2	100	4-3/4	120	2-1/2	64	4-3/4	121	4.0	1.8
100	2	150	5-1/2	140	3	76	5-3/4	146	7.0	3.2