

TVIP FURNISHED WITH 30-INCH,  
HIGH-TEMPERATURE LEADS CONNECTED TO  
EACH ELECTRODE FITTING  
USE 18 A.V.G. TEFLON INSULATED WIRE  
TYPE MIL-W 25038

**BILL OF MATERIAL**

ITEM	PART NO.	QTY.	DESCRIPTION	MATERIAL	DWG. NO.
1	ELF-1P	1	BODY, SEAMLESS STEEL PIPE	ASTM A106	
2	FSL EL5P	3	ADAPTOR		
3	FSL ZF3R	3	COUPLING NUT		
4	FSB03D	3	BRAZED ELECTRODE FITTING ASSY		
5	ELF-23	1	ELECTRODE FITTING HOUSING	STN. STL.	EL7032-B
6		2	SCREW, R.H. MACH. 10-24 X 3/8	STN. STL.	
7		1	SCREW, R.H. MACH. 10-24 X 1/2	STN. STL.	
8		2	NUT, HEX 10-24	STN. STL.	

A	
B	

MODEL NO.,  
W.S.P. 1800-3000 P.S.I. AT 695°F,  
HYDROTEST AT 4500 P.S.I.

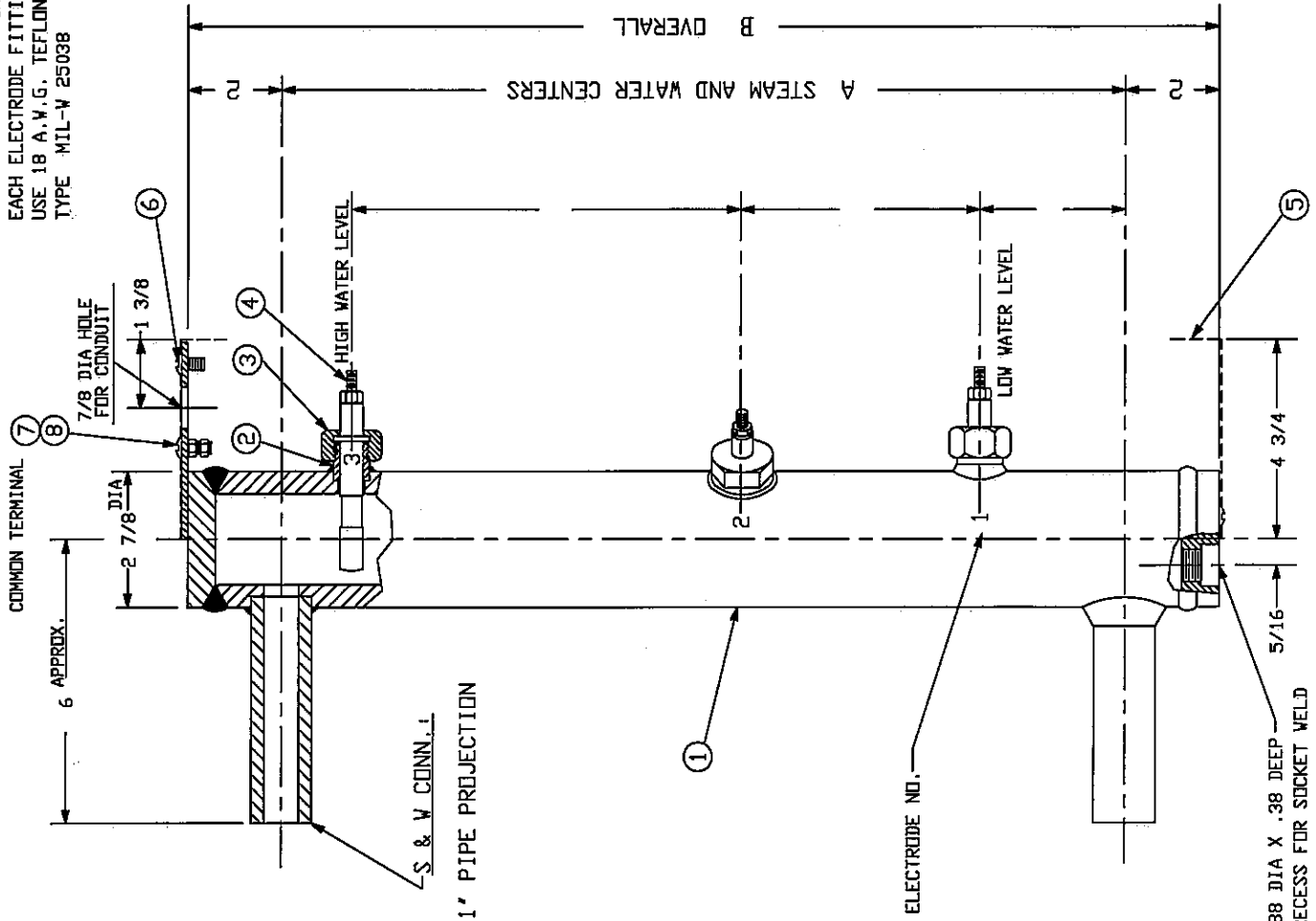
**NOTES:**

- 1) CUSTOMER TO SPECIFY TYPE OF S & W CONN.
- 2) SHUTOFF VALVES SHOULD BE PLACED BETWEEN STEAM DRUM AND TVIP
- 3) W.S.P. UP TO 3000 P.S.I. HYDROTEST AT 4500 P.S.I.

THE CLARK-RELIANCE CORP.  
STRONGSVILLE, OHIO U.S.A.

MODEL NO.  
TWIP ASSEMBLY

SCALE: NONE DATE 1/20/98  
DRAWN BY: ST  
CHECKED BY: NO. TDFS-3



TYPICAL ARRANGEMENT