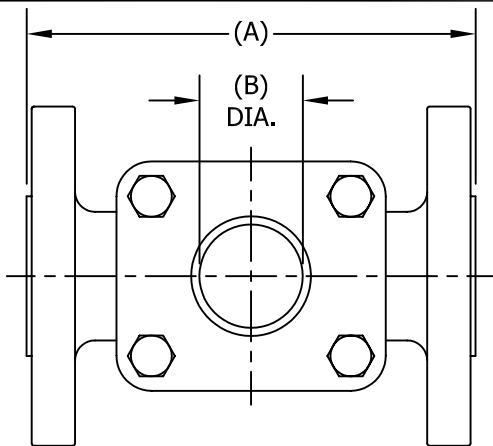


THIS DRAWING AND ALL INFORMATION ON IT IS THE PROPERTY OF THE CLARK-RELIANCE CORPORATION. IT IS CONFIDENTIAL AND IS GIVEN TO YOU FOR A LIMITED PURPOSE AND MUST BE RETURNED UPON REQUEST. NEITHER THIS DRAWING NOR ANY PART OF IT NOR ANY INFORMATION CONCERNING IT MAY BE COPIED, EXHIBITED OR FURNISHED TO OTHERS NOR MAY PHOTOGRAPHS BE TAKEN OF ANY ARTICLE FABRICATED OR ASSEMBLED FROM THIS DRAWING WITHOUT CONSENT OF THE CLARK-RELIANCE CORPORATION.

JACOBY-TARBOX®
 A Product of the Clark-Reliance Corporation
 16633 FOLTZ PARKWAY
 STRONGSVILLE, OH 44149 USA
 PH: +1 440-572-1500
 www.clark-reliance.com

**SIGHT FLOW INDICATOR
 MODEL 910-FA, 608-FA, 935-FA
 ASME CLASS 150 SERVICE**

SECTION: T400
 BULLETIN: T400.02
 DATE: 03/07/11
 SUPERSEDES: 07/29/09
 FILE NO.: T400-02.DWG
 DRAWN: FWK | CHECKED: DEP
 SCALE: NONE



PARTS LIST			
PIECE NO.	PART NAME	QTY.	STANDARD DESIGN MATERIALS
1	BODY (SEE NOTE (1))	1	ASTM A216-WCB (CARBON STEEL) ASTM A351-CF8M (316 SS) ASTM B62 (BRONZE)
2	RETAINER (2)	2	ASTM A216-WCB (CARBON STEEL) (1 / 2" - 6") ASTM A516 GR.70 (CARBON STEEL) (8" & UP)
3	BOLT (2), (3)	4	ASTM A354-BD (ALLOY STEEL)
4	NUT (2), (3)	4	ASTM A194-2H (ALLOY STEEL)
5	WINDOW (4)	2	TEMPERED BOROSILICATE
6	SEAL GASKET (5)	2	NEOPRENE
7	CUSHION GASKET	2	FIBER
8	INDICATOR	1	FLAPPER (316SS) DRIP TUBE (316SS) ROTOR (PTFE) FLUTTER (PTFE)

NOTES (REFERENCE PARTS LIST)

(1) a. ADDITIONAL ALLOYS AVAILABLE PER REQUEST
 b. OPTIONAL PFA (TEFLON®) LINING PER T400.10
 c. BRONZE AVAILABLE TO 8" SIZE MAX
 d. BRONZE FLANGES MACHINED PER ASME B16.24 CLASS 150 FF

(2) ADDITIONAL ALLOYS AVAILABLE PER REQUEST

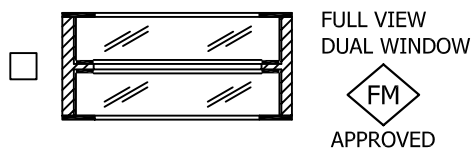
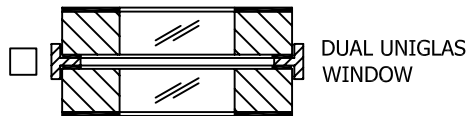
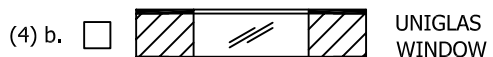
(3) BOLT & NUT QUANTITIES FOR 10" SIZE UNITS AND LARGER INCREASE TO (16) EACH

(4) a. OPTIONAL MATERIALS AVAILABLE PER PROCESS CONDITIONS
 b. ADDITIONAL WINDOW OPTIONS AVAILABLE SEE SIDE SECTION FOR DETAILS

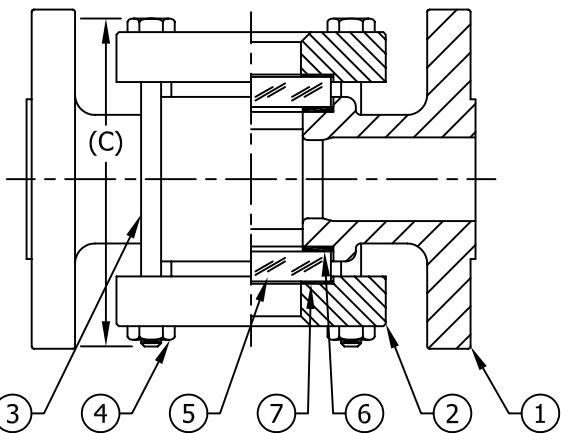
(5) COMMON OPTIONAL SEAL MATERIALS AVAILABLE

<input type="checkbox"/> PTFE	<input type="checkbox"/> GRAPHITE	<input type="checkbox"/> FIBER
-------------------------------	-----------------------------------	--------------------------------

DESIGNED IN ACCORDANCE WITH ASME B31.1 & B31.3 FOR PRESSURE VERSUS TEMPERATURE RATINGS USING ONLY LISTED METALS IN FABRICATION



- 8 FLAPPER MODEL 910-FA
- ROTOR MODEL 935-FA
- DRIP TUBE MODEL 608-FA
- FLUTTER MODEL 910-FA-FLTR
- NO INDICATOR MODEL 910-FA(NF) (AS SHOWN)



ASME PRESSURE / TEMP RATINGS PSIG / °F (BAR / °C)			
TEMP °F (°C)	PRESSURE		
	STEEL	316 SS	BRONZE
-20 TO 100 (-29 TO 37)	285 (19.65)	275 (18.96)	225 (15.51)
150 (66)	270 (18.61)	255 (17.58)	225 (15.51)
200 (93)	260 (17.92)	235 (16.20)	210 (14.48)
250 (121)	245 (16.89)	225 (15.51)	195 (13.44)
300 (149)	230 (15.86)	215 (14.82)	180 (12.41)
350 (177)	215 (14.82)	205 (14.13)	165 (11.38)
400 (204)	200 (13.79)	195 (13.44)	150 (10.34)
450 (232)	185 (12.76)	180 (12.41)	UNRATED
500 (260)	170 (11.72)	170 (11.72)	UNRATED

FOR TEMPERATURES ABOVE 500°F (260°C) REFER TO ASTM B16.5 FOR PRESSURE RATINGS

DIMENSIONS									
FLANGE SIZE		A (*)		B		C (**)		APPROX. WEIGHT	
IN	DN	IN	mm	IN	mm	IN	mm	LBS	KGS
1/2	15	4.62	118	1.12	28	4.00	102	6.00	2.70
3/4	20	4.62	118	1.12	28	4.00	102	6.00	2.70
1	25	5.62	143	1.25	32	4.50	114	8.00	3.60
1 1/2	40	6.50	165	2.00	51	5.88	146	15.00	6.80
2	50	7.88	200	2.00	51	6.25	152	22.00	10.00
2 1/2	65	9.38	238	3.18	81	8.50	203	44.00	20.00
3	80	9.38	238	3.18	81	8.50	203	44.00	20.00
4	100	11.00	279	4.38	111	10.50	260	67.00	30.40
6	150	14.25	362	6.88	175	14.75	343	155.00	70.30
8	200	16.12	410	8.25	210	17.50	419	230.00	104.30
10	250	24.75	630	11.00	279	24.12	613	405.00	183.70
12	300	25.75	654	11.00	279	24.12	613	460.00	208.70
14	350	26.75	679	11.00	279	27.38	695	505.00	229.00
16	400	26.75	679	11.00	279	27.38	695	555.00	257.10

(*) FOR BRONZE BODIES, REDUCE "A" DIMENSION BY .125 (3mm)
 (**) STANDARD BOLT LENGTH SHOWN. OPTIONAL WINDOW MATERIALS OR USE OF STUDS MAY INCREASE LENGTH