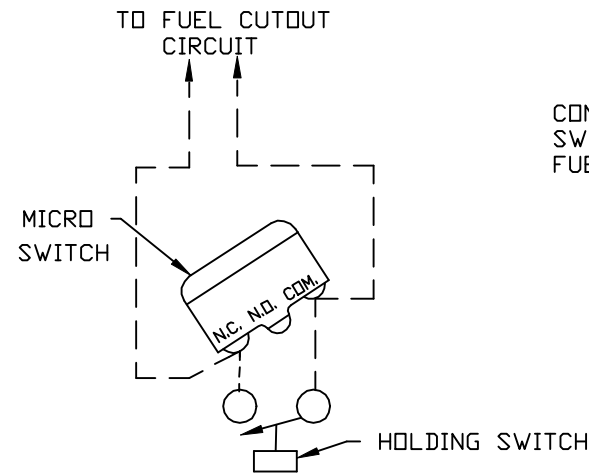


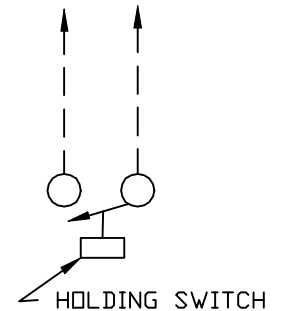
- ① CONDULET BOX
PART NO: HS-1
- ② COVER & GASKET
PART NO: HS-2
- ③ SWITCH
PART NO : HS-3
- ④ NAME PLATE
PART NO: FG40-8

FOR FLOAT TYPE LEVALARMS
(EA100 & EA102 SERIES)



FOR ELECTRODE TYPE
LEVALARMS

CONNECT TO FUEL CUTOFF
SWITCH TERMINALS OF
FUEL CUTOFF RELAY



BLOWDOWN INSTRUCTIONS:
PRESS AND HOLD THE SWITCH
BUTTON DURING BLOWDOWN IN ORDER
NOT TO INTERRUPT FUEL CUTOFF DEVICE

DIMENSIONS IN INCHES
DIMENSIONS IN [] MILLIMETERS

				UNLESS OTHERWISE NOTED:		THE CLARK-RELIANCE CORP.		MATERIAL	
				TOLERANCES (?)		STRONGSVILLE, OHIO		DRAWN LS	
				DECIMAL & STOCK (.002)		HS-0 HOLDING SWITCH		SCALE NONE	
				FIN. FRACTIONAL (UP TO 1", NOT INCL.) (.010)		FOR FUEL CUTOFF DEVICES		CHKD.	
				FIN. FRACTIONAL (1" INCL., UP TO 3") 1/64				DATE 9-23-92	
				FIN. FRACTIONAL (3" INCL., UP TO 6") 1/32				DRAWING NO.	
				FIN. FRACTIONAL (6" INCL., UP TO 12") 1/16				REV.	
				FIN. FRACTIONAL (12" & OVER) 1/8				A-10667	
				ANGLES 1?				3	
				MACHINE FINISH- 125√ OR SMOOTHER					
				REMOVE BURRS AND SHARP EDGES					
3	REDRAWN	9-23-92	LS						
REV	DESCRIPTION	DATE	SIG						
	REVISIONS								