

FEATURES



- Magnetic Actuation
- All 316SS Wetted Parts
- SPST 3A Contacts
- No O-Ring or Packing Seals
- Hermetically Sealed Switch Mechanism
- Hi or Lo Level Operation

TYPICAL APPLICATIONS

Petroleum Processing

Fuels, lubricating oils, hydraulic fluids, separators, treaters, crude oil, fuel-water interfaces.

Chemical Processing

Acids, alkalis, ammonia, paint, lacquer, peroxides, alcohols, printing inks, freon.

Food Processing

Beverages, fruit juices, cooking oils.

Pharmaceutical and Cosmetic

Liquids, emulsions, lotions, solutions.

Marine Operations

Fuel oil, hydraulic fluid, bilge level alarms, sea water, coolant, condensate levels, cargo levels.

Reactor Operation

Level control, alarm signaling.

Water Industry

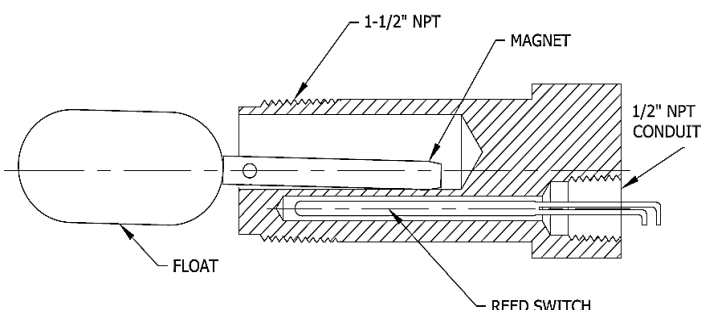
Flood control, reservoir levels.

General

Leak detection, overflow alarm, low level alarm in evaporators.

OPERATION

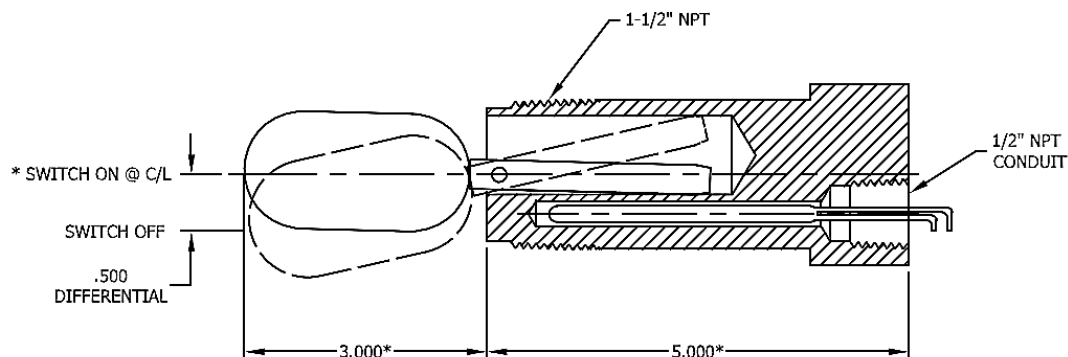
The Jerguson JMRS series float operated magnetic reed switch is designed to provide reliable low cost switching.



Utilizing a magnetically actuated reed switch to provide a contact, switching occurs when the float moves a magnet into close proximity of the reed switch. The all SST construction and hermetically sealed reed switch provides long life at a very low cost, without diaphragms or other seals that can leak.

JMRS Horizontal Mount Magnet Level Switch

DIMENSIONS AND SPECIFICATIONS



*NOMINAL SWITCH POINT @ 1.00 SG

*DIMENSIONS ARE SPECIFIC TO BASE MODEL NUMBER: JMRS 2100

PRESSURE RATING	MINIMUM SPECIFIC GRAVITY	PROCESS MAX. TEMP	CONNECTION	DIMENSION A
			1-1/2" NPT	5"
1500 PSIG	0.55	400°F/205°C	2" NPT	5-5/8"

MODEL SELECTION GUIDE

MAGNETIC REED SWITCH					
JMRS	CODE	BODY MATERIAL		TRIM MATERIAL	
	2	T-316 SST		T-316-SST	
		CODE		CODE	
		1	SPST HERMETICALLY SEALED	3 AMPS @ 120 VAC/DC	
		2	SPDT HERMETICALLY SEALED	3 AMPS @ 120 VAC/DC	
		CONNECTION		CODE	
		1 1/2"NPT, 316SS		1500 PSIG @ 100°F	
		2" NPT, 316 SS		1500 PSIG @ 100°F	
				CARBON STEEL	316SS
		2 1/2" 150# RF THREADED		11	13
		2 1/2" 300# RF THREADED		21	23
		2 1/2" 600# RF THREADED		31	33
		3" 150# RF THREADED		41	43
		3" 300# RF THREADED		51	53
		3" 600# RF THREADED		61	63
		CODE	OPTIONS		
		FEXXXX	FLOOD EXTENSION (INCHES) - CONSULT FACTORY		
		P	POLYPROPYLENE FLOAT (MAX TEMP = 250°F (121°C))		
		BW	BACK WELDED FLANGE		
JMRS	2	1	00	TYPICAL MODEL NUMBER	

JERGUSON®