

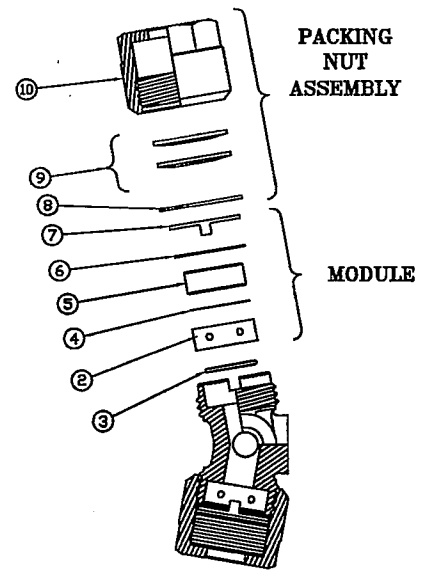
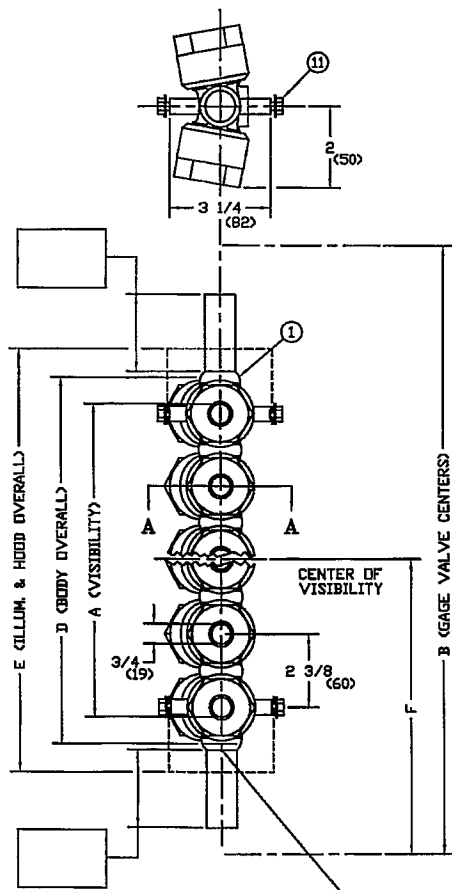
DIMENSION CHART -- STANDARD SIZES

SIMPLIPOINT PART NO.	NO. OF WINDOW UNITS	VISION A		MIN. WATER GAGE CENTERS FOR VALVE SERIES INDICATED				BODY D		E		F (MIN)			
				B		403RS 404RS		SG860 SG854				403RS 404RS		SG860 SG854	
		INCHES	MM	INCHES	MM	INCHES	MM	INCHES	MM	INCHES	MM	INCHES	MM	INCHES	MM
P4005	5	10 1/4	(260)	17 3/4	(450)	21	(533)	11 7/8	(301)	12 3/4	(323)	10 3/16	(258)	10 3/8	(263)
P4006	6	12 5/8	(320)	20 1/8	(511)	23 3/8	(593)	14 1/4	(361)	15 1/8	(384)	11 3/8	(288)	11 9/16	(293)
P4007	7	15	(381)	22 1/2	(571)	25 3/4	(654)	16 5/8	(422)	17 1/2	(444)	12 9/16	(319)	12 3/4	(323)
P4008	8	17 3/8	(441)	24 7/8	(631)	28 1/8	(714)	19	(482)	19 7/8	(504)	13 3/4	(349)	13 15/16	(354)
P4009	9	19 3/4	(501)	27 1/4	(692)	30 1/2	(774)	21 3/8	(542)	22 1/4	(565)	15 1/16	(382)	15 1/4	(387)
P4010	10	22 1/8	(561)	29 5/8	(752)	32 7/8	(835)	23 3/4	(603)	24 5/8	(625)	16 1/8	(409)	16 5/16	(414)

TO BE SPECIFIED BY CUSTOMER		
SIMPLIPOINT PART NO.	B	F
ILLUMINATOR PART NO.	HOOD PART NO.	

BILL OF MATERIAL					
ITEM	PART NO.	QTY	DESCRIPTION	MATERIAL	DWG. NO.
1	P40**	1	BODY-WELDED ASSEMBLY	STN. STL.	B-14312
2	PW-84	2	MODULE CUP	STN. STL.	PS7289-A
3	PW-90	2	SEALING GASKET	MONEL	PS7290-A
4	PW-89	2	MICA SHIELD	MICA	PS7289-A
5	PW-18	2	GAGE GLASS	GLASS	A-10419
6	PW-63	2	CUSHION GASKET	COPPER	PS7154-A
7	PW-64	2	LUG WASHER	STN. STL.	PS7155-A
8	PW-40	2	SPRING RETAINER	STN. STL.	PS7003-A
9	PW-66	4	SPRING WASHER	STN. STL.	
10	PW-65	2	PACKING NUT	STEEL	PS7156-A
11	X172125	4	HEX-WASHER HD. SCR. 5/16-18 x 1/2	STN. STL.	

- NOTES:
- * TO COMPLETE PART NO. ADD NO. OF WINDOW UNITS
 - ITEMS 2 THRU 10 FORM ONE COMPLETE ASSEMBLY OF SINGLE WINDOW UNIT
 - ITEMS 2 THRU 7 COMPRISE A REPLACEMENT PACKAGE INCLUDING THE MODULE, TO BE ORDERED AS PART NO. PW-873 (SEE EXPLODED VIEW)
 - ITEMS 8 THRU 10 COMPRISE A PACKING NUT ASSEMBLY, TO BE ORDERED AS PART NO. PW-68 (SEE EXPLODED VIEW)
 - ASSEMBLY OF ILLUMINATOR & HOOD ON GAGE REF. DWG. AB-14916



SECTION A-A
EXPLODED VIEW OF SINGLE WINDOW UNIT

ITEM	PART NO.	DWG. NO.
SIMPLIPOINT ILLUMINATORS:		
STANDARD	PI*	B-9131
WEATHERPROOF	PIW*	B-9133
EXPLOSION-PROOF	PIW*EP	B-10034
SIMPLIPOINT HOODS:		
OPEN-END WEATHERPROOF	PHOW*	1-15-62
DIRECT-VISION WEATHERPROOF	PHOW*	B-10547
PERISCOPE-WEATHERPROOF	PHPW*	B-9133
PERISCOPE-WEATHERPROOF WITH SOCKET DUCT	PHPW*S*	B-9134
PERISCOPE-WEATHERPROOF WITH FLANGED DUCT	PHPWF*	B-9134

FIGURE A
FOR NIPPLE CONNECTION (1500 PSI MAX)
(10345 KPa MAXIMUM)
DESIGN TEMPERATURE: 595°F.
312.8° C.

SCREWED FOR 0-900 WSP
WELDED FOR 901-1500 WSP

DIMENSIONS IN INCHES
DIMENSIONS IN () MILLIMETERS

PATENT NO. 3,187,573
HYDROTEST AT 2250 PSI
(15518 KPa)

REV	DESCRIPTION REVISIONS	DATE	SIG

UNLESS OTHERWISE NOTED:
TOLERANCES (G)
DECIMAL & STOCK (.002)
FIN. FRACTIONAL (UP TO 1", NOT INCL.) (.010)
FIN. FRACTIONAL (1" INCL., UP TO 3") 1/64
FIN. FRACTIONAL (3" INCL., UP TO 6") 1/32
FIN. FRACTIONAL (6" INCL., UP TO 12") 1/16
FIN. FRACTIONAL (12" & OVER) 1/8
ANGLES 1°
MACHINE FINISH- 125√ DR SMOOTHER
REMOVE BURRS AND SHARP EDGES

CLARK-RELIANCE CORP.
STRONGSVILLE, OHIO, U.S.A.

MATERIAL
SEE INDIVIDUAL PART DRAWINGS

DRAWN H.J.G.	SCALE NONE
CHKD. SA	DATE 10/22/07

DRAWING NO. PS1483-A

REV.

SIMPLIPOINT 4000 SERIES GAGE ASS'Y
0-1500 WSP