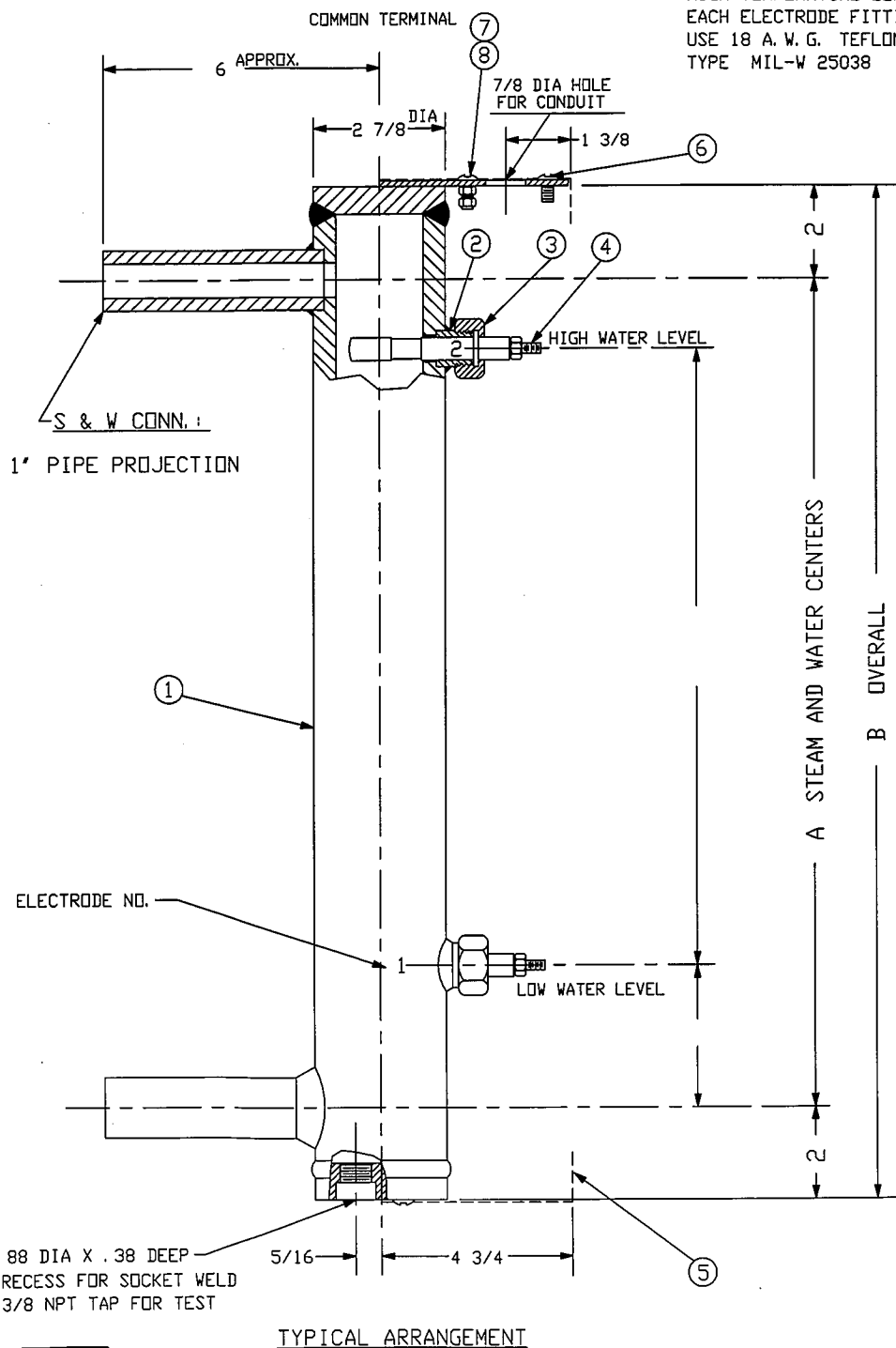


TWIP FURNISHED WITH 30-INCH,  
HIGH-TEMPERATURE LEADS CONNECTED TO  
EACH ELECTRODE FITTING  
USE 18 A. W. G. TEFLON INSULATED WIRE  
TYPE MIL-W 25038



TYPICAL ARRANGEMENT

BILL OF MATERIAL

ITEM	PART NO.	QTY.	DESCRIPTION	MATERIAL	DWG. NO.
1	ELF-1P	1	BODY, SEAMLESS STEEL PIPE	ASTM A106	
2	FSL EL5P	2	ADAPTOR		
3	FSL ZF3R	2	COUPLING NUT		
4	FSB030	2	BRAZED ELECTRODE FITTING ASSY		
5	ELF-23	1	ELECTRODE FITTING HOUSING	STN. STL.	EL7032-B
6		2	SCREW, R. H. MACH. 10-24 X 3/8	STN. STL.	
7		1	SCREW, R. H. MACH. 10-24 X 1/2	STN. STL.	
8		2	NUT, HEX 10-24	STN. STL.	

A	
B	

MODEL NO.

W. S. P. 1800-3000 P. S. I. AT 695°F.

HYDROTEST AT 4500 P. S. I.

NOTES:

- 1) CUSTOMER TO SPECIFY TYPE OF S & W CONN.
- 2) SHUTOFF VALVES SHOULD BE PLACED BETWEEN STEAM DRUM AND TWIP
- 3) W. S. P. UP TO 3000 P. S. I. HYDROTEST AT 4500 P. S. I.

THE CLARK-RELIANCE CORP.  
STRONGSVILLE, OHIO U. S. A.

MODEL NO.  
TWIP ASSEMBLY

SCALE NONE DATE 1/20/98

DRAWN BY ST

TRACED BY

CHECKED BY

NO. TDFS-2