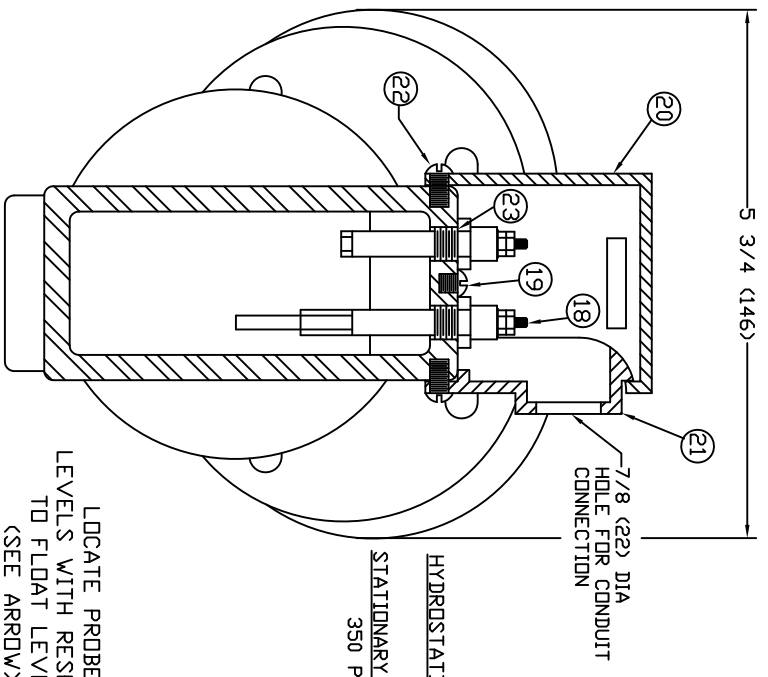


| ITEM | QTY | DESCRIPTION                             | PART NO.  | MAT. SPEC.             | DWG. NO. |
|------|-----|---|-----------|------------------------|----------|
| 1    | 1   | BODY                                    | EA100P-1  | STEEL                  | B-8837   |
| 2    | 1   | SMOOTH COVER                            | EA100-23  | MONEL B127-98          | B-8838   |
| 3    | 1   | CONNECTOR ROD ASSEMBLY                  | EA100-12  | STAINLESS STEEL 18-8   | B-8839   |
| 4    | 1   | MONNET ASSEMBLY                         | EA100-13  | ALUMINUM NICKEL PLATED | B-8838   |
| 5    | 1   | SMOOTH ASSEMBLY                         | EA100-14K | STEEL                  | B-8838   |
| 6    | 1   | SMOOTH HOUSING ASSEMBLY                 | EA100-27C | STEEL                  | B-8838   |
| 7    | 1   | LEVER PIN                               | EA100-21  | STAINLESS STEEL 18-8   | B-8839   |
| 8    | 2   | COUNTER PIN                             | EA100-17  | ALUMINUM               | B-25-49  |
| 9    | 1   | R.H. MACHINE SCREW 10 - 32 X 3/8        | X172910   | 18-8 SS                | X172910  |
| 10   | 1   | GASKET                                  | CT-5      | STEEL                  | A-8534   |
| 11   | 4   | CAP BOLT 1/2 - 13 X 2                   | CR-3M     | STEEL A193 BR B7       | A-7977   |
| 12   | 1   | FLANG                                   | EA100-15  | FIBER                  |          |
| 13   | 1   | SMOOTH INSULATOR                        | EA100-15  | STEEL                  |          |
| 14   | 2   | METALLIC DRIVE SCREW 1/4 X 1/2          | X172900   | STEEL                  |          |
| 15   | 2   | R.H. SCREW & NUT 6 - 32 X 1             | X172900   | BRASS                  |          |
| 16   | 1   | SWAGPOOF #4 LOCK WASHER                 | X174900   | STEEL                  |          |
| 17   | 2   | ELECTRONIC FITTING WITH PROBE ROD       | EA100-5T  | BRASS                  | B-8897   |
| 18   | 1   | R.H. COMMON CONDUIT SCREW 12 - 24 X 1/2 | X172900   | ALUMINUM               | B-8897   |
| 19   | 1   | ELECTRONIC FITTING HOUSING              | EA100-18  | ALUMINUM               | B-8897   |
| 20   | 1   | CONDUIT BRACKET                         | EA196-22  | ALUMINUM               | B-8897   |
| 21   | 2   | R.H. MACHINE SCREW 12 - 24 X 1/2        | EA17-7    | STEEL                  |          |
| 22   | 1   | ELECTRONIC GASKET                       | WGP-13    | COPPER                 |          |
| 23   | 4   | HEAVY HEX NUT 1/2 - 13                  | X171801   | STEEL A194 GR. 2H      |          |

B/M NOTE 1.FOR APPLICATION ILLUSTRATED IN FIG.4

- USE EA100P-1-2 BODY,
- DELETE ITEM NO. 25 AND
- DOUBLE ITEM NO. 18 & 23
- 2. FOR ALL OTHER ILLUSTRATED APPLICATIONS(FIG. 1, 2, & 3),
- USE EA100P-1-1 BODY AND DELETE ITEM NO. 26

NOTES:  
 1.MICRO SWITCH, TYPE BZ-2RW8244-42  
 UNDERWRITER APPROVED  
 FOR THE FOLLOWING RATINGS:  
 5A-125,250, OR 480 VAC  
 1/2A-125 VDC  
 1/4A-250 VDC

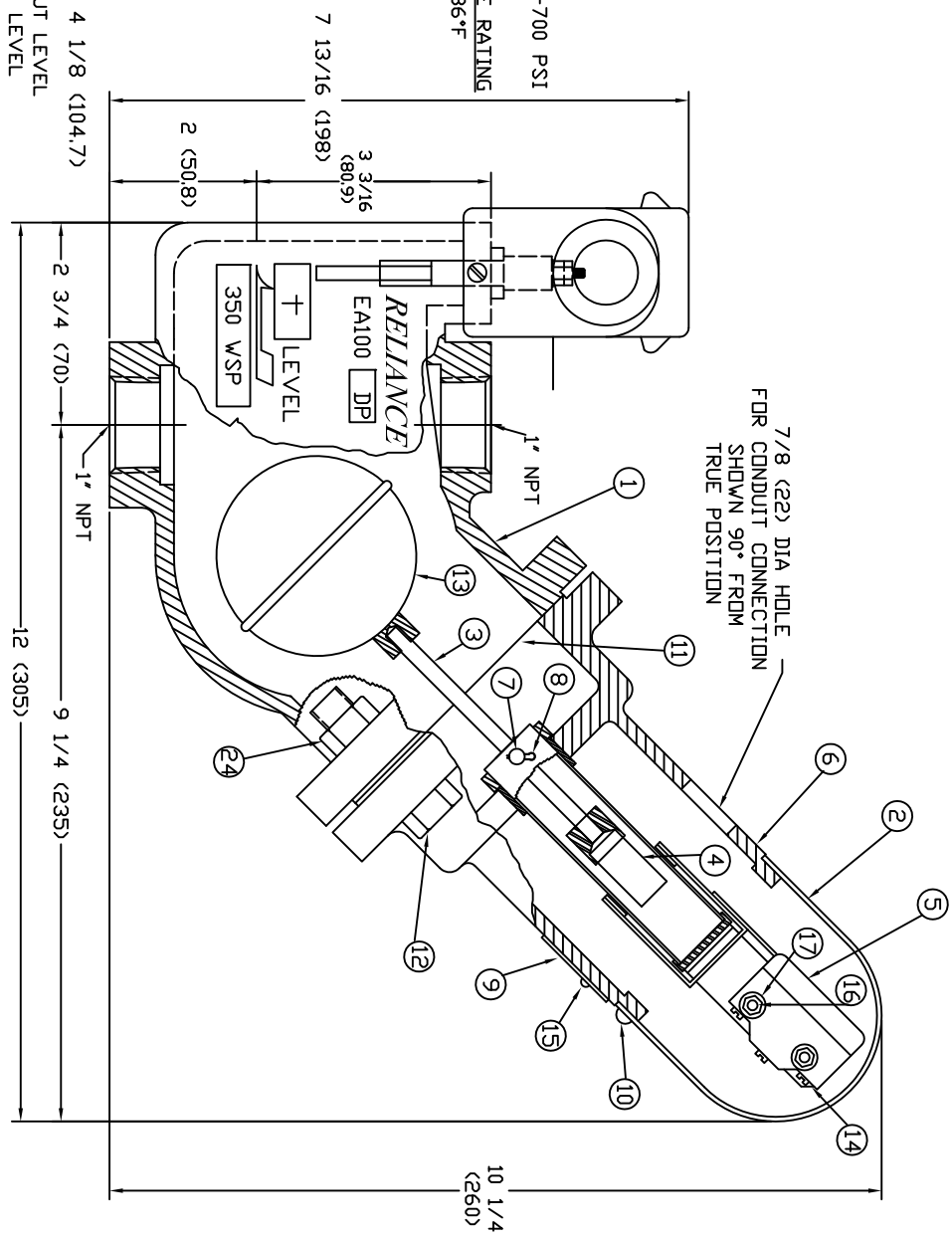


REAR CUTAWAY VIEW  
 SHOWING PROBES IN BODY

HYDROSTATIC TEST - 700 PSI  
 STATIONARY SERVICE RATING  
 350 PSI AT 436°F

LOCATE PROBE  
 LEVELS WITH RESPECT  
 TO FLOAT LEVEL  
 (SEE ARROW)

MAXIMUM PROBE LENGTH - 4 1/8 (104.7)  
 +STAMP FC-FDR FUEL CUTOFF LEVEL  
 LA-FDR LDW ALARM LEVEL



MANUFACTURED BY  
**Clark-Reliance**  
 16633 FOLTZ PARKWAY  
 STRONGSVILLE, OH 44149 USA  
 PH: 440-572-1500  
 WEB: www.clarkreliance.com

**CLARK-RELIANCE**  
 EA100DP LEVALARM  
 ASSEMBLY

PART NUMBER: REA100DP  
 TOLERANCE CLASS (PER PES-004):  
 MATERIAL:  
 REVISION: REDRAWN, NO CHANGE  
 DRAWN: CG  
 CHECKED:  
 DATE: 8/17/10  
 REV: 15