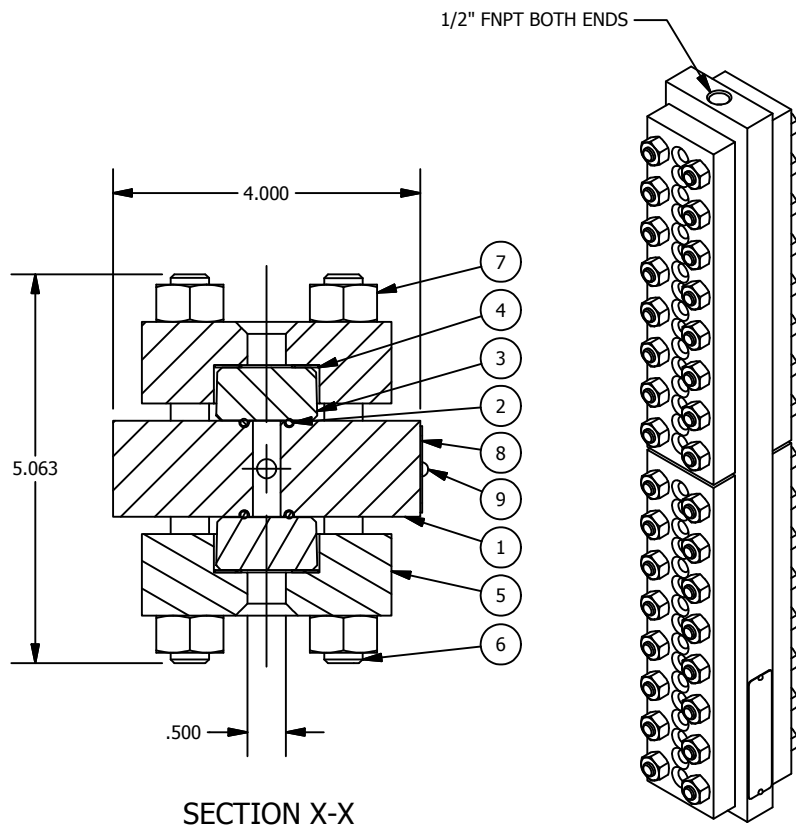


BILL OF MATERIAL					
NO.	NAME OF PART	QTY.	MATERIAL	PART NO.	SPECIFICATION
1	CHAMBER	1	CARBON STEEL	V9462 __ A6	A108
2	GASKET	2 PER VISION PORT	VITON	G149	
3	GLASS	2 PER SECT.	TEMPERED	V16758 _	
4	CUSHION	2 PER SECT.	IFG5500	V18980 _	
5	COVER	2 PER SECT.	CARBON STEEL	V9461 _ B	A108
6	STUD	SEE CHART	CARBON STEEL	P4982 B71	A193 GR.B7
7	NUT	SEE CHART	CARBON STEEL	X171510	A194 GR.2H
8	RATING TAG	1	304SS	V22353	
9	DRIVE SCREW	2	ZINC	X173260	



- NOTES:
- GAGES W/ CARBON STEEL OR 316SS CHAMBERS ARE RATED FOR 10,000 PSI @ 400°F.
 - STANDARD GAGES FURNISHED W/ 1/2" NPT ENDS ARE RATED FOR 6,000 PSI @ 400°F. FOR WORKING PRESSURES OVER 6,000 PSI, GAGES W/ SOCKETS FOR WELDING ARE RECOMMENDED.
 - OTHER O-RING COMPOUNDS ARE AVAILABLE.
 - STATE MAXIMUM WORKING PRESSURE AND TEMPERATURE WHEN ORDERING.
 - STANDARD FACTORY HYDROTEST PRESSURE IS 1.5 TIMES RATED GAGE GLASS PRESSURE.

SIZE NO.	QTY. PER SECT.		DIM. "C" IN INCHES	DIM. "D" IN INCHES	NUMBER OF SECTIONS								
	STUD	NUT			DIMENSION "B" IN INCHES								
					1	2	3	4	5	6	7	8	9
1	6	12	3.625	1.625	3.625	8.875	14.125	19.375	24.625	29.875	35.125	40.375	45.625
2	6	12	4.438	1.813	4.438	10.688	16.938	23.188	29.438	35.688	41.938	48.188	54.438
3	8	16	5.250	2.000	5.250	12.500	19.750	27.000	34.250	41.500	48.750	56.000	63.250
4	10	20	6.063	2.188	6.063	14.313	22.563	30.813	39.063	47.313	55.563	63.813	72.063
5	10	20	7.688	1.688	7.688	17.063	26.438	35.813	45.188	54.563	63.938	73.313	82.688
6	12	24	8.500	2.125	8.500	19.125	29.750	40.375	51.000	61.625	72.250	82.875	93.500
7	14	28	10.125	1.625	10.125	21.875	33.625	45.375	57.125	68.875	80.625	92.375	104.125
8	16	32	11.750	1.625	11.750	25.125	38.500	51.875	65.250	78.625	92.000	105.375	118.750
9	16	32	12.563	1.563	12.563	26.688	40.813	54.938	69.063	83.188	97.313	111.438	125.563

MANUFACTURED BY
Clark-Reliance®
 16633 FOLTZ PARKWAY
 STRONGSVILLE, OH 44149 USA
 (440) 572-1500 | www.clarkreliance.com
 © Clark-Reliance® Corporation. All Rights Reserved.

JERGUSON®
 SERIES T-51 GAGES
 1/2" NPT END CONN.

DRAWN: TJP
 CHECKED: MK
 DATE: 3/15/2017
 REVISION: 13
 DRAWING NO.: **51-40**
 REV.: **13**