

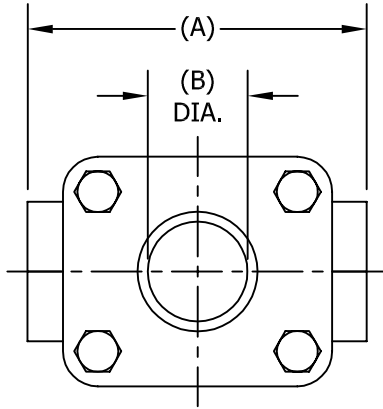
THIS DRAWING AND ALL INFORMATION ON IT IS THE PROPERTY OF THE CLARK-RELIANCE CORPORATION. IT IS CONFIDENTIAL AND IS GIVEN TO YOU FOR A LIMITED PURPOSE AND MUST BE RETURNED UPON REQUEST. NEITHER THIS DRAWING NOR ANY PART OF IT NOR ANY INFORMATION CONCERNING IT MAY BE COPIED, EXHIBITED OR FURNISHED TO OTHERS NOR MAY PHOTOGRAPHS BE TAKEN OF ANY ARTICLE FABRICATED OR ASSEMBLED FROM THIS DRAWING WITHOUT CONSENT OF THE CLARK-RELIANCE CORPORATION.



JACOBY-TARBOX[®]
 A Product of the Clark-Reliance Corporation
 16633 FOLTZ PARKWAY
 STRONGSVILLE, OH 44149 USA
 PH: +1 440-572-1500
 www.clark-reliance.com

**SIGHT FLOW INDICATOR
 MODEL 100-SA, 200-SA, 300-SA
 ASME CLASS 150 SERVICE**

SECTION: T400
 BULLETIN: T400.16
 DATE: 03/04/11
 SUPERSEDES: 12/29/04
 FILE NO.: T400-16.DWG
 DRAWN: FWK | CHECKED: DEP
 SCALE: NONE




PARTS LIST			
PIECE NO.	PART NAME	QTY.	STANDARD DESIGN MATERIALS
1	BODY (SEE NOTE (1))	1	ASTM A216-WCB (CARBON STEEL) ASTM A351-CF8M (316 SS) ASTM B62 (BRONZE)
2	RETAINER (1)	2	ASTM A216-WCB (CARBON STEEL) ASTM A516 GR.70 (CARBON STEEL)
3	BOLT (1)	4	ASTM A354-BD (ALLOY STEEL)
4	NUT (1)	4	ASTM A194-2H (ALLOY STEEL)
5	WINDOW (2)	2	TEMPERED BOROSILICATE
6	SEAL GASKET (3)	2	NEOPRENE
7	CUSHION GASKET	2	FIBER
8	INDICATOR	1	FLAPPER (316SS) DRIP TUBE (316SS) ROTOR (PTFE) FLUTTER (PTFE)

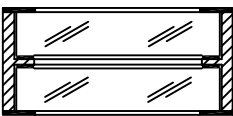

NOTES (REFERENCE PARTS LIST)

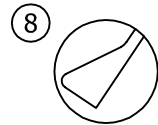
(1) ADDITIONAL ALLOYS AVAILABLE PER REQUEST
 (2) a. OPTIONAL MATERIALS AVAILABLE PER PROCESS CONDITIONS
 b. ADDITIONAL WINDOW OPTIONS AVAILABLE SEE SIDE SECTION FOR DETAILS
 (3) COMMON OPTIONAL SEAL MATERIALS AVAILABLE
 PTFE GRAPHITE FIBER

DESIGNED IN ACCORDANCE WITH ASME B31.1 & B31.3 FOR PRESSURE VERSUS TEMPERATURE RATINGS USING ONLY LISTED METALS IN FABRICATION

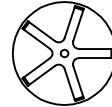
(2) b.  UNIGLAS WINDOW

 DUAL UNIGLAS WINDOW

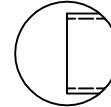
 FULL VIEW DUAL WINDOW
  APPROVED



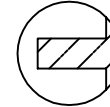
FLAPPER
 MODEL 100-SA



ROTOR
 MODEL 300-SA

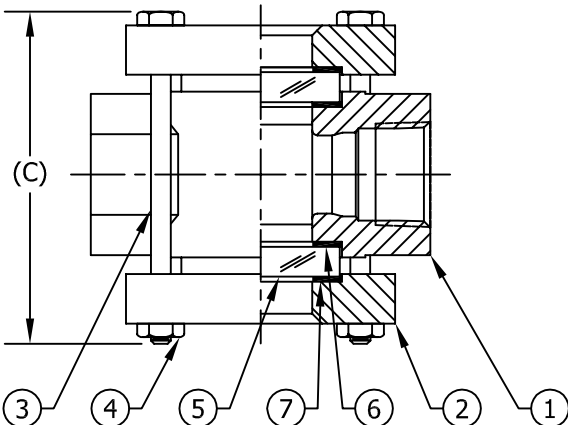


DRIP TUBE
 MODEL 200-SA



FLUTTER
 MODEL 100-SA-FLTR

NO INDICATOR
 MODEL 100-SA(NF)
 (AS SHOWN)



ASME PRESSURE / TEMP RATINGS			
PSIG / °F (BAR / °C)			
TEMP °F (°C)	PRESSURE		
	STEEL	316 SS	BRONZE
-20 TO 100 (-29 TO 37)	285 (19.65)	275 (18.96)	225 (15.51)
150 (66)	270 (18.61)	255 (17.58)	225 (15.51)
200 (93)	260 (17.92)	235 (16.20)	210 (14.48)
250 (121)	245 (16.89)	225 (15.51)	195 (13.44)
300 (149)	230 (15.86)	215 (14.82)	180 (12.41)
350 (177)	215 (14.82)	205 (14.13)	165 (11.38)
400 (204)	200 (13.79)	195 (13.44)	150 (10.34)
450 (232)	185 (12.76)	180 (12.41)	UNRATED
500 (260)	170 (11.72)	170 (11.72)	UNRATED

FOR TEMPERATURES ABOVE 500°F (260°C) REFER TO ASTM B16.5 FOR PRESSURE RATINGS

DIMENSIONS								
NPT SIZE	A		B		C (*)		APPROX. WEIGHT	
	IN	mm	IN	mm	IN	mm	LBS	KGS
1/4	3.00	76	0.84	21	3.50	89	5.00	2.30
3/8	3.00	76	0.84	21	3.50	89	5.00	2.30
1/2	3.75	95	1.25	32	4.00	102	6.00	2.70
3/4	3.75	95	1.25	32	4.00	102	6.00	2.70
1	4.25	108	1.25	32	4.50	114	8.00	3.60
1 1/4	5.50	140	2.00	51	5.75	146	13.00	5.90
1 1/2	5.50	140	2.00	51	5.75	146	13.00	5.90
2	6.25	159	2.00	51	6.75	171	19.00	8.60

(*) STANDARD BOLT LENGTH SHOWN. OPTIONAL WINDOW MATERIALS OR USE OF STUDS MAY INCREASE LENGTH