



the pressure equipment safety authority

9410 - 20 Ave N.W.  
Edmonton, Alberta, Canada T6N 0A4  
Tel: (780) 437-9100 / Fax: (780) 437-7787

July 10, 2013

**Attention:** Tanya Francis  
TECHNICAL STANDARDS & SAFETY AUTHORITY  
3300 BLOOR STREET WEST  
14 FLOOR CENTRE TOWER  
TORONTO, ON M8X 2X4

The design submission, tracking number 2013-04320, originally received on June 11, 2013 was surveyed and accepted for registration as follows:

**CRN :** 0H16066.52

**Accepted on:** July 10, 2013

**Reg Type:** New Design

**Expiry Date:** June 05, 2023

**Drawing No. :** CATALOG-STEEL WATER COLUMNS

**Fitting type:** 5" STEEL WATER COLUMNS

Design registered in the name of : CLARK-RELIANCE CORPORATION

Description	MAWP	Design Temperature
MODEL W0350	2413 kPa	224 <sup>o</sup> C
MODEL W0450	3103 kPa	238 <sup>o</sup> C
MODEL W0600	4137 kPa	254 <sup>o</sup> C
MODEL W0900	6205 kPa	279 <sup>o</sup> C
MODEL W1100	7584 kPa	292 <sup>o</sup> C
MODEL W1250	8618 kPa	301 <sup>o</sup> C
MODEL W1500	10342 kPa	314 <sup>o</sup> C
MODEL W1800	12411 kPa	328 <sup>o</sup> C
MODEL W2500	17237 kPa	354 <sup>o</sup> C
MODEL W3000	20684 kPa	369 <sup>o</sup> C

**The registration is conditional on your compliance with the following notes:**

TSSA SR# 1124862

- This registration has been issued:
- 1. Based on TSSA's review.
- 2. Based on the Association of Chief Inspectors Policy on Reciprocal Recognition of Design Review for Vessel Design Registration of August 1997.

*This registration is valid only for fittings fabricated at the location(s) covered by the QC certificate attached to the accepted AB-41 Statutory Declaration form. This registration is valid only until the indicated expiry date only if the Manufacturer maintains a valid quality management system approved by an acceptable third-party agency until that date. Should the approval of the quality management system lapse before the expiry date indicated above, this registration shall become void.*



the pressure equipment safety authority

9410 - 20 Ave N.W.

Edmonton, Alberta, Canada T6N 0A4

Tel: (780) 437-9100 / Fax: (780) 437-7787

---

July 10, 2013

An invoice covering survey and registration fees will be forwarded from our Revenue Accounts.

Enclosed are stamped prints for your reference.

Sincerely,

*Zana Radisavljevic*

RADISAVLJEVIC, ZANA, R.E.T.



the pressure equipment safety authority

STATUTORY DECLARATION
Registration of Fittings

In this space, show facsimile of manufacturer's logo or trademark as it will appear on the fitting.
Clark-Reliance

I, Steven McGuigan,
Research and Development Manager
(company title, e.g. vice president, plant manager, chief engineer) (must be in a position of authority)
of Clark-Reliance
(name of manufacturer)

located at 16633 Foltz Parkway, Strongsville, OH 44149 USA
(plant address)

do solemnly declare that the fittings listed hereunder, which are subject to the Safety Codes Act (check one)

- comply with the requirements of ASME Boiler Code, Section 1 which specifies the dimensions, materials of construction, pressure/temperature ratings and identification marking of the fittings, or
are not covered by the provisions of a recognized North American standard and are therefore manufactured to comply with as supported by the attached data which identifies the dimensions, materials of construction, pressure/temperature ratings and the basis for such ratings, and the marking of the fittings for identification.

I further declare that the manufacture of these fittings is controlled by a quality control program which has been verified by the following authority, HSB (Harford Steam Boiler) as being suitable for the manufacture of these fittings to the stated standard. The fittings covered by this declaration, for which I seek registration, are Category H

In support of this application, the following information, calculations and/or test data are attached:
See Model Code and Index of Attachment Sheet for detail of attachments

DECLARED before me at Clark-Reliance in the State of Ohio
this 22 day of March, 2013
(print) Christine McCombs
(sign) Christine McCombs
(A Commissioner for Oaths)
Signature of Applicant: [Signature]
CHRISTINE MCCOMBS
NOTARY PUBLIC, LORAIN COUNTY, OHIO
MY COMMISSION EXPIRES 9 JULY 2015

For Office Use Only
To the best of my knowledge and belief, the application meets the requirements of the Safety Codes Act and CSA Standard B51, Clause 4.2, and is accepted for registration in Category H
Registration Number: OH 16066.52
Date Registered: JUL 10 2013
(For the Administrator/Chief Inspector of Alberta)
Expiry Date: JUL 5, 2013

# Clark-Reliance Model Code(s) for CRN Category H

## Water Columns:

This submittal covers the following models for water columns—Model number extension (-####) designated by number of probes and probe type, specified by the customer.

- W0350-#### Series (Drawings WC350 and WC350W)
- W0450-#### Series (Drawings WC450 and WC450W)
- W0600-#### Series (Drawings WC600 and WC600W)
- W0900-#### Series (Drawings WC900 and WC900W)
- W1100-#### Series (Drawings WC1100 and WC1100W)
- W1250-#### Series (Drawings WC1250 and WC1250W)
- W1500-#### Series (Drawings WC1500 and WC1500W)
- W1800-#### Series (Drawings WC1800 and WC1800W)
- W2500-#### Series (Drawings WC2500 and WC2500W)
- W3000-#### Series (Drawings WC3000 and WC3000W)

0H16066.52

SAFETY CODES ACT - PROVINCE OF ALBERTA	
REGISTRATION OF FITTINGS	
REGISTRATION NO.	0H16066.52
DWG. NO or CAT NO	As listed
TYPE OF FITTINGS	5" Water Column
Date	10 2013
INITIALS	ZANA R.
ZANA RADISAVLJEVIC, R.E.T. DESIGN SURVEY	

Size, pressure/temperature ratings, material specification, and wall thicknesses designated by drawings as listed above.

Weld map specifications are designated by drawings with "W" extension as listed above.

Pressure calculations for all components in the above drawings are attached.

0H16066.52

## Index of Attachments

<u>Description</u>	<u># of pages</u>
National Registration Application for Fittings, Category H	1
(2) Notarized TSSA Statutory Declarations	1 ea
(2) Uniform Statutory Declaration	1 ea
(2) ABSA Statutory Declarations	1 ea
(6) ISO9001 Certificates	1 ea
(6) CSA-B51-09 Certificates	1 ea

## Water Columns

<u>Description</u>	<u># of pages</u>
(7) Water Columns Bulletins	7 ea
(7) Water Columns Drawing Packages	24 ea
(7) Weld Procedure 1-1-101	4 ea
(7) Weld Procedure 1-1-102	6 ea
(7) Calculations Package	4 ea

THIS IS PART OF  
CRN 0H16066.5  
Technical Standards & Safety Authority  
Boilers & Pressure Vessels  
Safety Program



345 Carlingview Drive  
Toronto, Ontario  
CANADA M9W 6N9  
Tel.: 416.734.3300  
Fax.: 416.231.1626  
Toll Free: 1.877.682.8772  
[www.tssa.org](http://www.tssa.org)

August 28, 2017

STEVEN MCGUIGAN  
CLARK-RELIANCE CORP  
16633 FOLTZ INDUSTRIAL PKWY  
STRONGSVILLE OH 44149  
US

Service Request Type.: BPV-National AB  
Service Request No.: 2108976  
Your Reference No.: EA100G  
Registered to.: CLARK-RELIANCE CORP

Dear STEVEN MCGUIGAN,

Please find enclosed the original response from AB, registered under the CRN No.: 0H16066.52.

As all jurisdictional fees are handled by the Technical Standards and Safety Authority (TSSA), you do not pay any jurisdictions directly.

Should you have any questions or require further assistance, I will be happy to assist you. For general enquiries, please contact a Customer Service Advisor at 1.877.682.TSSA (8772) or e-mail [customerservices@tssa.org](mailto:customerservices@tssa.org). When contacting TSSA regarding this file, please refer to the Service Request number provided above.

Yours truly,

Joanna Karpinski

Tel: 416-734-3377  
Fax: 416-231-6183  
Email: [jkarpinski@tssa.org](mailto:jkarpinski@tssa.org)

August 03, 2017

**Attention:** Tanya Francis  
TECHNICAL STANDARDS & SAFETY AUTHORITY  
345 CARLINGVIEW DRIVE  
TORONTO, ON M9W 6N9

**Email:** tfrancis@tssa.org

The design submission, tracking number 2017-04075, originally received on July 04, 2017 was surveyed and accepted for registration as follows:

**CRN :** 0H16066.52 **Accepted on:** August 03, 2017  
**Reg Type:** Addition to Acc. Fitting **Expiry Date:** June 05, 2023  
**Drawing No. :** EA7197/7198, EA7199/7200, EA7201/7202 Rev 1, 0, 0 As Noted  
**Fitting type:** EA100G LEVELALARM  
Design registered in the name of : CLARK-RELIANCE CORPORATION

**The registration is conditional on your compliance with the following notes:**

- The scope of registration is EA100G Levelalarm, Class 150, 300, 600.
- It is our understanding that a hydrostatic test pressure shall be per ASME Section I for the MAWP per B16.5 Group 1.1 150/300/600 class flange.

As indicated on AB-41 Statutory Declaration form and submitted documentation, the code of construction is SECTION I.

This registration is valid only for fittings fabricated at the location(s) covered by the QC certificate attached to the accepted AB-41 Statutory Declaration form.

This registration is valid only until the indicated expiry date and only if the Manufacturer maintains a valid quality management system approved by an acceptable third-party agency until that date.

Should the approval of the quality management system lapse before the expiry date indicated above, this registration shall become void.

An invoice covering survey and registration fees will be forwarded from our Revenue Accounts.

Enclosed are stamped prints for your reference.

Sincerely,



STOJANOVIC, STEVAN, P. Eng.  
DOP Cert. No. D00008849



the pressure equipment safety authority

STATUTORY DECLARATION
Registration of Fittings



I, Steve R McGuigan,
Research and Development Manager
(company title, e.g. vice president, plant manager, chief engineer) (must be in a position of authority)
of Clark-Reliance Corporation
(name of manufacturer)

located at 16633 Foltz Parkway, Strongsville, OH 44149
(plant address)

do solemnly declare that the fittings listed hereunder, which are subject to the Safety Codes Act
(check one)

- comply with the requirements of ASME Boiler Code, Section I which specifies the dimensions,
(title of recognized North American Standard)
materials of construction, pressure/temperature ratings and identification marking of the fittings, or
are not covered by the provisions of a recognized North American standard and are therefore manufactured to
comply with as supported by the attached data which identifies the dimensions,
materials of construction, pressure/temperature ratings and the basis for such ratings, and the marking of the fittings
for identification.

I further declare that the manufacture of these fittings is controlled by a quality control program which has been verified by the
following authority, Harford Steam Boiler (HSB) as being suitable for the manufacture of these fittings to the
stated standard. The fittings covered by this declaration, for which I seek registration, are Category H

In support of this application, the following information, calculations and/or test data are attached:
See Model Code and Index of Attachment Sheet for detail of attachments

DECLARED before me at CLARK Reliance in the State of OHIO
this 13th day of October, 2016
(print) Christine McCombs
(sign) Christine McCombs
(A Commissioner for Oaths)
[Signature of Applicant]
Christine McCombs
Notary Public, State of Ohio
My Commission Expires July 9, 2020

For Office Use Only

To the best of my knowledge and belief, the application meets the requirements of the Safety Codes Act and CSA Standard
B51, Clause 4.2, and is accepted for registration in Category #

Registration Number: OH 16066.52

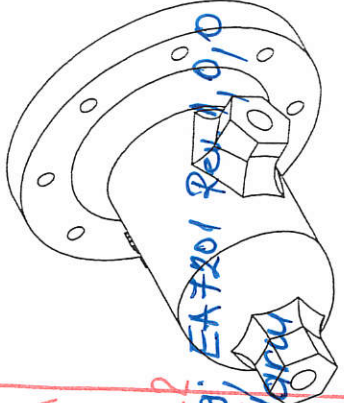
STEVAN STOJANOVIC

Date Registered: AUG 03 2017

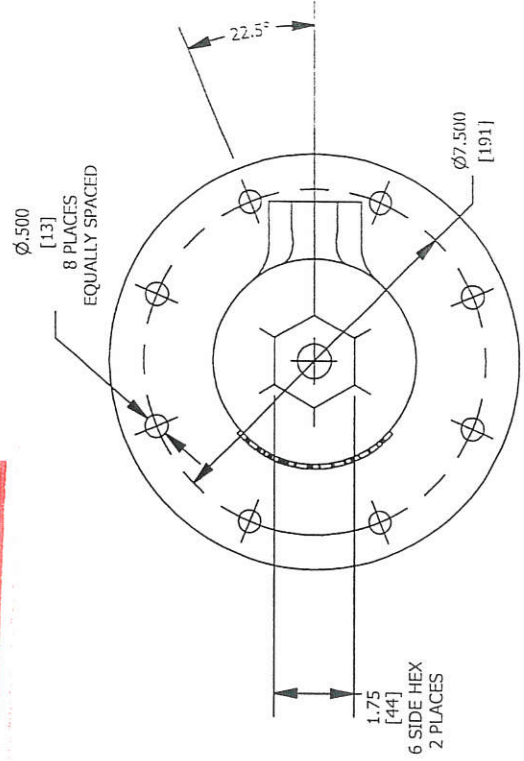
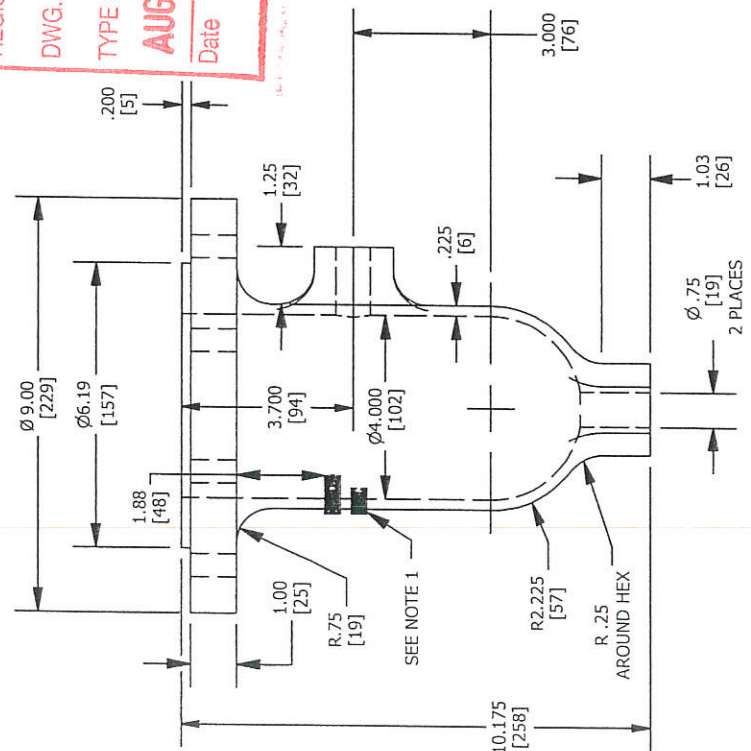
(For the Administrator/Chief Inspector of Alberta)
Expiry Date: June 05, 2023

1	9/29/2016	BODY: CASTING: 4" 150#, NEW RELEASE CDC 15-112	DMB
0	5/27/2015	ENGINEERING PROTOTYPE	DMB
REV	DATE	REVISION	BY

**ADSA**  
**SAFETY CODES ACT - PROVINCE OF ALBERTA**  
**REGISTRATION OF FITTINGS**  
 REGISTRATION NO. **0H16066.52**  
 DWG. NO. or CAT. NO. **EA7197, EA7199, EA7201 Rev 0, 010**  
 TYPE OF FITTINGS **EA 100G Level Alarm**  
**AUG 03 2017** INITIALS **StS**  
 Date  
 STEVAN STOJANOVIC, P.Eng.  
 DESIGN SURVEY ENGINEER



NOTES:  
 1) CAST THE FOLLOWING LETTERING ON NON-MACHINED SURFACES.  
 A) CLARK-RELIANCE  
 B) LEVELALARM  
 C) APPLICABLE HEAT NO.  
 2) FILLETS & ROUNDS .03R U.O.N.  
 3) CASTING MASS: 23.8 LBM.



MANUFACTURED BY  
**Clark-Reliance®**  
 16633 FOLTZ PARKWAY  
 STRONGSVILLE, OH 44149 USA  
 (440) 572-1500 | www.clarkreliance.com  
 © Clark-Reliance® Corporation. All Rights Reserved.

**CLARK-RELIANCE®**  
 BODY: CASTING: 4" 150#

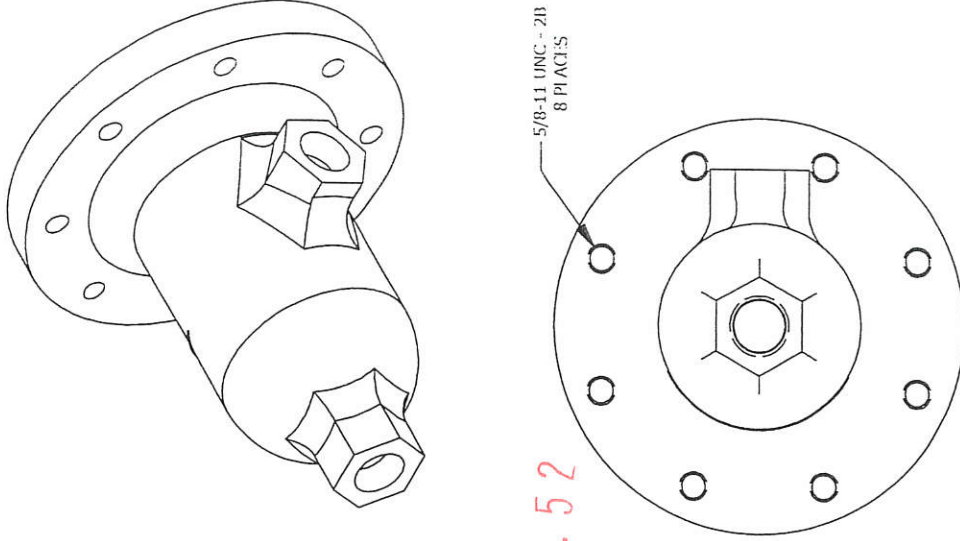
PART NUMBER: REA7197
TOLERANCE CLASS (PER PES-004): B
MATERIAL: A216 WCB
REVISION: 1 15-112 4/13/2015 DMB
DRAWN: DMB
CHECKED: SRM
DATE: 2/21/2014
DRAWING NO.: EA7197
REV.: 1



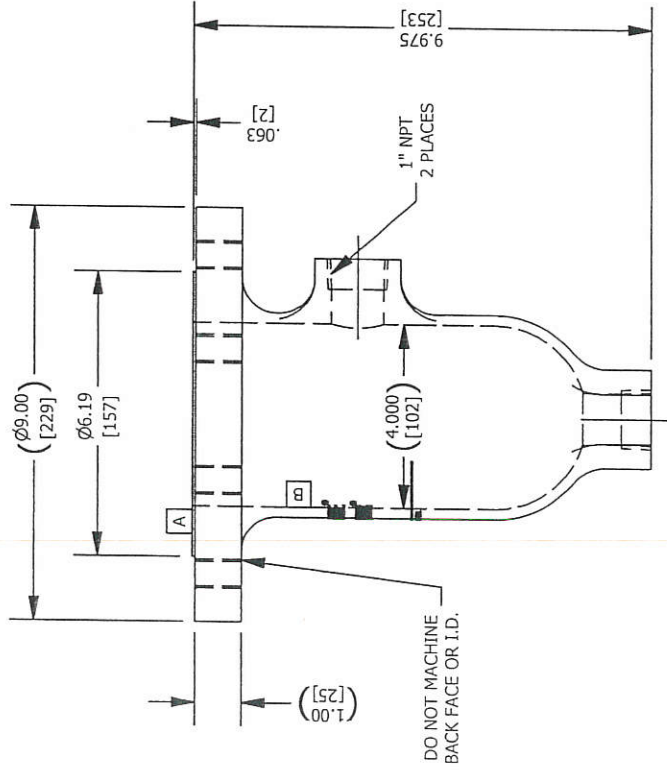
1	9/29/2016	BODY: 4"; 150#; EA100G, NEW RELEASE; CDC: 15-117	DMB
0	5/27/2015	FIRST ENGINEERING PROTOTYPE	DMB
REV	DATE	REVISION	BY

NOTES:

- 1) CASTING PER DRAWING EA7197.
- 2) FACES "A" AND "B"  $\perp$  WITHIN .031.
- 3) FACE "A" FLAT WITHIN .005.
- 4) FLANGE FACE TO BE SERRATED PER ANSI B16.5.



OH16066.52



DO NOT MACHINE  
BACK FACE OR I.D.

MANUFACTURED BY  
**Clark-Reliance®**  
 16633 FOLTZ PARKWAY  
 STRONGSVILLE, OH 44149 USA  
 (440) 572-1500 | www.clarkreliance.com  
 © Clark-Reliance® Corporation. All Rights Reserved.

CLARK-RELIANCE®

BODY: 4"; 150#; EA100G

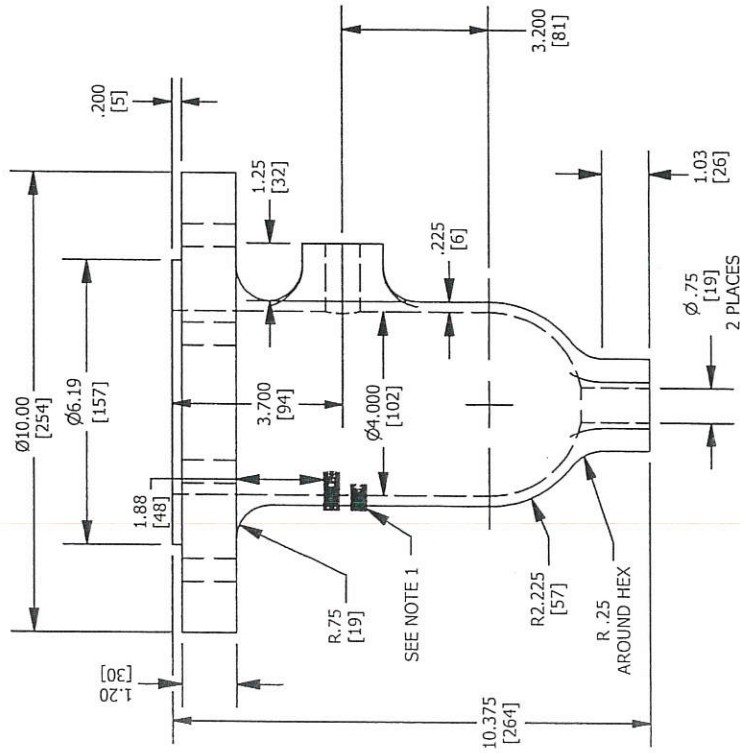
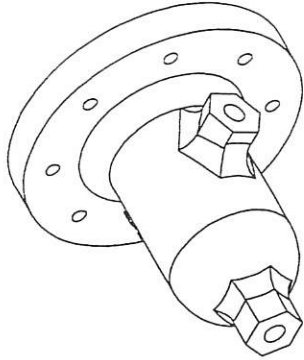
PART NUMBER: REA7198  
 TOLERANCE CLASS (PER PES-004): B  
 MATERIAL: A216 WCB  
 REVISION: 1 15-115 4/13/2015 DMB  
 DRAWN: DMB DRAWING NO.: EA7198  
 CHECKED: SRM  
 DATE: 2/21/2014

REV: 1

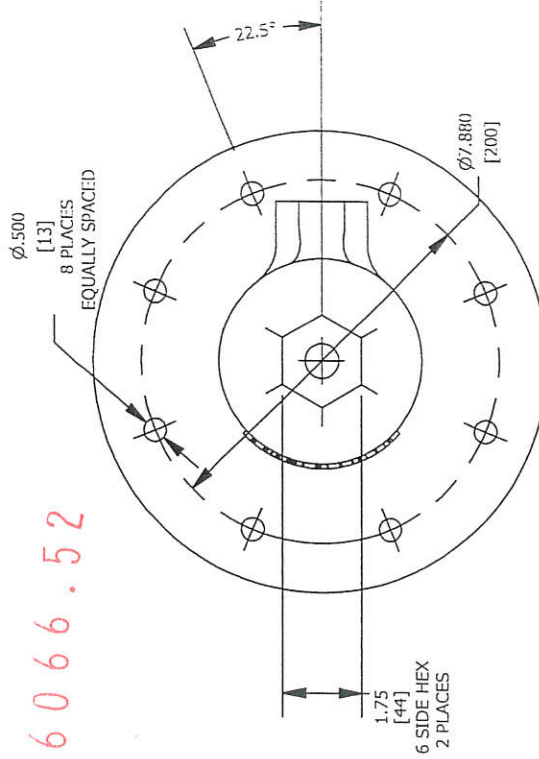
0	REV	DATE	9/29/2016	BODY: CASTING: 4" : 300#	DMB
				REVISION	BY

NOTES:  
 1) CAST THE FOLLOWING LETTERING ON NON-MACHINED SURFACES.  
 A) CLARK-RELIANCE  
 B) LEVELALARM  
 C) APPLICABLE HEAT NO.

- 2) FILLETS & ROUNDS .03R U.O.N.
- 3) CASTING MASS: 31.7 LBM.



OH16066.52



MANUFACTURED BY  
**Clark-Reliance®**  
 16633 FOLTZ PARKWAY  
 STRONGSVILLE, OH 44149 USA  
 (440) 572-1500 | www.clarkreliance.com  
 © Clark-Reliance® Corporation. All Rights Reserved.

**CLARK-RELIANCE®**

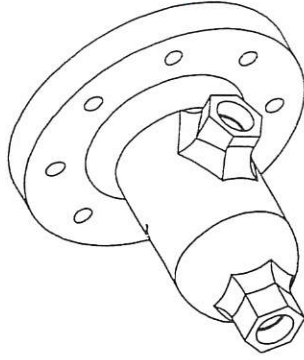
BODY: CASTING: 4" : 300#

PART NUMBER: REA7199
TOLERANCE CLASS (PER PES-004): B
MATERIAL: AZ16 WCB
REVISION: 0 15-112 4/13/2015 DMB
DRAWN: DMB
CHECKED: SRM
DATE: 2/21/2014
DRAWING NO.: EA7199
REV.: 0

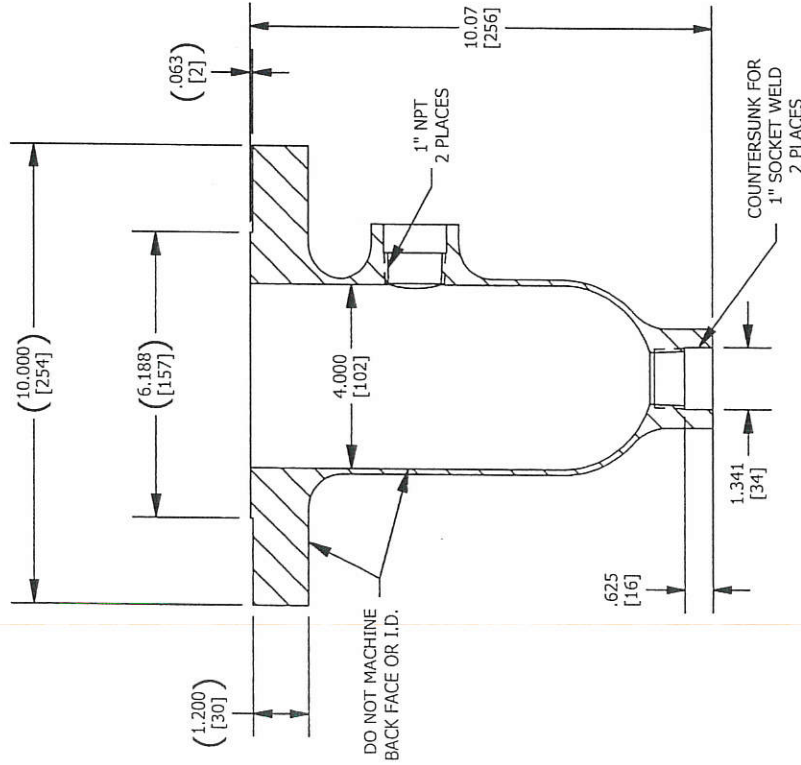
0	9/28/2016	BODY: 4": 300#: EA100G	DMB
REV	DATE	REVISION	BY

NOTES:

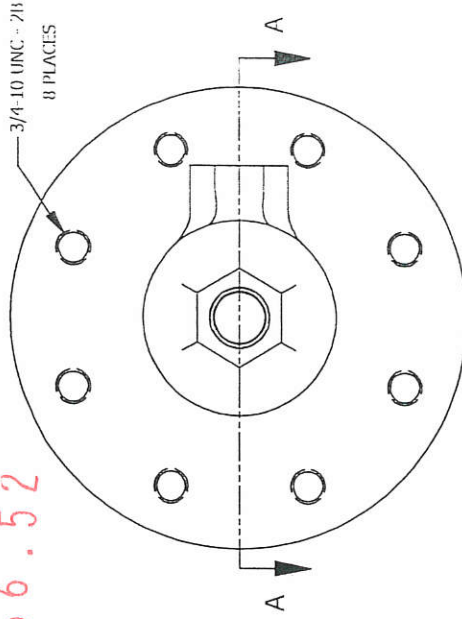
- 1) CASTING PER DRAWING EA7199.
- 2) FACES "A" AND "B"  $\perp$  WITHIN .031.
- 3) FACE "A" FLAT WITHIN .005.
- 4) FLANGE FACE TO BE SERRATED PER ANSI B16.5.



OH16066.52



SECTION A-A  
SCALE 1 / 4



MANUFACTURED BY  
**Clark-Reliance®**  
 16633 FOLTZ PARKWAY  
 STRONGSVILLE, OH 44149 USA  
 (440) 572-1500 | www.clarkreliance.com  
 © Clark-Reliance® Corporation. All Rights Reserved.

CLARK-RELIANCE®

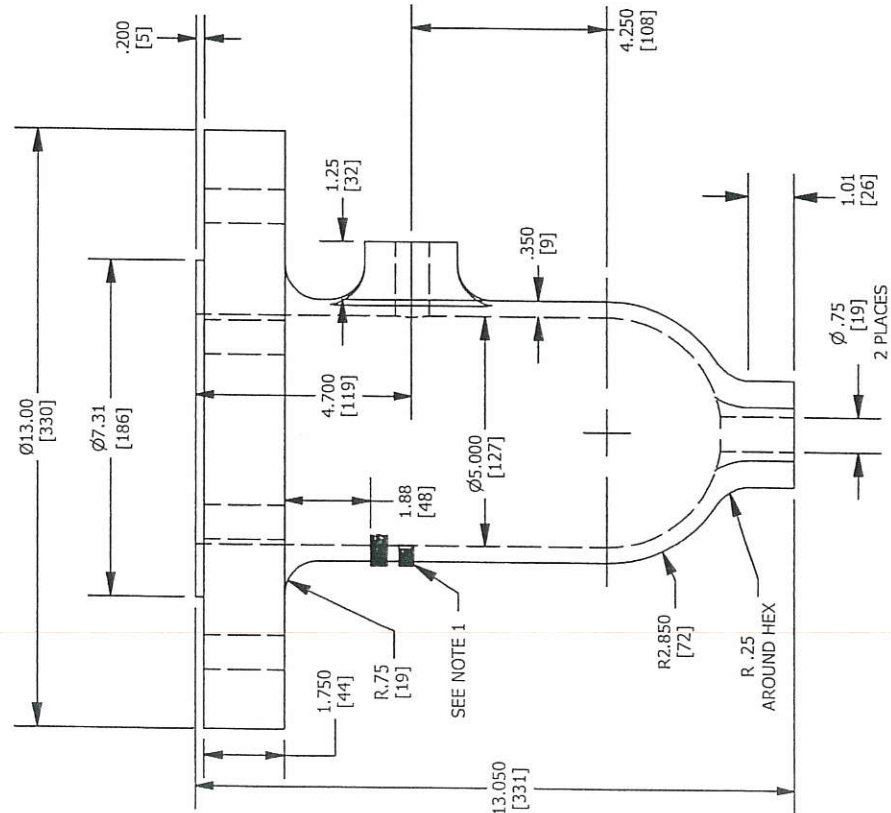
BODY: 4": 300#: EA100G

PART NUMBER: EA7200
TOLERANCE CLASS (PER PES-004): B
MATERIAL: A216 WCB
REVISION: 0 15-112 4/13/2015 DMB
DRAWN: DMB DRAWING NO.: EA7200
CHECKED: SRM
DATE: 2/21/2014
REV.: 0

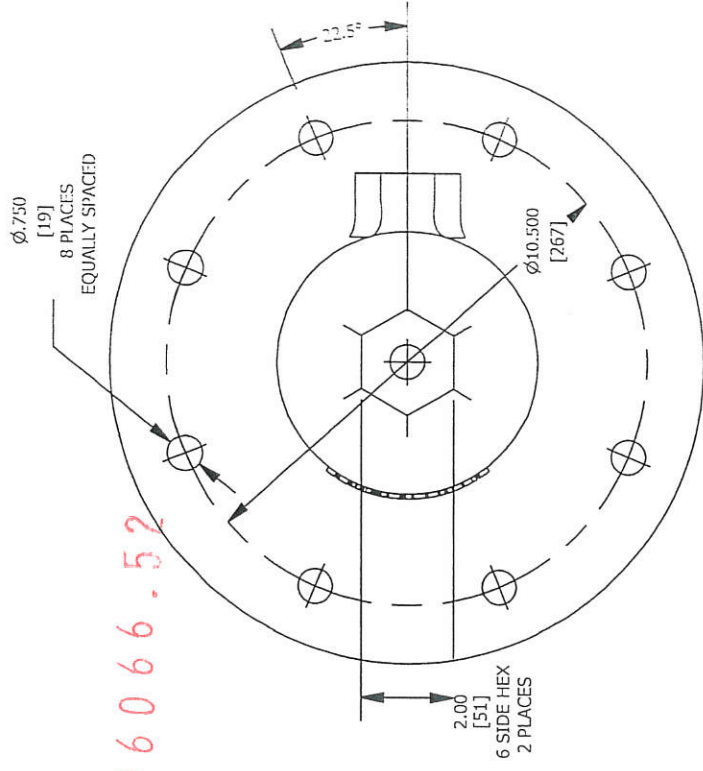
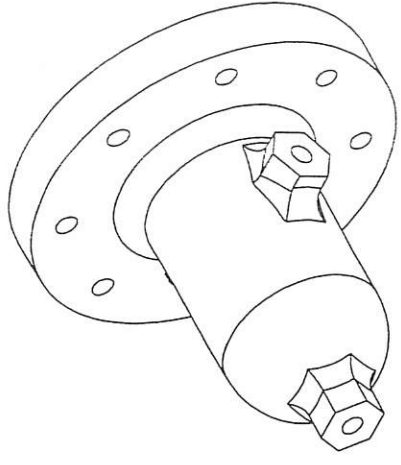
0	9/28/2016	BODY: CASTING: 5": 600#	REVISION	DMB
REV	DATE			BY

NOTES:  
 1) CAST THE FOLLOWING LETTERING ON NON-MACHINED SURFACES.  
 A) CLARK-RELIANCE  
 B) LEVELALARM  
 C) APPLICABLE HEAT NO.

2) FILLETS & ROUNDS: .03R U.O.N.  
 3) CASTING MASS: 72.8 LBM.



OH16066.52



MANUFACTURED BY  
**Clark-Reliance®**  
 16633 FOLTZ PARKWAY  
 STRONGSVILLE, OH 44149 USA  
 (440) 572-1500 | www.clarkreliance.com  
 © Clark-Reliance® Corporation. All Rights Reserved.

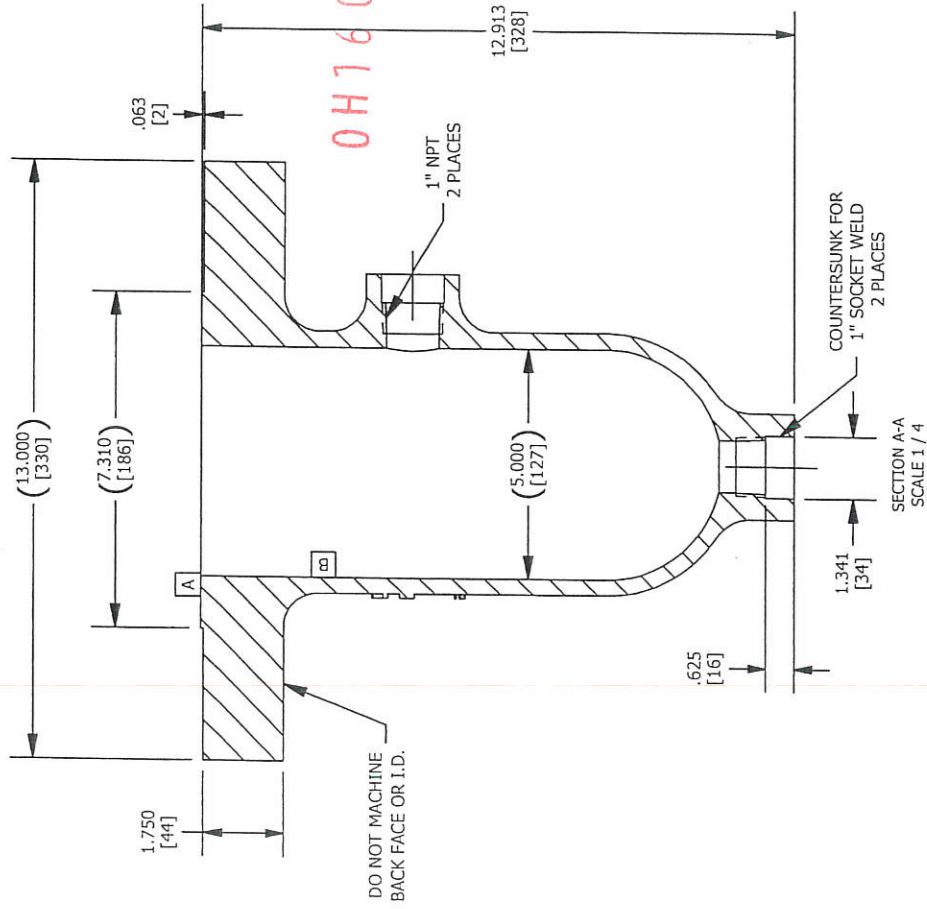
CLARK-RELIANCE®

BODY: CASTING: 5": 600#

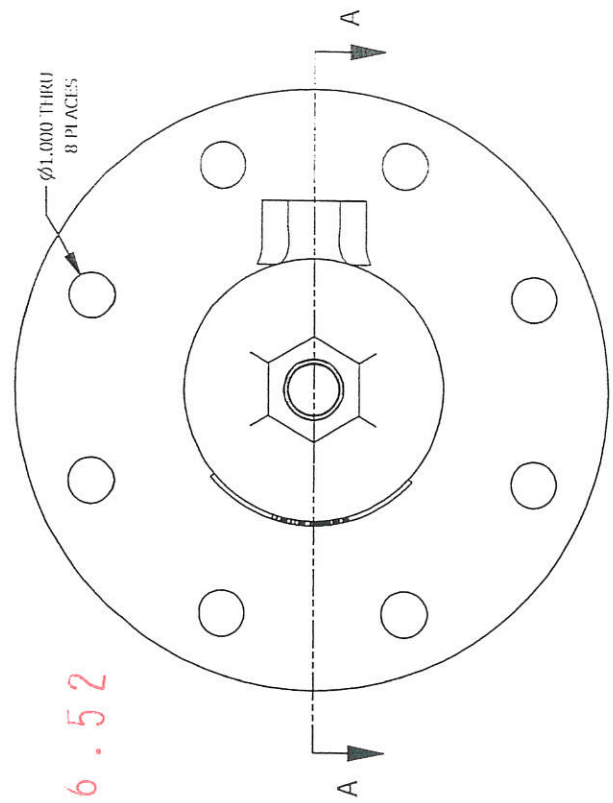
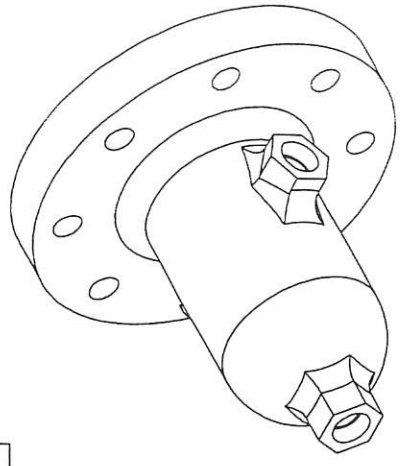
PART NUMBER: REA7201
TOLERANCE CLASS (PER PES-004): B
MATERIAL: A216 WCB
REVISION: 0 15-112 4/13/2015 DMB
DRAWN: DMB
CHECKED: SRM
DATE: 7/1/2015
DRAWING NO.: EA7201
REV.: 0

0	9/28/2016	BODY: 5": 600#: EA100G	DMB
REV	DATE	REVISION	BY

- NOTES:
- 1) CASTING PER DRAWING EA7201.
  - 2) FACES "A" AND "B"  $\perp$  WITHIN .031.
  - 3) FACE "A" FLAT WITHIN .005.
  - 4) FLANGE FACE TO BE SERRATED PER ANSI B16.5.



OH16066.52



MANUFACTURED BY  
**Clark-Reliance®**  
 16633 FOLTZ PARKWAY  
 STRONGSVILLE, OH 44149 USA  
 (440) 572-1500 | www.clarkreliance.com  
 © Clark-Reliance® Corporation. All Rights Reserved.

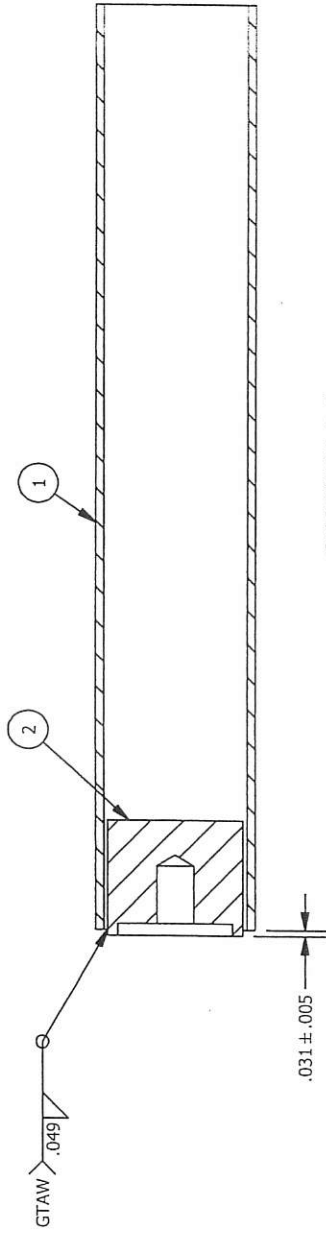
**CLARK-RELIANCE®**

BODY: 5": 600#: EA100G

PART NUMBER: REA7202
TOLERANCE CLASS (PER PES-004): B
MATERIAL: AZ16 WCB
REVISION: 0 15-112 4/13/2015 DMB
DRAWN: DMB
CHECKED: SRM
DATE: 7/1/2015
DRAWING NO.: EA7202
REV.: 0

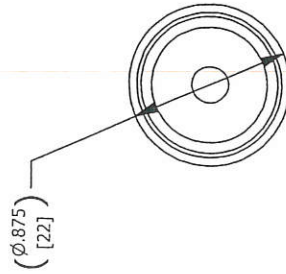
0	9/29/2016	DATE	REVISION	DMB	BY

PRESSURE TUBE ASSEMBLY, NEW RELEASE 15-112



SECTION A-A  
SCALE 1 : 1

0H16066.52



BILL OF MATERIAL			
NO.	PART NO.	DESCRIPTION	QTY.
1	REA7226	PRESSURE TUBE	1
2	M-1017-13	REAMIN, SAVAN E/P E-TUBE PLUG	1

CLARK-RELIANCE®

PRESSURE TUBE ASSEMBLY

MANUFACTURED BY  
**Clark-Reliance®**  
 16633 FOLTZ PARKWAY  
 STRONGSVILLE, OH 44149 USA  
 (440) 572-1500 | www.clarkreliance.com  
 © Clark-Reliance® Corporation. All Rights Reserved.

PART NUMBER: REA1358  
 TOLERANCE CLASS (PER P15-004): C  
 MATERIAL: SEE BOM  
 REVISION: 0 15-112 4/13/2015 DMB  
 DRAWN: DMB DRAWING NO.:  
 CHECKED: SRM  
 DATE: 2/5/2016  
 REV.: EA1358 0

THIS DRAWING CONTAINS MATERIAL THAT IS CONFIDENTIAL AND/OR PRIVILEGED FOR THE SOLE USE OF THE INTENDED RECIPIENT. ANY REVIEW, RELIANCE OR DISTRIBUTION BY OTHERS OR FORWARDING WITHOUT EXPRESS PERMISSION IS STRICTLY PROHIBITED.

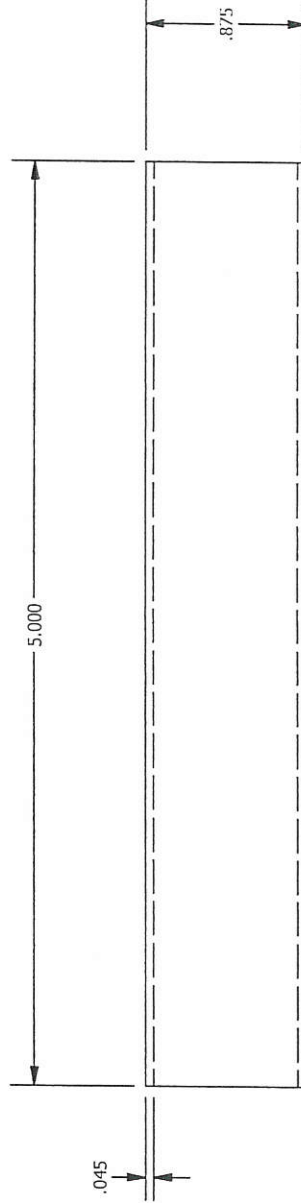
MANUFACTURED BY  
**Clark-Reliance®**  
 16633 FOLTZ PARKWAY  
 STRONGSVILLE, OH 44149 USA  
 (440) 572-1500 | www.clarkreliance.com  
 © Clark-Reliance® Corporation. All Rights Reserved.

PRESSURE TUBE

JERGUSON®

DRAWN: DMB  
 CHECKED: SRM  
 DATE: 12/18/2014  
 REVISION: 0 15-112 4/13/2015 DMB  
 MATERIAL: 304/316 STAINLESS STEEL  
 TOLERANCE CLASS (PER PES-004): B  
 PART NUMBER: REA7226

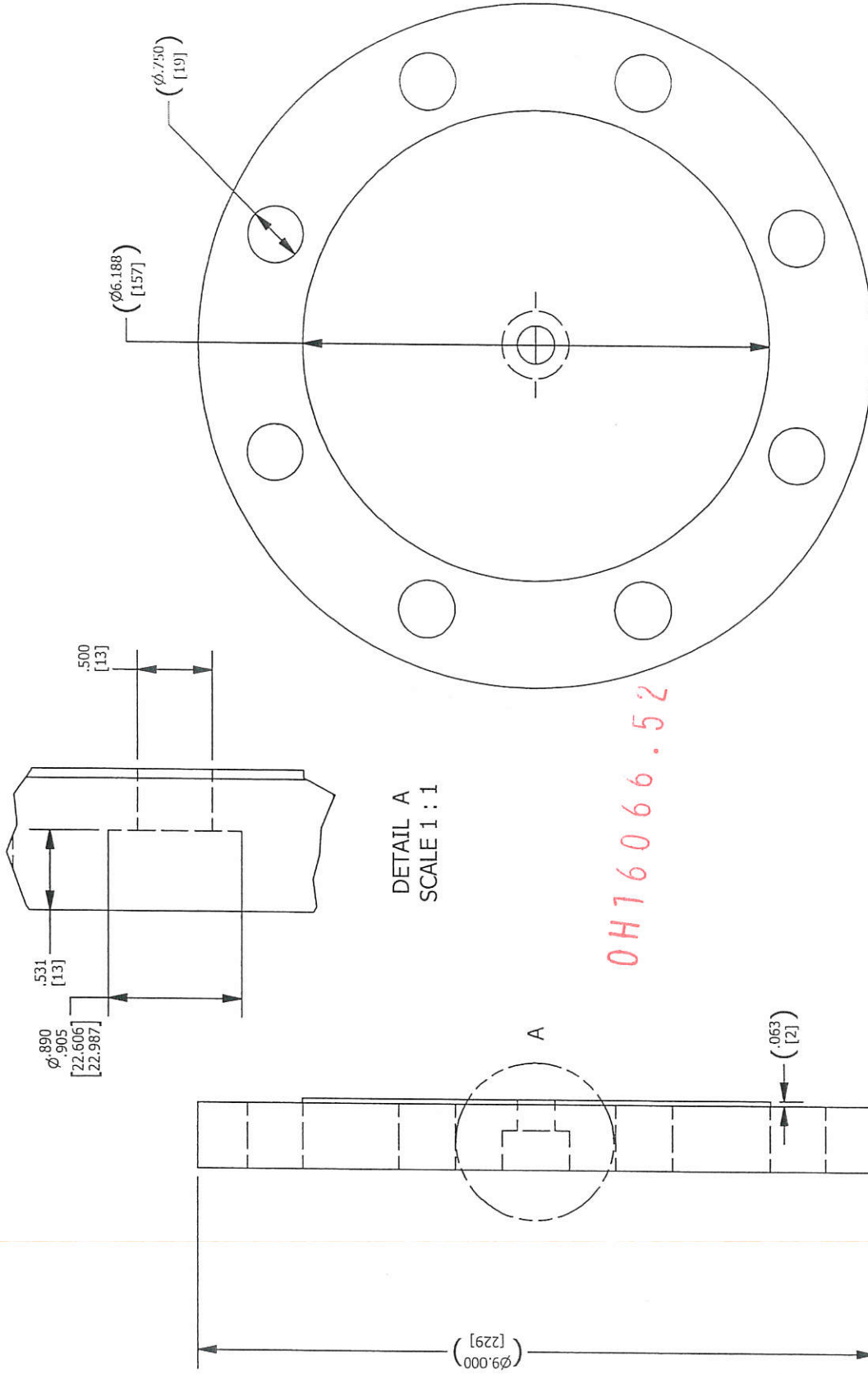
REV: 0



0H16066.52

REV	DATE	REVISION	DMB BY
0	9/28/2016	PRESSURE TUBE, CDC 15-112	DMB
1			

BILL OF MATERIAL			
NO.	PART NO.	DESCRIPTION	QTY.
1	BR183564	7/8" .049W 316SS	5 IN



DETAIL A  
SCALE 1 : 1

0H16066.52

NOTES:  
1) 4" 150# STANDARD ASME B16.5 FLANGE.  
2) MACHINED FOR 7/8" TUBE SOCKET WELD.

MANUFACTURED BY  
**Clark-Reliance®**  
16633 FOLTZ PARKWAY  
STRONGSVILLE, OH 44149 USA  
(440) 572-1500 | www.clarkreliance.com  
© Clark-Reliance® Corporation. All Rights Reserved.

BILL OF MATERIAL

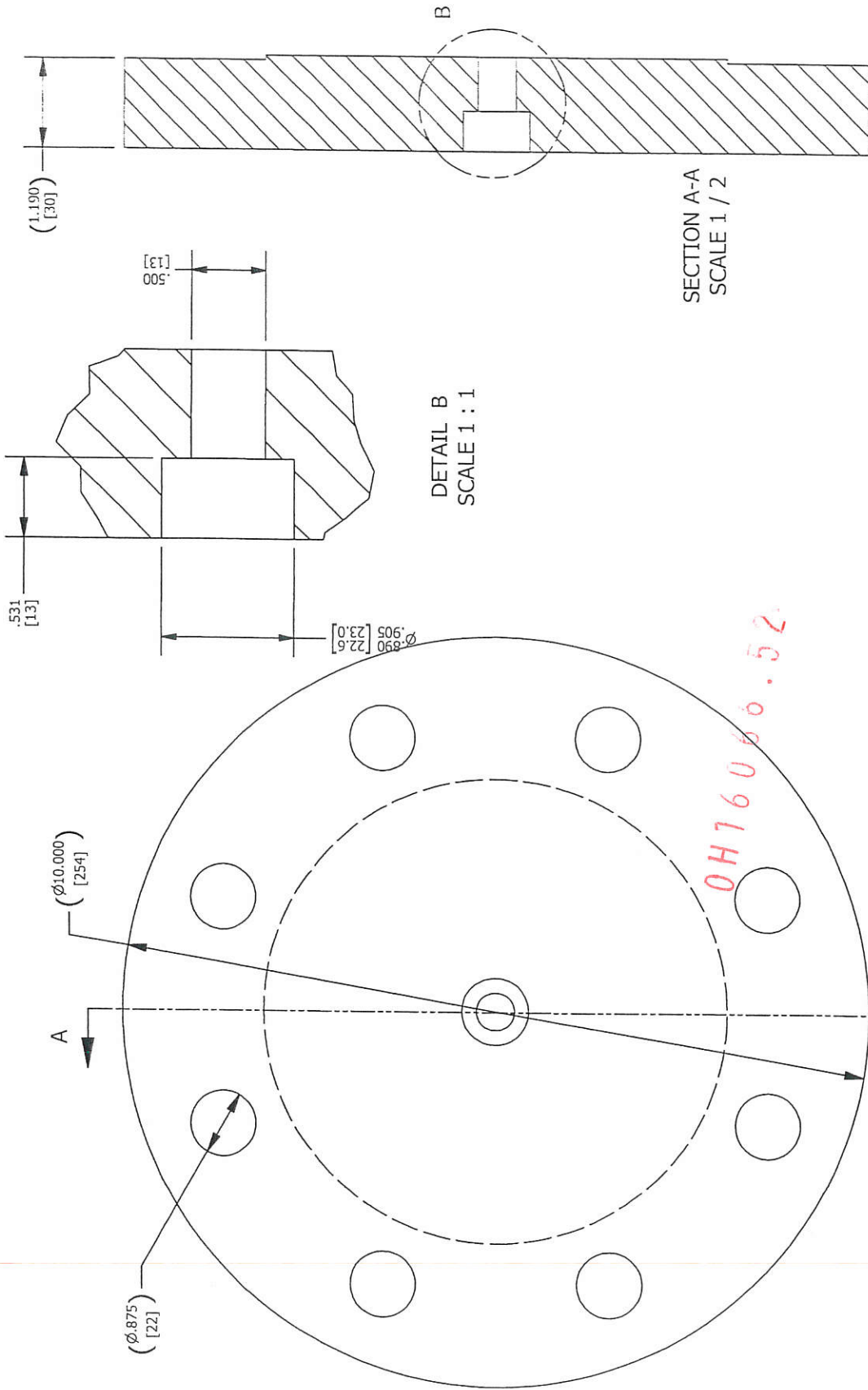
REV	NO.	DATE	DESCRIPTION	BY	QTY.
0	1	9/28/2016	4" 150# FLANGE: MACHINED: SOCKET WELD	DMB	1
			REVISION		
			FA5 1 9 ACIP	J5-B	1

PART NUMBER: REA7225  
TOLERANCE CLASS (PER PIES-004): B

MATERIAL: SA-105  
REVISION: 0 15-112 4/13/2015 DMB  
DRAWN: DMB DRAWING NO.: EA7225  
CHECKED: SRM  
DATE: 3/3/2014

CLARK-RELIANCE®  
4" 150# FLANGE: MACHINED: SOCKET WELD





SECTION A-A  
SCALE 1 / 2

DETAIL B  
SCALE 1 : 1

BILL OF MATERIAL			
NO.	PART NO.	DRAWING	QTY.
1	FA5 3 9 AC1P	J5-8	1

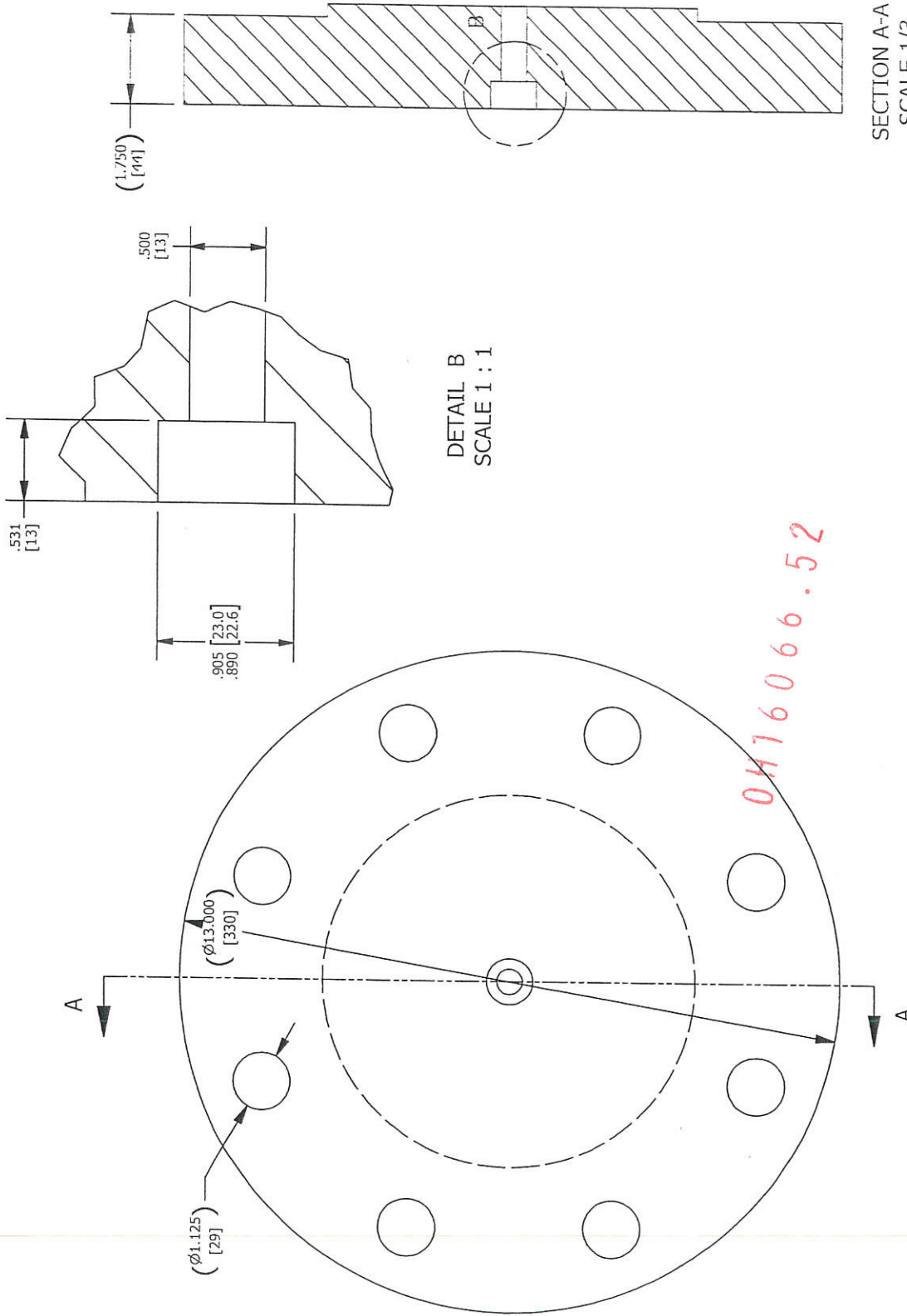
PART NUMBER: REA7239 TOLERANCE CLASS (PER PES-004): B	
MATERIAL: SA-105 REVISION: 0 15-112 4/13/2015 DMB	
DRAWN: DMB CHECKED: SRM DATE: 12/9/2015	DRAWING NO.: EA7239 REV.: 0

CLARK-RELIANCE®

4" : 300# : FLANGE: MACHINED: SOCKET WELD

MANUFACTURED BY  
**Clark-Reliance®**  
 16633 FOLTZ PARKWAY  
 STRONGSVILLE, OH 44149 USA  
 (440) 572-1500 | www.clarkreliance.com  
 © Clark-Reliance® Corporation. All Rights Reserved.

THIS DRAWING CONTAINS MATERIAL THAT IS CONFIDENTIAL AND/OR PRIVILEGED FOR THE SOLE USE OF THE INTENDED RECIPIENT. ANY REVIEW, RELIANCE OR DISTRIBUTION BY OTHERS OR FORWARDING WITHOUT EXPRESS PERMISSION IS STRICTLY PROHIBITED.



DETAIL B  
SCALE 1 : 1

SECTION A-A  
SCALE 1/3

REV	DATE	REVISION	DMB	BY
0	9/27/2016	5": 600#: FLANGE; MACHINED; SOCKET WELD	DMB	

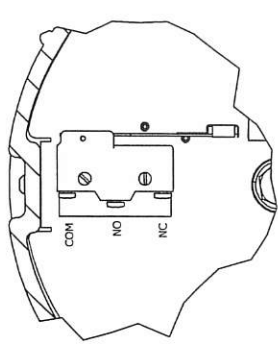
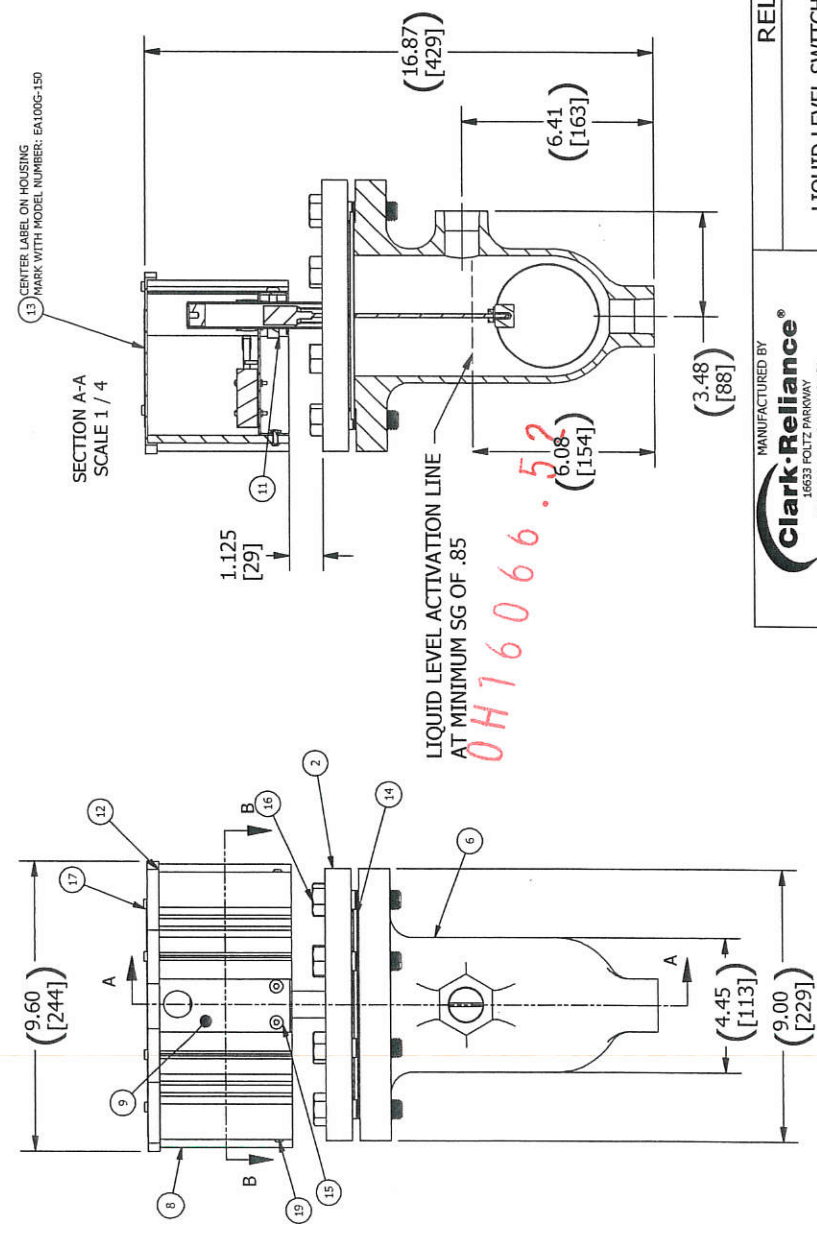
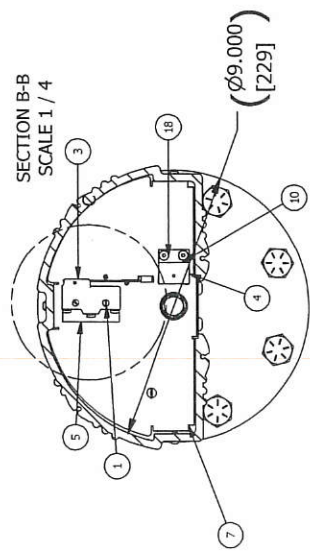
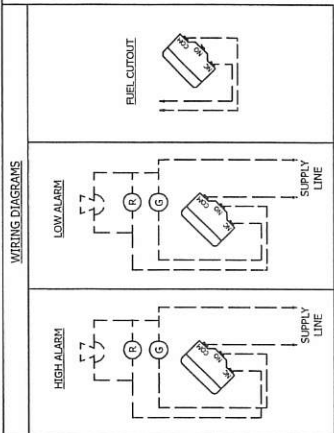
BILL OF MATERIAL				
NO.	PART NO.	DRAWING	QTY.	
1	FA5 1 A AC1P	J5-B	1	

PART NUMBER: REA7240  
 TOLERANCE CLASS (PER PES-004): B  
 MATERIAL: SA-105  
 REVISION: 0 15-112 4/13/2015 DMB  
 DRAWN: DMB DRAWING NO.:  
 CHECKED: SRM  
 DATE: 12/9/2015  
 REV: 0

CLARK-RELIANCE®  
 5": 600#: FLANGE; MACHINED; SOCKET WELD

MANUFACTURED BY  
**Clark-Reliance®**  
 16633 FOLTZ PARKWAY  
 STRONGSVILLE, OH 44149 USA  
 (440) 572-1500 | www.clarkreliance.com  
 © Clark-Reliance® Corporation. All Rights Reserved.

THIS DRAWING CONTAINS MATERIAL THAT IS CONFIDENTIAL AND/OR PRIVILEGED FOR THE SOLE USE OF THE INTENDED RECIPIENT. ANY REVIEW, RELIANCE OR DISTRIBUTION BY OTHERS OR FORWARDING WITHOUT EXPRESS PERMISSION IS STRICTLY PROHIBITED.



MODEL NUMBER: EA100G-150

- NOTES:
- MICRO SWITCH APPROVED FOR THE FOLLOWING RATINGS:  
1. 5A-125, 250, OR 480 VAC  
1/2A - 125 VDC  
1/4A - 250 VDC
  - UNITS IN INCHES W/ MM EQUIVALENTS IN BRACKETS
  - MINIMUM SG = .85
  - TEMPERATURE GROUP 1, 1.150 CLASS FLANGE
  - HYDROTEST PRESSURE 300 PSIG

BILL OF MATERIAL

NO.	PART NO.	DESCRIPTION	DRAWING	QTY.
1	1500721	SREW: #40 X 1" PHMS	1500721	2
2	REAL344	FLANGE FLOAT: 150# ASSEMBLY	EA1344	1
3	REAL351	SWITCH: MAGNET: ASSEMBLY	EA1351	1
4	REAL352	TERTIARY MAGNET: EA100G, ASSEM	EA1352	1
5	EA615	SWITCH INSULATOR	EA6-15	1
6	REA7198	BODY: 4" 150#: EA100G	EA7198	1
7	REA7204	BASEPLATE: EA100G	EA7204	1
8	REA7228	EXTRUSION: HOUSING: EA100G	EA7228	1
9	REA7229	CONNECTION PLATE: SS: EA100G	EA7229	1
10	REA7231	MAGNET HOLDER: EA100G	EA7231	1
11	REA7233	CLAMP: EA100G SWITCH	EA7233	1
12	REA7238	COVER: HOUSING: EA100G	EA7238	1
13	REA7244	LABEL: EA100G: LEVALARM	EA7244	1
14	V19376.1.9.2	FLANGE GASKET: SPIRAL WOUND	V-19376	1
15	X171028	1/4-20 X 1.25": BHCS	X-171028	2
16	X172400	BOLT: 5/8-11 X 2.5"	X-172400	8
17	X172601	CREW: 8-32 X .250": THREAD FORMING	X-172601	4
18	X172621	SCREW: 8-32 X 5/16": BHCS	X-172621	2
19	X172883	8-32 X 7/16": BHCS	X-172883	3

RELiance®

MANUFACTURED BY  
**Clark-Reliance®**  
STROCKVILLE, OH 44480 USA  
(440) 572-1500 | www.clarkreliance.com  
© Clark-Reliance® Corporation. All Rights Reserved.

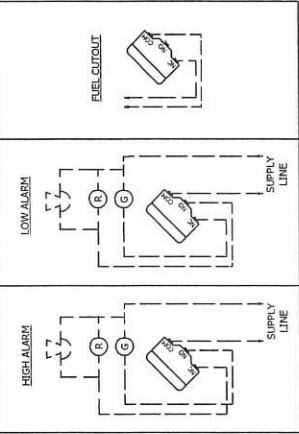
LIQUID LEVEL SWITCH ASSEMBLY: 150#: EA100G

PART NUMBER: REAL345  
TOURANCE CLASS (PFB PFC-PAD): D  
MATERIAL: SEE BOM  
REVISION: 0 15-12 (11/2015) DMB  
DRAWN: DMB  
CHECKED: SRM  
DATE: 4/13/2015  
DRAWING NO.: EA1345  
REV.: 0

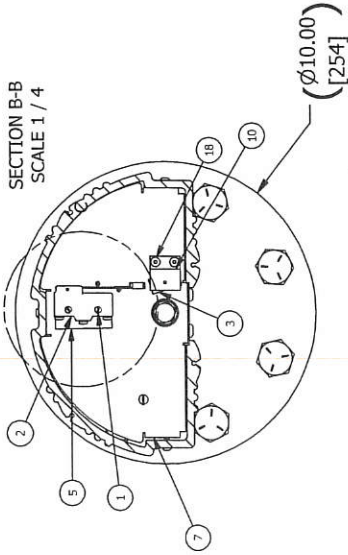
REV	DATE	BY
0	3/2/2017	DMB

LIQUID LEVEL SWITCH ASSEMBLY: 150#: EA100G, NR CDC 15-112  
REVISION

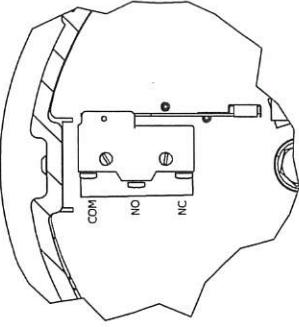
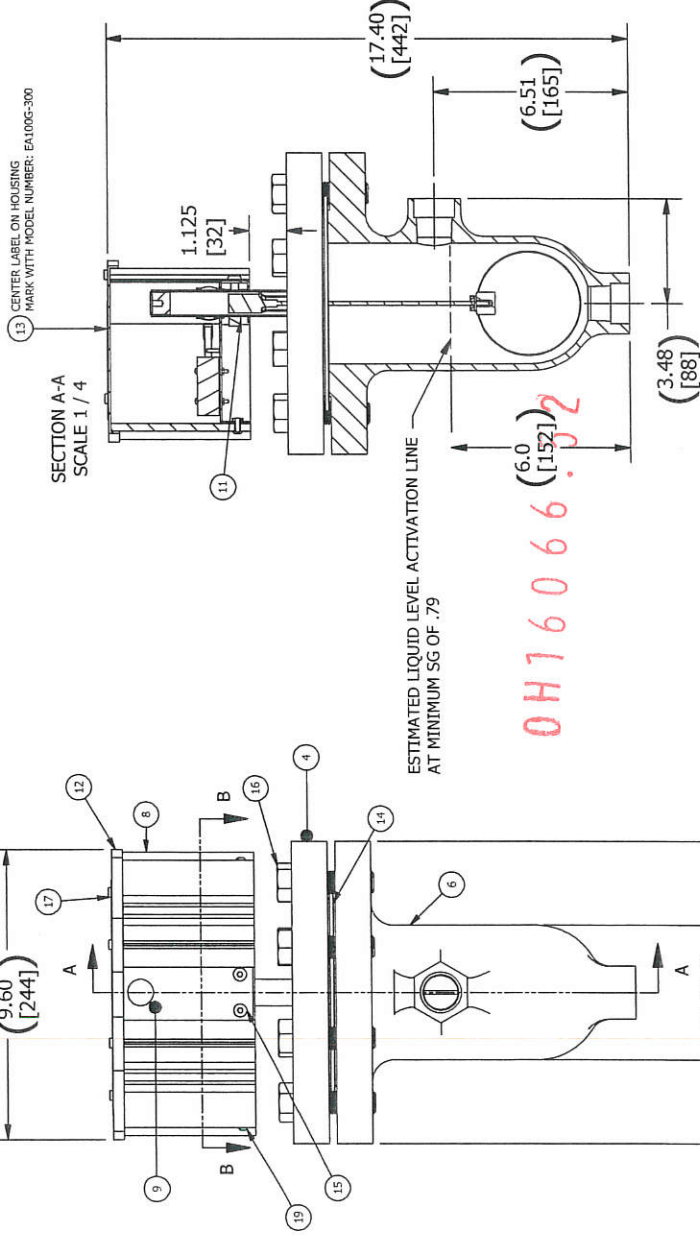
WIRING DIAGRAMS



SECTION B-B  
SCALE 1 / 4



SECTION A-A  
SCALE 1 / 4



DETAIL C  
SCALE 1:2

MODEL NUMBER EA100G-300

- NOTES:
- MICRO SWITCH APPROVED FOR THE FOLLOWING RATINGS:  
1. 5A-125, 250, OR 480 VAC  
1/2A - 125 VDC  
1/4A - 250 VDC
  - UNITS IN INCHES (W/ MM EQUIVALENTS IN BRACKETS)  
1/16" = .0625" (1.5875 mm)  
1/8" = .125" (3.175 mm)
  - MAWP PER B16.5 GROUP 1.1 300 CLASS FLANGE
  - HYDROTEST PRESSURE 750 PSIG.

BILL OF MATERIAL

NO.	PART NO.	DESCRIPTION	DRAWING	QTY.
1	J 5007 21	SRW: 4-40 X 1"; PHMS	J-5007-21	2
2	REAL351	SWITCH: MAGNET; ASSEMBLY	EA1351	1
3	REAL352	TERTIARY MAGNET; EA100G	EA1352	1
4	REAL354	FLANGE: FLOAT; 300#; ASSEMBLY	EA1344	1
5	REA6 15	SWITCH INSULATOR	EA6-15	1
6	REA7200	BODY; 4"; 300#; EA100G	EA7196	1
7	REA7204	BASEPLATE; EA100G	EA7204	1
8	REA7228	EXTRUSION; HOUSING; EA100G	EA7228	1
9	REA7229	CONNECTION PLATE; SS; EA100G	EA7229	1
10	REA7231	MAGNET HOLDER; EA100G	EA7231	1
11	REA7233	CLAMP; EA100G SWITCH	EA7233	1
12	REA7238	COVER; HOUSING; EA100G	EA7238	1
13	REA7244	LABEL; EA100G; LEVALARM	EA7244	1
14	V19376 3 9 2	FLANGE GASKET SPIRAL WOUND	V-19376	1
15	X171028	SCREW: 1/4-20 X 1.25"; BHCS	X-171028	2
16	X172162	SCREW: 3/4-10 X 2-3/4" B7	X-172162	2
17	X172601	SCREW: B-32 X .250"; THREAD FORMING	X-172601	4
18	X172621	SCREW: B-32 X 5/16"; BHCS	X-172621	2
19	X172883	SCREW: B-32 X 7/16"; BHCS	X-172883	3

RELIANCE®

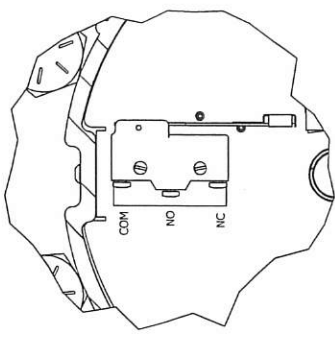
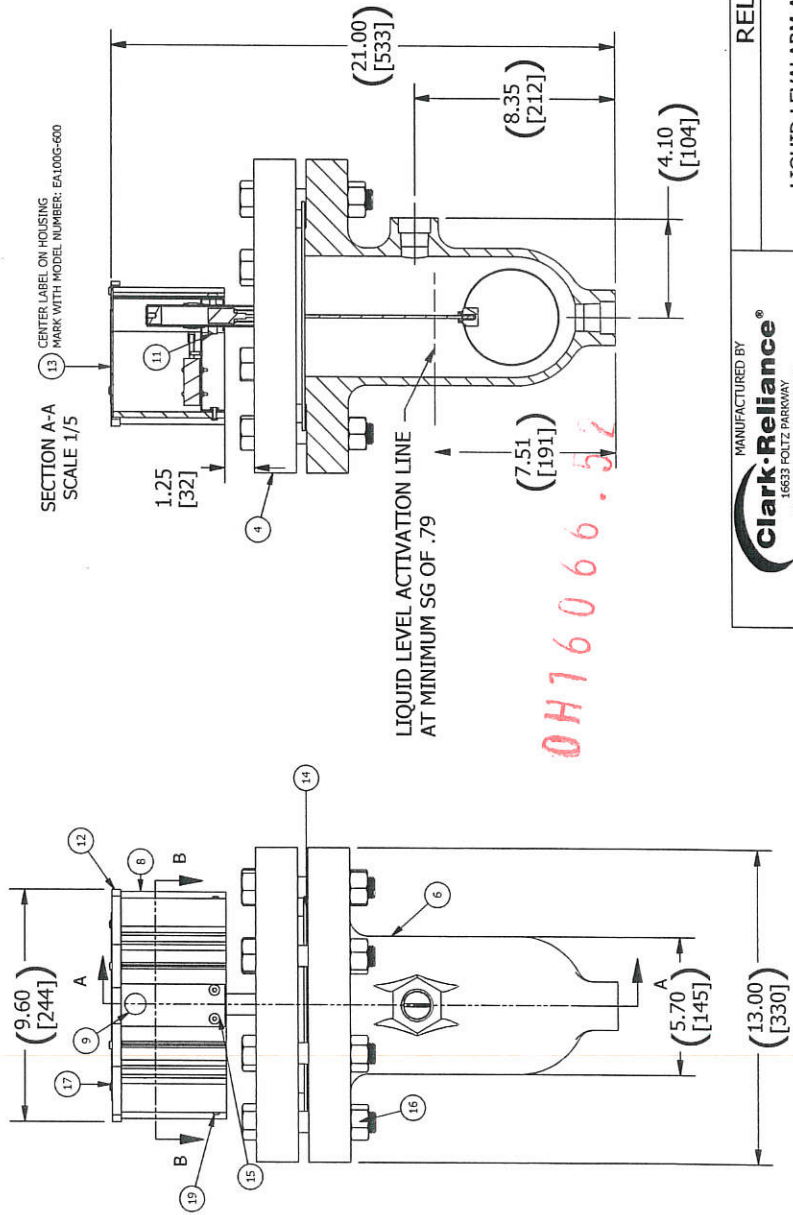
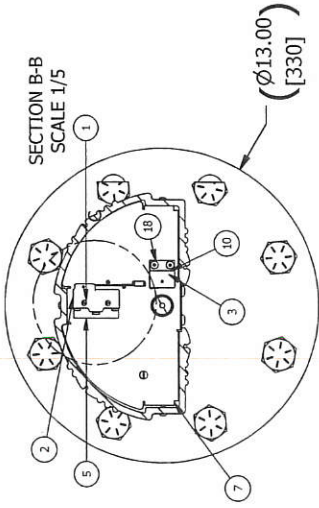
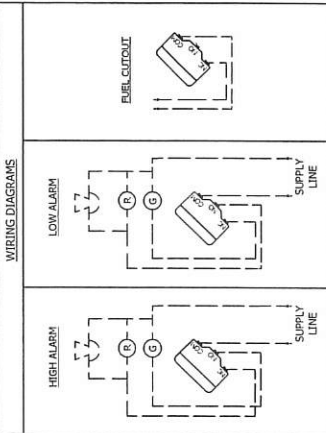
MANUFACTURED BY  
**Clark-Reliance®**  
1683 FOLTZ PARKWAY  
STRONGSVILLE, OH 44149 USA  
(+40) 572-1500 | www.clarkreliance.com  
© Clark-Reliance® Corporation. All Rights Reserved.

LIQUID LEVELARM ASSEMBLY: 300#; EA100G

REVISION: 0 15-112 4/13/2015 DNB  
DRAWING: DMB DRAWING NO.: EA1353  
CHECKED: SRM  
DATE: 4/13/2015  
REV: 0

REV	DATE	BY
0	3/2/2017	

LIQUID LEVELARM ASSEMBLY: 300#; EA100G, NR CDC 15-112  
REVISION



**MODEL NUMBER EA100G-600**

**NOTES:**

1. MICRO SWITCH APPROVED FOR THE FOLLOWING RATINGS:  
 1/4A - 250 VDC  
 1/2A - 125 VDC  
 1/4A - 250 VDC
2. UNITS IN INCHES W/ MM EQUIVALENTS IN BRACKETS
3. MINIMUM SG = .799
4. MAMP PER B16.5 GROUP 1.1 600 CLASS FLANGE
5. HYDROTEST PRESSURE 1500 PSIG

**BILL OF MATERIAL**

NO.	PART NO.	DESCRIPTION	DRAWING	QTY.
1	J 5007 21	SCREW: 4-40 X 1"; PHMS	J-5007-21	2
2	REAL351	SWITCH MAGNET ASSEMBLY	EA1351	1
3	REAL352	TERTIARY MAGNET: EA100G	EA1352	1
4	REAL357	FLANGE FLOAT: 600P; ASSEMBLY	EA1344	1
5	REA6 15	SWITCH INSULATOR	EA6-15	1
6	REA7202	BODY: 5"; 600#; EA100G	EA7199	1
7	REA7204	BASEPLATE: EA100G	EA7204	1
8	REA7228	EXTRUSION: HOUSING: EA100G	EA7228	1
9	REA7229	CONNECTION PLATE: SS: EA100G	EA7229	1
10	REA7231	MAGNET HOLDER: EA100G	EA7231	1
11	REA7233	CLAMP: EA100 SWITCH	EA7233	1
12	REA7238	COVER: HOUSING: EA100G	EA7238	1
13	REA7244	LABEL: EA100G: LEVALARM	EA7244	1
14	V19376 6 A 2	GASKET: 304/304/FG/CS SW1, 5" 600#	V-19376	1
15	X171028	SCREW: 1/4-20 X 1.25"; BHCS	X-171028	2
16	X171571	NUT: HHCS: 7/8-9; GRADE 8	X-171571	6
17	X172601	SCREW: 8-32 X .250"; THREAD FORMING	X-172601	4
18	X172621	SCREW: 8-32 X 5/16"; BHCS	X-172621	2
19	X172863	SCREW: 8-32 X 7/16"; BHCS	X-172863	3
20	X173393	SCREW HHCS 7/8-9 X 5 ZINC GRADE 8	X-173393	8

**RELIANCE®**

MANUFACTURED BY  
**Clark-Reliance®**  
 16633 FOLTZ PARKWAY  
 STRONGSVILLE, OH 44149 USA  
 (440) 572-1500 | www.clarkreliance.com  
 © Clark-Reliance® Corporation. All Rights Reserved.

THIS DRAWING CONTAINS MATERIAL THAT IS CONFIDENTIAL AND/OR PROPRIETARY TO RELIANCE. ANY REPRODUCTION OR DISTRIBUTION BY OTHERS FOR FORWARDING WITHOUT EXPRESS PERMISSION IS STRICTLY PROHIBITED.

**RELANCE®**

**LIQUID LEVALARM ASSEMBLY: 600#: EA100G**

**REVISION**

REV	DATE	BY
0	3/2/2017	

**EA100 600 CLASS LIQUID LEVALARM ASSEMBLY, NR CDC 15-112**

**REVISION**

REV.	DATE	DRAWING NO.	REV.
0	4/13/2015	EA1356	0

**MATERIAL: SEE BOM**

**REVISION: 0 15-112 4/13/2015 DNB**

**DRAWN: DMB**

**CHECKED: SRM**