

BILL OF MATERIAL (CARBON STEEL)

NO.	NAME OF PART	QTY.	MATERIAL	PART NO.	SPECIFICATION
1	CHAMBER, TRANSPARENT	1	CARBON STEEL	PER ORDER	ASTM A36
1	CHAMBER, REFLEX	1	CARBON STEEL	V4 ### #.### A	ASTM A36
2	GASKET, SEAL	1 PER SECT.	IFG5500	V19469 ##	
3	GLASS, TRANSPARENT	1 PER SECT.	BOROSILICATE	L1412 ##	
3	GLASS, REFLEX	1 PER SECT.	BOROSILICATE	L1413 ##	
4	GASKET, CUSHION	1 PER SECT.	IFG5500	V19469 ##	
5	COVER	1 PER SECT.	CARBON STEEL	V19607 ## A11	ASTM A36
6	BOLT	SEE CHART	ALLOY STEEL	P4527 B71	ASTM A193 GR.B7
7	WASHER	2	304SS	V13936 R	
8	TAG, RATING	1	304SS	V21864	

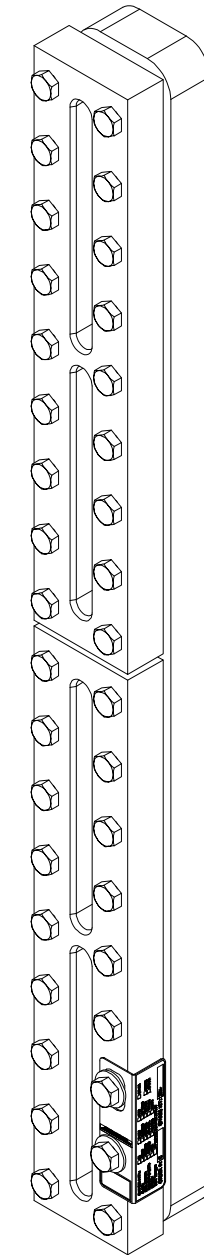
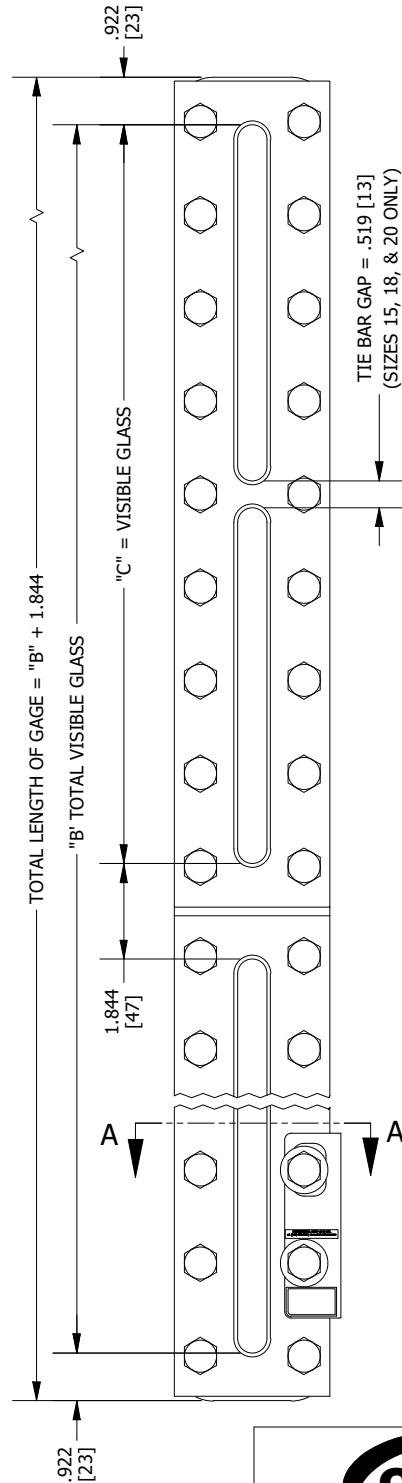
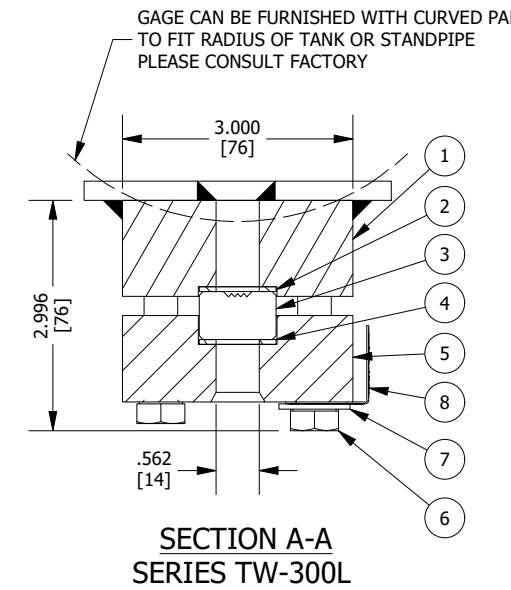
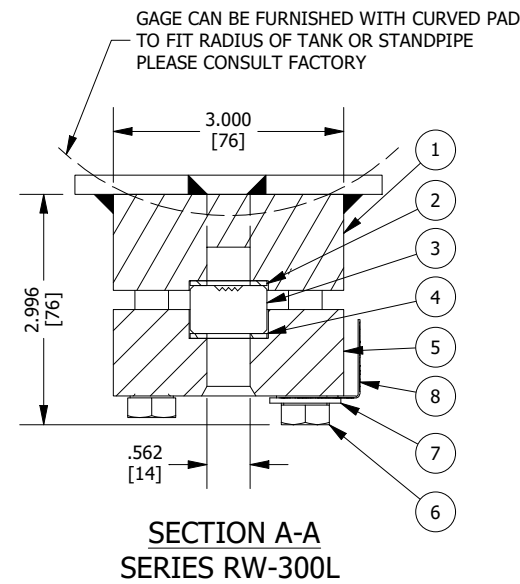
BILL OF MATERIAL (316SS PIC)

NO.	NAME OF PART	QTY.	MATERIAL	PART NO.	SPECIFICATION
1	CHAMBER, TRANSPARENT	1	316/316LSS	PER ORDER	ASTM A276 & ASME SA479
1	CHAMBER, REFLEX	1	316/316LSS	V4 ### #.### T	ASTM A276 & ASME SA479
2	GASKET, SEAL	1 PER SECT.	IFG5500	V19469 ##	
3	GLASS, TRANSPARENT	1 PER SECT.	BOROSILICATE	L1412 ##	
3	GLASS, REFLEX	1 PER SECT.	BOROSILICATE	L1413 ##	
4	GASKET, CUSHION	1 PER SECT.	IFG5500	V19469 ##	
5	COVER	1 PER SECT.	CARBON STEEL	V19607 ## A11	ASTM A36
6	BOLT	SEE CHART	ALLOY STEEL	P4527 B71	ASTM A193 GR.B7
7	WASHER	2	304SS	V13936 R	
8	TAG, RATING	1	304SS	V21864	

BILL OF MATERIAL (ALL 316SS)

NO.	NAME OF PART	QTY.	MATERIAL	PART NO.	SPECIFICATION
1	CHAMBER, TRANSPARENT	1	316/316LSS	PER ORDER	ASTM A276 & ASME SA479
1	CHAMBER, REFLEX	1	316/316LSS	V4 ### #.### T	ASTM A276 & ASME SA479
2	GASKET, SEAL	1 PER SECT.	IFG5500	V19469 ##	
3	GLASS, TRANSPARENT	1 PER SECT.	BOROSILICATE	L1412 ##	
3	GLASS, REFLEX	1 PER SECT.	BOROSILICATE	L1413 ##	
4	GASKET, CUSHION	1 PER SECT.	IFG5500	V19469 ##	
5	COVER	1 PER SECT.	316/316LSS	V19607 ## TL2	ASTM A276 & ASME SA479
6	BOLT	SEE CHART	316SS	P4527 B8M	ASTM A193 GR.B8M
7	WASHER	2	304SS	V13936 R	
8	TAG, RATING	1	304SS	V21864	

- NOTES:
- DIMENSIONS IN INCHES W/ mm EQUIVALENTS IN BRACKETS.
 - TW-300L GAGES FURNISHED W/ TRANSPARENT GLASS & SLOTTED CHAMBER DESIGN (TWO HOLE DESIGN OPTIONAL). RW-300L GAGES FURNISHED W/ REFLEX GLASS & TWO HOLE CHAMBER DESIGN (SLOTTED DESIGN OPTIONAL).
 - DIMENSIONS OF TW-20 GAGES ARE THE SAME AS SHOWN FOR RW-20.
 - REFER TO THE FOLLOWING (FOR):
 - CATALOG BULLETIN J100.15 (ADDITIONAL INFORMATION).
 - IOM BULLETIN J500.11 (INSTRUCTIONS).
 - SEE PRICE SHEET BULLETINS FOR AVAILABLE OPTIONS.
 - "#" IN PART NUMBER INDICATES SIZE, NUMBER OF SECTIONS, AND RADIUS SIZE.
 - CONSULT FACTORY FOR ALTERNATE MATERIAL OPTIONS.
 - STANDARD WELDING PAD GAGES WILL WITHSTAND LOADINGS DUE TO PRESSURE WITHIN THE GAGE ITSELF, BUT THEY ARE NOT DESIGNED TO REPLACE THE TANK STRENGTH LOST WHEN THE TANK WALL IS DRILLED OR SLOTTED. IT IS THEREFORE IMPOSSIBLE TO RATE THE WELDING PAD GAGES FOR IN-SERVICE USE. THE TANK FABRICATOR MUST PROVIDE SUITABLE TANK WALL REINFORCEMENT TO PREVENT THE PAD FROM BEING DISTORTED WHILE UNDER OPERATING CONDITIONS. SEE APPLICABLE JERGUSON BULLETIN FOR ADDITIONAL INFORMATION.
 - GAGE RATING VARIANCE:
 - 750 PSI (53 KG/CM²) @ 100°F (38°C) (MAX. RATING)
 - 605 PSI (43 KG/CM²) @ 600°F (316°C) (MIN. RATING)
 - (>550°F (288°C) REQUIRES GRAFOIL GASKETS)



SIZE NO.	BOLTS PER SECT.	DIM. "C"	NUMBER OF SECTIONS			
			DIMENSION "B"			
			1	2	3	4
15	18	14.250 [362]	14.250 [362]	30.344 [771]	46.438 [1180]	62.532 [1588]
18	20	17.250 [438]	17.250 [438]	36.344 [923]	46.438 [1408]	74.532 [1893]
20	24	19.250 [489]	19.250 [489]	40.344 [1025]	61.438 [1561]	82.532 [2096]

REV	DATE	REVISION	BY
15	06/14/2021	CORRECTED MATERIALS IN 316SS AND ALL 316SS BOMS	CMN
14	02/11/2021	REDRAWN, UPDATED TO 2-HOLE CHAMBER DESIGN	CMN

<p>MANUFACTURED BY</p> <p>Clark-Reliance®</p> <p>16633 FOLTZ PARKWAY STRONGSVILLE, OH 44149 USA (440) 572-1500 www.clarkreliance.com © Clark-Reliance® Corporation. All Rights Reserved.</p>	<p>SERIES W300L WELD PAD GAGES</p> <p>JERGUSON®</p>	<p>DRAWING NO.:</p> <p>300L-W-00</p>	<p>REV.:</p> <p>15</p>
		<p>DRAWN: CMN</p> <p>CHECKED: MK</p> <p>DATE: 02/11/2021</p> <p>REV: 15</p>	<p>TOLERANCES (U.O.N.):</p> <p>C/C Dimensions: ± .125"</p> <p>Dimension Spanning Welded Parts: ± .125"</p> <p>Angles: ± 1°</p> <p>(See PES-004 for details)</p>