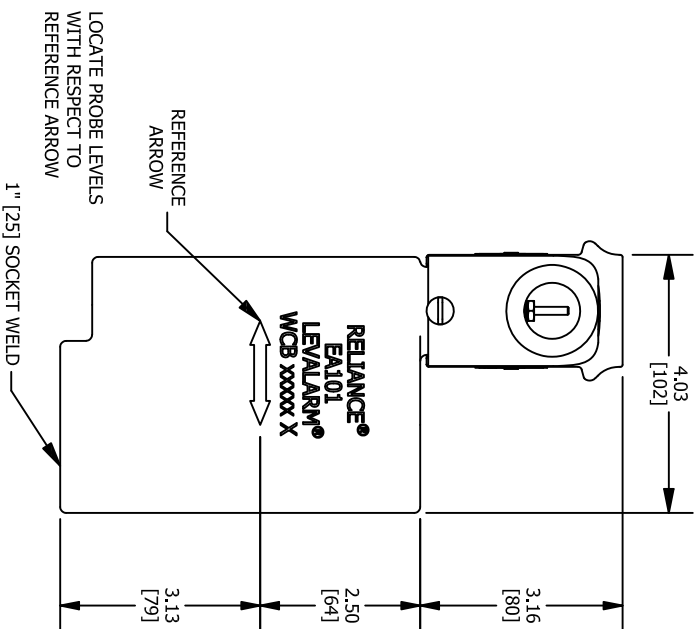
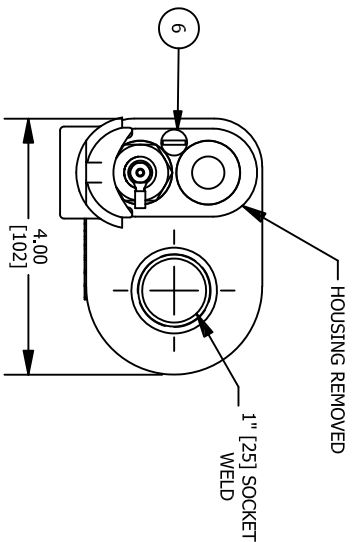
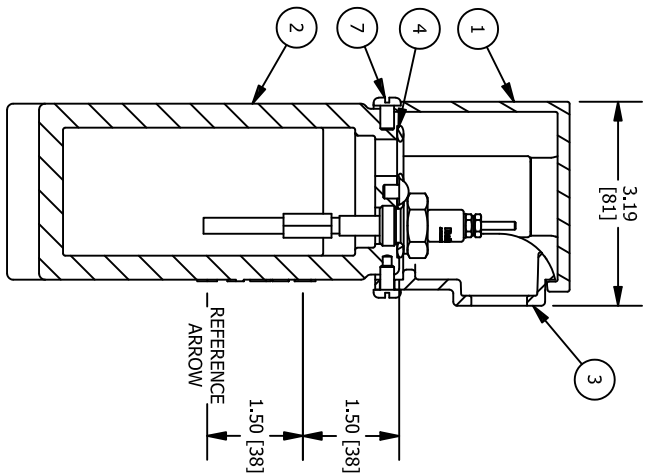
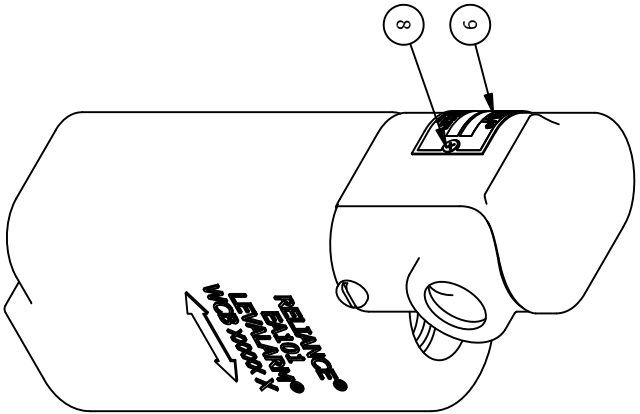


BILL OF MATERIAL

NO.	QTY.	PART NO.	DESCRIPTION	MATERIAL	DWG.
1	1	REA100 18	ELECTRODE FITTING HOUSING	ALUMINIUM	B-8697
2	1	REA101S 1 2SW	BODY	CARBON STEEL	A-14260
3	1	REA15R 22	CONDUIT BRACKET	ALUMINIUM	B-8697
4	2	SEE NOTE 2	GASKET		
5	2	SEE NOTE 2	PROBE		
6	1	X172990	ROUND HEAD MACHINE SCREW	BRASS	
7	2	X172993	ROUND HEAD MACHINE SCREW	18-8SS	
8	2	X173200	PAN HEAD MACHINE SCREW		
9	1	X174610	NAMEPLATE	ALUMINIUM	A-7863

- NOTES:
1. UNITS IN INCHES W/ MM EQUIVALENTS IN BRACKETS
 2. DESIGN PRESSURE RATINGS:
450 PSI "T" PROBES W/ WCM 13 GASKETS
1000 PSI "V" PROBES W/ X175500 GASKETS
1800 PSI "ZG" PROBES W/ E10 10S GASKETS
 3. THIS EA101 LEVALARM CAN BE USED FOR THE FOLLOWING CONTROL AND ALARM FUNCTIONS:
W/ ONE PROBE AND ONE RELAY, EITHER:
A. HIGH ALARM
B. LOW ALARM
C. FUEL CUTOFF



MANUFACTURED BY



16633 FOLTZ PARKWAY
STRONGSVILLE, OH 44149 USA
(440) 572-1500 | www.clarkreliance.com
© Clark-Reliance® Corporation. All Rights Reserved.

CLARK-RELIANCE®

EA101SW LEVALARM ASSEMBLY

PART NUMBER: REA101SW

TOLERANCE CLASS (PER PES-004): B

MATERIAL:

REVISION: 3 PER CDC 09-105/(KAT)

DRAWN: KAT DRAWING NO.:

CHECKED: MK

DATE: 12/30/2014

A-14260

REV.:

3