

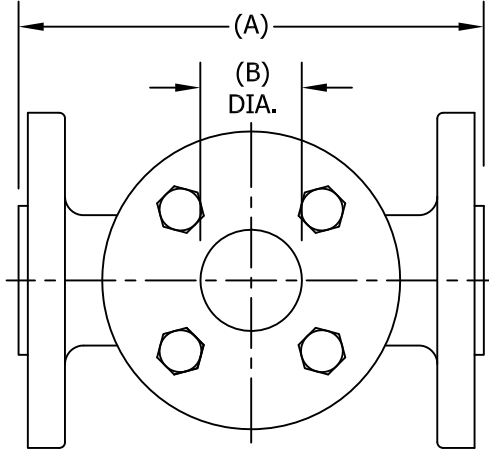
THIS DRAWING AND ALL INFORMATION ON IT IS THE PROPERTY OF THE CLARK-RELIANCE CORPORATION. IT IS CONFIDENTIAL AND IS GIVEN TO YOU FOR A LIMITED PURPOSE AND MUST BE RETURNED UPON REQUEST. NEITHER THIS DRAWING NOR ANY PART OF IT NOR ANY INFORMATION CONCERNING IT MAY BE COPIED, EXHIBITED OR FURNISHED TO OTHERS NOR MAY PHOTOGRAPHS BE TAKEN OF ANY ARTICLE FABRICATED OR ASSEMBLED FROM THIS DRAWING WITHOUT CONSENT OF THE CLARK-RELIANCE CORPORATION.



JACOBY-TARBOX®
 A Product of the Clark-Reliance Corporation
 16633 FOLTZ PARKWAY
 STRONGSVILLE, OH 44149 USA
 PH: +1 440-572-1500
 www.clark-reliance.com

SIGHT FLOW INDICATOR
 MODEL 910-FA-TEFLON & 608-FA-TEFLON
 TEFLON PFA LINED

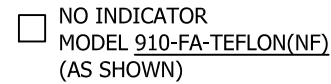
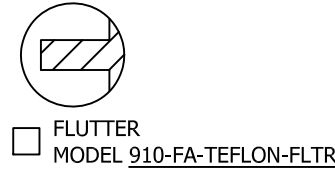
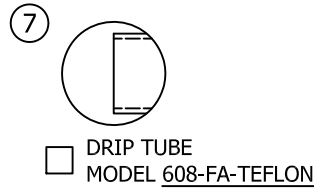
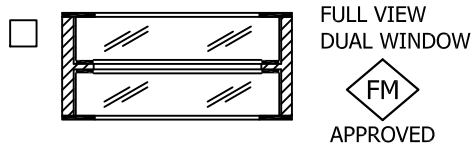
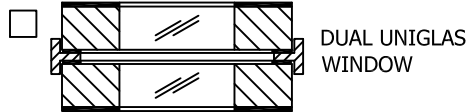
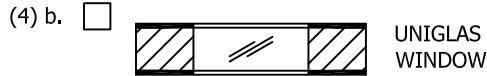
SECTION: T400	
BULLETIN: T400.06T	
DATE: 01/22/18	
SUPERSEDES: 01/01/17	
FILE NO.: T400-06-NEW	
DRAWN: MWS	CHECKED: DEP
SCALE: NONE	



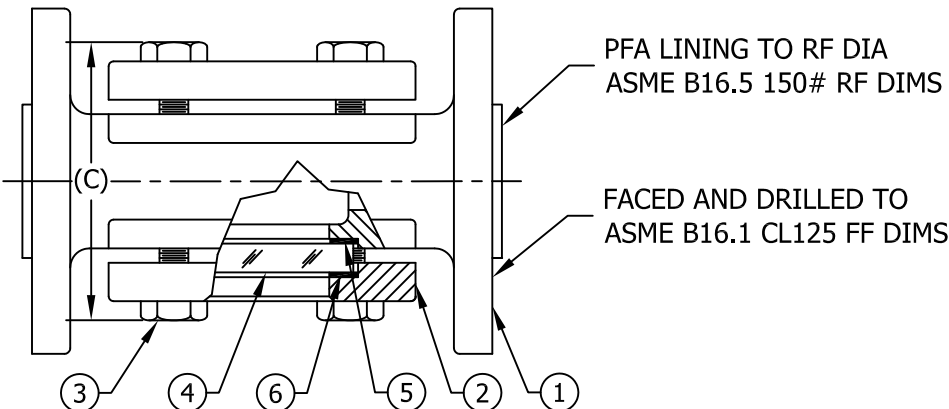
PARTS LIST				
PIECE NO.	PART NAME	QTY.	STANDARD DESIGN MATERIALS	
1	BODY	1	ASTM A395 60-40-18 (DUCTILE IRON)	
	TEFLON PFA LINING		ASTM F1545 & D3307	
2	RETAINER (2)	2	ASTM A105 (CARBON STEEL)	
3	BOLT (2)	8	ASTM A354-BD (ALLOY STEEL)	
4	WINDOW (3)	2	TEMPERED BOROSILICATE	
5	SEAL GASKET	2	GYLON	
6	CUSHION GASKET	2	FIBER	
7	INDICATOR	1	FLUTTER (PTFE)	DRIP TUBE (PTFE)

NOTES (REFERENCE PARTS LIST)

- (1) a. FLANGES BOLT HOLE PATTERN TO REFLECT ASME B16.5 CLASS 150 RF DIMENSIONS
- (2) ADDITIONAL ALLOYS AVAILABLE PER REQUEST
- (3) a. OPTIONAL MATERIALS AVAILABLE PER PROCESS CONDITIONS
- b. ADDITIONAL WINDOW OPTIONS AVAILABLE SEE SIDE SECTION FOR DETAILS
- 316 TRIM AVAILABLE SUITABLE FOR VACUUM SERVICES
- DESIGNED IN ACCORDANCE WITH ASME B31.1 & B31.3 FOR PRESSURE VERSUS TEMPERATURE RATINGS USING ONLY LISTED METALS IN FABRICATION



ASME PRESSURE / TEMP RATINGS	
TEMP	PRESSURE
°F (°C)	D. IRON
-20 TO 100 (-29 TO 37)	250 (17.2)
150 (66)	242 (16.7)
200 (93)	235 (16.2)
250 (121)	225 (15.5)
300 (149)	215 (14.8)
350 (177)	207 (14.3)
400 (204)	200 (13.8)
450 (232)	185 (12.8)
500 (260)	170 (11.7)



DIMENSIONS									
SIZE	LINING MIN THICK	A		B		C		APPROX. WEIGHT	
IN	IN	IN	mm	IN	mm	IN	mm	LBS	KGS
1	0.12	7.00	178	1.31	33	5.63	143	14.00	6.40
1 1/2	0.12	8.00	203	1.94	49	6.94	176	22.00	10.00
2	0.12	9.00	229	2.38	60	7.94	202	32.00	14.50
3	0.12	11.00	279	3.50	89	9.44	240	53.00	24.10
4	0.12	13.00	330	4.50	114	11.07	281	88.00	40.00
6	0.25	16.00	406	6.00	152	14.13	359	138.00	62.70