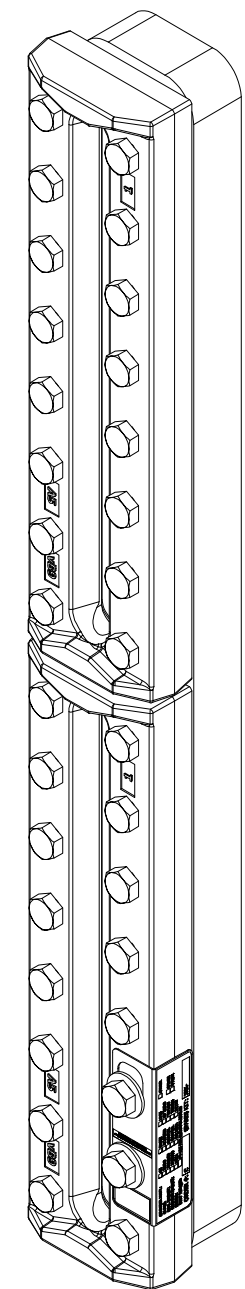
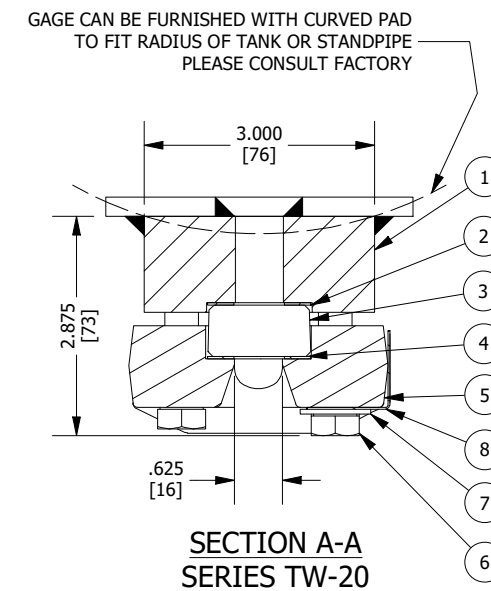
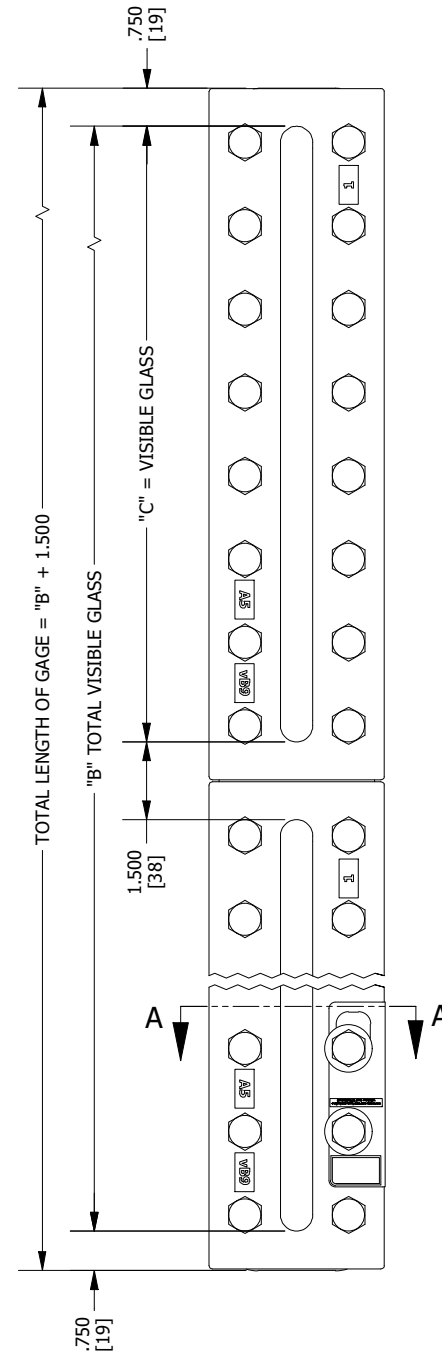
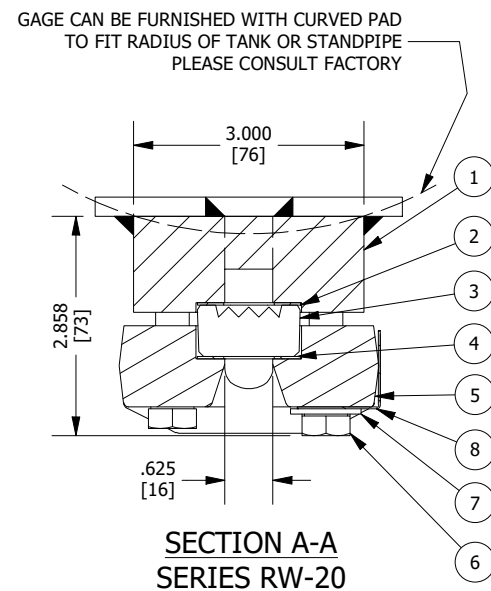


BILL OF MATERIAL (CARBON STEEL)					
NO.	NAME OF PART	QTY.	MATERIAL	PART NO.	SPECIFICATION
1	CHAMBER, TRANSPARENT	1	CARBON STEEL	V1 ## #.### A40	ASTM A36
1	CHAMBER, REFLEX	1	CARBON STEEL	V3 ## #.### A40	ASTM A36
2	GASKET	1 PER SECT.	IFG5500	V18980 #	
3	GLASS, TRANSPARENT	1 PER SECT.	BOROSILICATE	V16756 #	
3	GLASS, REFLEX	1 PER SECT.	BOROSILICATE	V16757 #	
4	CUSHION	1 PER SECT.	IFG5500	V18980 #	
5	COVER	1 PER SECT.	CARBON STEEL	V2M # A5	ASTM A105
6	BOLT	SEE CHART	ALLOY STEEL	P4527 B71	ASTM A193 GR.B7
7	WASHER	2	304SS	V13936 R	
8	TAG, RATING	1	304SS	V21864	

BILL OF MATERIAL (316SS PIC)					
NO.	NAME OF PART	QTY.	MATERIAL	PART NO.	SPECIFICATION
1	CHAMBER, TRANSPARENT	1	316/316LSS	V1 ## #.### TL2	ASTM A276 & ASME SA479
1	CHAMBER, REFLEX	1	316/316LSS	V3 ## #.### TL2	ASTM A276 & ASME SA479
2	GASKET	1 PER SECT.	IFG5500	V18980 #	
3	GLASS, TRANSPARENT	1 PER SECT.	BOROSILICATE	V16756 #	
3	GLASS, REFLEX	1 PER SECT.	BOROSILICATE	V16757 #	
4	CUSHION	1 PER SECT.	IFG5500	V18980 #	
5	COVER	1 PER SECT.	CARBON STEEL	V2M # A5	ASTM A105
6	BOLT	SEE CHART	ALLOY STEEL	P4527 B71	ASTM A193 GR.B7
7	WASHER	2	304SS	V13936 R	
8	TAG, RATING	1	304SS	V21864	

BILL OF MATERIAL (ALL 316SS)					
NO.	NAME OF PART	QTY.	MATERIAL	PART NO.	SPECIFICATION
1	CHAMBER, TRANSPARENT	1	316/316LSS	V1 ## #.### TL2	ASTM A276 & ASME SA479
1	CHAMBER, REFLEX	1	316/316LSS	V3 ## #.### TL2	ASTM A276 & ASME SA479
2	GASKET	1 PER SECT.	IFG5500	V18980 #	
3	GLASS, TRANSPARENT	1 PER SECT.	BOROSILICATE	V16756 #	
3	GLASS, REFLEX	1 PER SECT.	BOROSILICATE	V16757 #	
4	CUSHION	1 PER SECT.	IFG5500	V18980 #	
5	COVER	1 PER SECT.	316LSS	V438 # TL2	ASTM A276
6	BOLT	SEE CHART	316SS	P4527 B8M	ASTM A193 GR.B8M
7	WASHER	2	304SS	V13936 R	
8	TAG, RATING	1	304SS	V21864	

- NOTES:
- DIMENSIONS IN INCHES W/ mm EQUIVALENTS IN BRACKETS.
 - TW-20 GAGES FURNISHED W/ TRANSPARENT GLASS & SLOTTED CHAMBER DESIGN (TWO HOLE DESIGN OPTIONAL).
RW-20 GAGES FURNISHED W/ REFLEX GLASS & TWO HOLE CHAMBER DESIGN (SLOTTED DESIGN OPTIONAL).
 - DIMENSIONS OF TW-20 GAGES ARE THE SAME AS SHOWN FOR RW-20.
 - REFER TO THE FOLLOWING (FOR):
 - CATALOG BULLETIN J100.15 (ADDITIONAL INFORMATION).
 - IOM BULLETIN J500.11 (INSTRUCTIONS).
 - SEE PRICE SHEET BULLETINS FOR AVAILABLE OPTIONS.
 - "#" IN PART NUMBER INDICATES SIZE, NUMBER OF SECTIONS, AND RADIUS SIZE.
 - CONSULT FACTORY FOR ALTERNATE MATERIAL OPTIONS
 - STANDARD WELDING PAD GAGES WILL WITHSTAND LOADINGS DUE TO PRESSURE WITHIN THE GAGE ITSELF. BUT THEY ARE NOT DESIGNED TO REPLACE THE TANK STRENGTH LOST WHEN THE TANK WALL IS DRILLED OR SLOTTED. IT IS THEREFORE IMPOSSIBLE TO RATE THE WELDING PAD GAGES FOR IN-SERVICE USE. THE TANK FABRICATOR MUST PROVIDE SUITABLE TANK WALL REINFORCEMENT TO PREVENT THE PAD FROM BEING DISTORTED WHILE UNDER OPERATING CONDITIONS. SEE APPLICABLE JERGUSON UNIT FOR ADDITIONAL INFORMATION.
 - TRANSPARENT GAGE RATING VARIANCE:
 - 2000 PSI (141 KG/CM²) @ 100°F (38°C) FOR SIZE 1 GLASS (MAX. RATING)
 - 550 PSI (39 KG/CM²) @ 800°F (427°C) FOR SIZE 9 GLASS (MIN. RATING)
 - >550°F (288°C) REQUIRES GRAFOIL GASKETS
 - >600°F (316°C) REQUIRES GRAFOIL GASKETS & ALUMINOSILICATE GLASS
 - REFLEX GAGE RATING VARIANCE:
 - 3270 PSI (230 KG/CM²) @ 100°F (38°C) FOR SIZE 1 GLASS (MAX. RATING)
 - 1250 PSI (88 KG/CM²) @ 800°F (427°C) FOR SIZE 9 GLASS (MIN. RATING)
 - >550°F (288°C) REQUIRES GRAFOIL GASKETS
 - >600°F (316°C) REQUIRES GRAFOIL GASKETS & ALUMINOSILICATE GLASS



SIZE NO.	BOLTS PER SECT.	DIM. "C"	NUMBER OF SECTIONS			
			DIMENSION "B"			
			1	2	3	4
1	6	3.750 [95]	3.750 [95]	9.000 [229]	14.250 [362]	19.500 [495]
2	6	4.750 [121]	4.750 [121]	11.000 [279]	17.250 [438]	23.500 [597]
3	8	5.750 [146]	5.750 [146]	13.000 [330]	20.250 [514]	27.500 [699]
4	10	6.750 [171]	6.750 [171]	15.000 [381]	23.250 [591]	31.500 [800]
5	10	7.875 [200]	7.875 [200]	17.250 [438]	26.625 [676]	36.000 [914]
6	12	9.125 [232]	9.125 [232]	19.750 [502]	30.375 [772]	41.000 [1041]
7	14	10.250 [260]	10.250 [260]	22.000 [559]	33.750 [857]	45.500 [1156]
8	16	11.875 [302]	11.875 [302]	25.250 [641]	38.625 [981]	52.000 [1321]
9	16	12.625 [321]	12.625 [321]	26.750 [679]	40.875 [1038]	55.000 [1397]

11	02/11/2021	REDRAWN, UPDATED TO 2-HOLE CHAMBER DESIGN	CMN
REV	DATE	REVISION	BY

MANUFACTURED BY
Clark-Reliance®
 16633 FOLTZ PARKWAY
 STRONGSVILLE, OH 44149 USA
 (440) 572-1500 | www.clarkreliance.com
 © Clark-Reliance® Corporation. All Rights Reserved.

SERIES W20 WELD PAD GAGES

JERGUSON®

DRAWING NO.: **20-W-00**

REV.: **11**

DRAWN: CMN
 CHECKED: MK
 DATE: 02/11/2021
 REV: 11

TOLERANCES (U.O.N.):
 C/C Dimensions: ± .125"
 Dimension Spanning Welded Parts: ± .125"
 Angles: ± 1°
 (See PES-004 for details)