

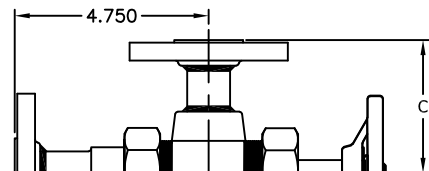
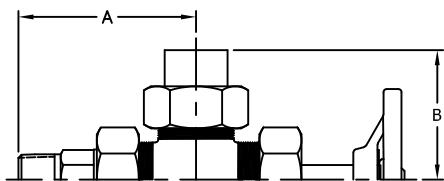
**STANDARD UNION CONNECTIONS**

NOTE: CHECK W/ FACTORY FOR  
NON-STANDARD CONNECTIONS  
NOT LISTED IN TABLES BELOW.

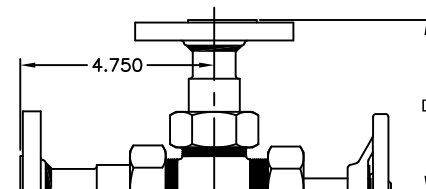
VALVES	"A" DIMENSION FOR UNION TANK CONNECTION							
	1/2 MNPT (OR MSW)	3/4 MNPT (OR MSW)	1 MNPT (OR MSW)	1/2 FNPT (OR FSW)	3/4 FNPT	1/2 MNPT SPH. (OR MSW)	1/2 FNPT SPH. (OR FSW)	3/4 MNPT SPH. (OR MSW)
140,60,60LE 360,90	3.688	3.688	4.125	2.813	2.813	4.313	3.438	4.313

VALVES	"B" DIMENSION FOR UNION GAGE CONNECTION							
	1/2 MNPT (OR MSW)	3/4 MNPT (OR MSW)	1 MNPT (OR MSW)	1/2 FNPT (OR FSW)	3/4 FNPT	1/2 MNPT SPH. (OR MSW)	1/2 FNPT SPH. (OR FSW)	3/4 MNPT SPH. (OR MSW)
144,147,64 64LE,67,67LE 364,94	3.563	3.563	4.000	2.688	2.688	4.188	3.313	4.188
74L,77L	4.063	4.063	4.500	3.188	3.188	4.688	3.813	4.688
74,77 84H,87H	4.438	4.438	4.875	3.563	3.563	5.063	4.188	5.063



**FLANGED UNION  
NON-UNION CONNECTIONS**

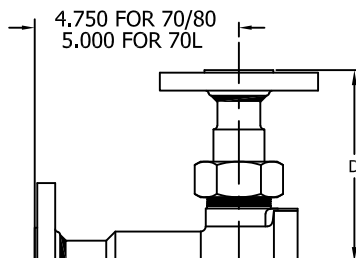
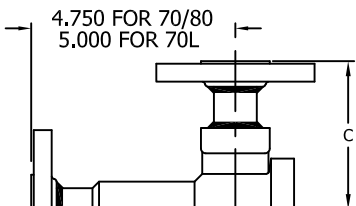


FLANGE SIZE	FLANGE RATING				VALVES
	150#	300#	600#	900# / 1500#	
1/2"	3.250	3.500	3.750	4.500	143,146 63,63LE 66,66LE 363 93
3/4"		3.750	4.000	4.750	
1"		4.000	4.250	5.250	
1-1/2"	3.750	4.250	4.750	5.500	
2"		4.250	4.750	5.500	
2-1/2"		4.250	4.750	5.500	
3"	3.750	4.250	4.750	5.500	

FLANGE SIZE	FLANGE RATING				VALVES
	150#	300#	600#	900# / 1500#	
1/2"	4.625	4.625	4.625	5.875	144,147
3/4"				6.000	64,64LE
1"				6.000	67,67LE
1-1/2"	4.625	4.625	4.625	5.688	364
2"				6.500	94
2-1/2"				6.750	
3"	4.625	4.625	4.625	6.063	N/A

USE TABLE 1 & 2 FOR FLANGED VENT / DRAIN CONNS. AS FOLLOWS:  
FOR INLINE VALVES,  
(TABLE 1 - .250") FOR 143, 144, 63, 64, 63LE, 64LE, 363, 364, 93, 94  
(TOP HALF TABLE 2 - .500") FOR 73L, 74L  
(BOT. HALF TABLE 2 - .875") FOR 73, 74, 84H  
FOR OFFSET VALVES, NO TABLE 1 & 2 ADJUSTMENT REQUIRED

TABLE 3 & 4: "N/A" = ASME B16.5 DOESN'T RECOGNIZE  
3"-900/1500#SW FLANGES



FLANGE SIZE	FLANGE RATING				VALVES
	150#	300#	600#	900# / 1500#	
1/2"	3.625	3.875	4.125	5.125	73L,76L
3/4"		4.375	4.625	5.625	
1"		4.750	4.625	5.625	
1-1/2"	3.875	4.750	4.625	5.625	73,76 86H 86HO
2"		4.750	5.000	5.875	
2-1/2"		4.375	5.000	5.125	
3"	4.375	5.000	5.125	5.875	
1/2"	4.000	4.250	4.500	5.500	73,76 86H 86HO
3/4"		4.250	4.500	5.500	
1"		4.250	4.500	5.500	
1-1/2"	4.250	4.750	5.000	6.000	74,77 84H,87H
2"		4.750	5.000	6.000	
2-1/2"		4.750	5.000	6.000	
3"	4.750	5.000	5.500	6.250	

FLANGE SIZE	FLANGE RATING				VALVES
	150#	300#	600#	900# / 1500#	
1/2"	5.125	5.125	5.125	6.375	74L,77L
3/4"				6.500	
1"				6.500	
1-1/2"	5.125	5.125	5.125	6.188	74,77 84H,87H
2"				7.000	
2-1/2"				7.250	
3"	5.125	5.125	5.125	6.563	N/A
1/2"	5.500	5.500	5.500	6.750	74,77 84H,87H
3/4"				6.875	
1"				6.875	
1-1/2"	5.500	5.500	5.500	6.563	74,77 84H,87H
2"				7.375	
2-1/2"				7.625	
3"	5.500	5.500	5.500	6.938	N/A

10	2/5/2020	UPDATED TABLES	CHANGE	JJK
REV	DATE			BY

MANUFACTURED BY  
**Clark-Reliance®**  
16633 FOLTZ PARKWAY  
STRONGSVILLE, OH 44149 USA  
PH: 440-572-1500  
WEB: www.clarkreliance.com

**JERGUSON®**  
OPTIONAL CONNECTIONS  
FOR VALVES

DRAWN: SH  
CHECKED: MK  
DATE: 11/6/09  
REVISION: 10 PER CDC 20-085  
DRAWING NO.: GD-1579  
REV.: 10