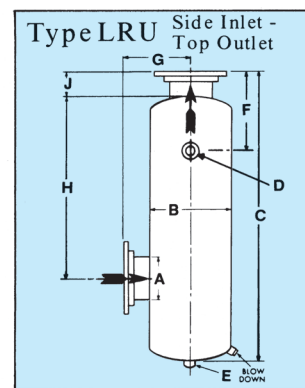
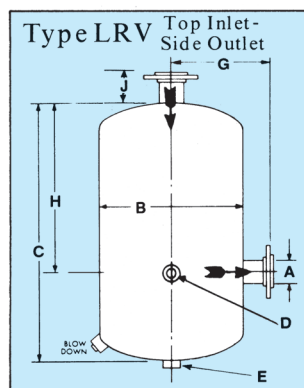
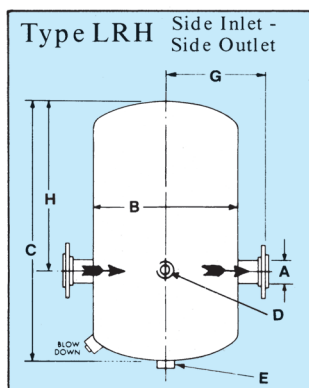
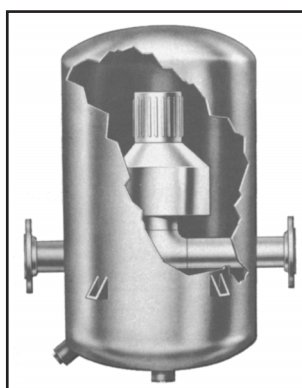


Type LR Separators are receiver type separators custom designed and engineered for handling heavy liquid loads and extremely large slugs of entrainment in vapor or gas handling systems. Consisting of an Anderson separator inside a large receiver, the sudden reduction of velocity that occurs once the gas or vapor flow passes the inlet, causes a large percentage of the entrainment to drop to the bottom of the separator. Any entrainment remaining is virtually eliminated by the centrifugal action of the separator inside the receiver.

Three inlet/outlet configurations are available to meet the widest range of installation requirements. Other nozzle arrangements are available upon request. Receiver Type LR Separators are installed in the vertical position only as shown. All vessels are designed, built, and stamped to ASME Code for Unfired Pressure Vessels.

Separators have forged steel flanges and welded steel bodies. All separators are available in alloy steel, monel or other metals.



* Dimensions in inches

Type LRH and LRV	2½	3	4	5	6	8	10	12	14	16	18	20	24	26	28	30	33	36
Nominal Pipe Size	A 2½	3	4	5	6	8	10	12	14	16	18	20	24	26	28	30	33	36
Min. Diameter	B 8¾	8¾	10¾	12¾	14	18	24	26	30	36	42	42	48	54	60	60	60	66
Min. Length	C 28	31	37	42	48	58	68	80	92	100	112	120	143	156	163	175	203	208
Vent Size	D 1/2	1/2	1/2	1/2	1/2	¾	¾	¾	¾	¾	¾	¾	¾	¾	¾	¾	¾	¾
Drain Size	E 1½	1½	1½	2	2	2	2½	2½	2½	2½	3	3	4	4	4	4	4	4
	G 9	9	10	11	13	15	18	19	21	25	29	29	33	39	42	43	46	50
	H 15	17	21	25	30	39	46	57	67	73	81	88	108	118	125	136	147	160
	J 5	5	5	5	6	6	6	6	6	7	7	7	8	10	11	11	12	13

* Dimensions in inches

Type LRU	2½	3	4	5	6	8	10	12	14	16	18	20	24	26	28	30	33	36
Nominal Pipe Size	A 2½	3	4	5	6	8	10	12	14	16	18	20	24	26	28	30	33	36
Min. Diameter	B 8¾	10¾	12¾	12¾	14	16	20	24	24	30	30	36	42	48	48	54	60	66
Min. Length	C 34	35	40	44	47	55	65	78	91	100	111	119	144	155	166	181	193	212
Vent Size	D 1/2	1/2	1/2	1/2	1/2	¾	¾	¾	¾	¾	¾	¾	¾	¾	¾	¾	¾	¾
Drain Size	E 1½	1½	1½	2	2	2	2½	2½	2½	2½	3	3	4	4	4	4	4	4
Vent Location	F 10	12	16	18	11	12	14	18	20	22	25	27	32	34	38	40	43	48
	G 9	9	11	12	13	14	16	18	18	21	22	25	29	34	35	38	42	46
	H 20	21	26	29	32	39	45	54	63	68	75	79	96	104	110	121	129	140
	J 4	4	4	4	6	6	6	6	6	6	7	7	7	7	8	8	8	9

* Dimensions listed are for 150 PSIG carbon steel vessels and will vary with pressure and materials of construction.