

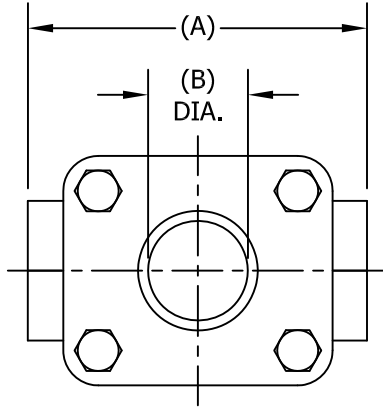
THIS DRAWING AND ALL INFORMATION ON IT IS THE PROPERTY OF THE CLARK-RELIANCE CORPORATION. IT IS CONFIDENTIAL AND IS GIVEN TO YOU FOR A LIMITED PURPOSE AND MUST BE RETURNED UPON REQUEST. NEITHER THIS DRAWING NOR ANY PART OF IT NOR ANY INFORMATION CONCERNING IT MAY BE COPIED, EXHIBITED OR FURNISHED TO OTHERS NOR MAY PHOTOGRAPHS BE TAKEN OF ANY ARTICLE FABRICATED OR ASSEMBLED FROM THIS DRAWING WITHOUT CONSENT OF THE CLARK-RELIANCE CORPORATION.



**JACOBY-TARBOX**<sup>®</sup>  
 A Product of the Clark-Reliance Corporation  
 16633 FOLTZ PARKWAY  
 STRONGSVILLE, OH 44149 USA  
 PH: +1 440-572-1500  
 www.clark-reliance.com

**SIGHT FLOW INDICATOR  
 MODEL S-100HPA-CL6 &  
 S-200HPA-CL6 & S-300HPA-CL6  
 FOR ASME CL600 SERVICE**

SECTION: T400  
 BULLETIN: T400.118  
 DATE: 08/02/17  
 SUPERSEDES: NEW RELEASE  
 FILE NO.: T400-118.DWG  
 DRAWN: MWS | CHECKED: DEP  
 SCALE: NONE



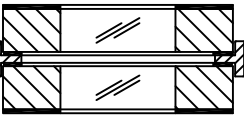
PARTS LIST			
PIECE NO.	PART NAME	QTY.	STANDARD DESIGN MATERIALS
1	BODY (SEE NOTE (1))	1	ASTM A216-WCB (CARBON STEEL) ASTM A351-CF8M (316 SS)
2	RETAINER (1)	2	ASTM A216-WCB (CARBON STEEL) ASTM A516 GR.70 (CARBON STEEL)
3	BOLT (1)	4	ASTM A354-BD (ALLOY STEEL)
4	NUT (1)	4	ASTM A194-2H (ALLOY STEEL)
5	WINDOW (2)	2	TEMPERED BOROSILICATE
6	SEAL GASKET (3)	2	NEOPRENE
7	CUSHION GASKET	2	FIBER
8	INDICATOR	1	DRIP TUBE (316SS)   FLUTTER (PTFE) FLAPPER (316SS)   ROTOR (PTFE)   GAS INDICATOR (PTFE)



NOTES (REFERENCE PARTS LIST)

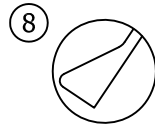
(1) ADDITIONAL ALLOYS AVAILABLE PER REQUEST  
 (2) a. OPTIONAL MATERIALS AVAILABLE PER PROCESS CONDITIONS  
 b. ADDITIONAL WINDOW OPTIONS AVAILABLE SEE SIDE SECTION FOR DETAILS  
 (3) COMMON OPTIONAL SEAL MATERIALS AVAILABLE  
 PTFE  GRAPHITE  FIBER

DESIGNED IN ACCORDANCE WITH ASME B31.1 & B31.3 FOR PRESSURE VERSUS TEMPERATURE RATINGS USING ONLY LISTED METALS IN FABRICATION

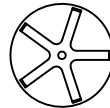
(2) b.   UNIGLAS WINDOW

 DUAL UNIGLAS WINDOW

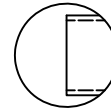
 FULL VIEW DUAL WINDOW  
  FM APPROVED



FLAPPER  
 S-100HPA-CL6



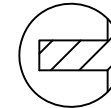
ROTOR  
 S-300HPA-CL6



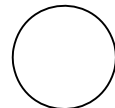
DRIP TUBE  
 S-200HPA-CL6



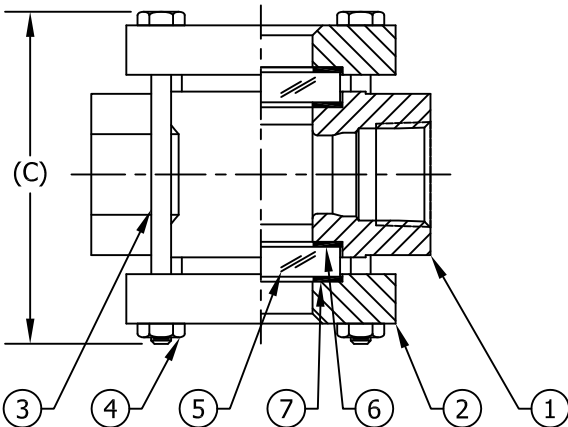
GAS INDICATOR  
 S-100HPA-CL6-GI



FLUTTER  
 S-100HPA-CL6-FLTR



NO INDICATOR  
 S-100HPA-CL6-(NF)



ASME PRESSURE / TEMP RATINGS PSIG / °F (BAR / °C)		
TEMP °F (°C)	PRESSURE	
	STEEL	316 SS
-20 TO 100	1480 (102.0)	1440 (99.3)
150 (66)	1420 (97.9)	1340 (92.4)
200 (93)	1360 (93.8)	1240 (85.5)
250 (121)	1335 (92.1)	1180 (81.4)
300 (149)	1310 (90.3)	1120 (77.2)
350 (177)	1288 (88.8)	1075 (74.1)
400 (204)	1265 (87.2)	1025 (70.7)
450 (232)	1235 (85.2)	990 (68.3)
500 (260)	1205 (83.1)	955 (65.8)

FOR TEMPERATURES ABOVE 500°F (260°C) REFER TO ASME B16.5 FOR PRESSURE RATINGS

DIMENSIONS								
NPT SIZE	A		B		C (*)		APPROX. WEIGHT	
	IN	mm	IN	mm	IN	mm	LBS	KGS
1/4	3.750	95	0.813	21	4.250	108	7.20	3.27
3/8	3.750	95	0.813	21	4.250	108	7.20	3.27
1/2	4.500	114	1.063	27	5.000	127	13.20	5.99
3/4	4.500	114	1.063	27	5.000	127	13.20	5.99
1	4.880	124	1.250	32	5.500	140	14.40	6.53
1 1/4	6.000	152	2.000	51	7.500	191	24.00	10.89
1 1/2	6.000	152	2.000	51	7.500	191	24.00	10.89
2	6.000	152	2.000	51	7.500	191	24.00	10.89

(\*) STANDARD BOLT LENGTH SHOWN. OPTIONAL WINDOW MATERIALS OR USE OF STUDS MAY INCREASE LENGTH FOR SINGLE WINDOW (1 PER SIDE) TEMPERED GLASS