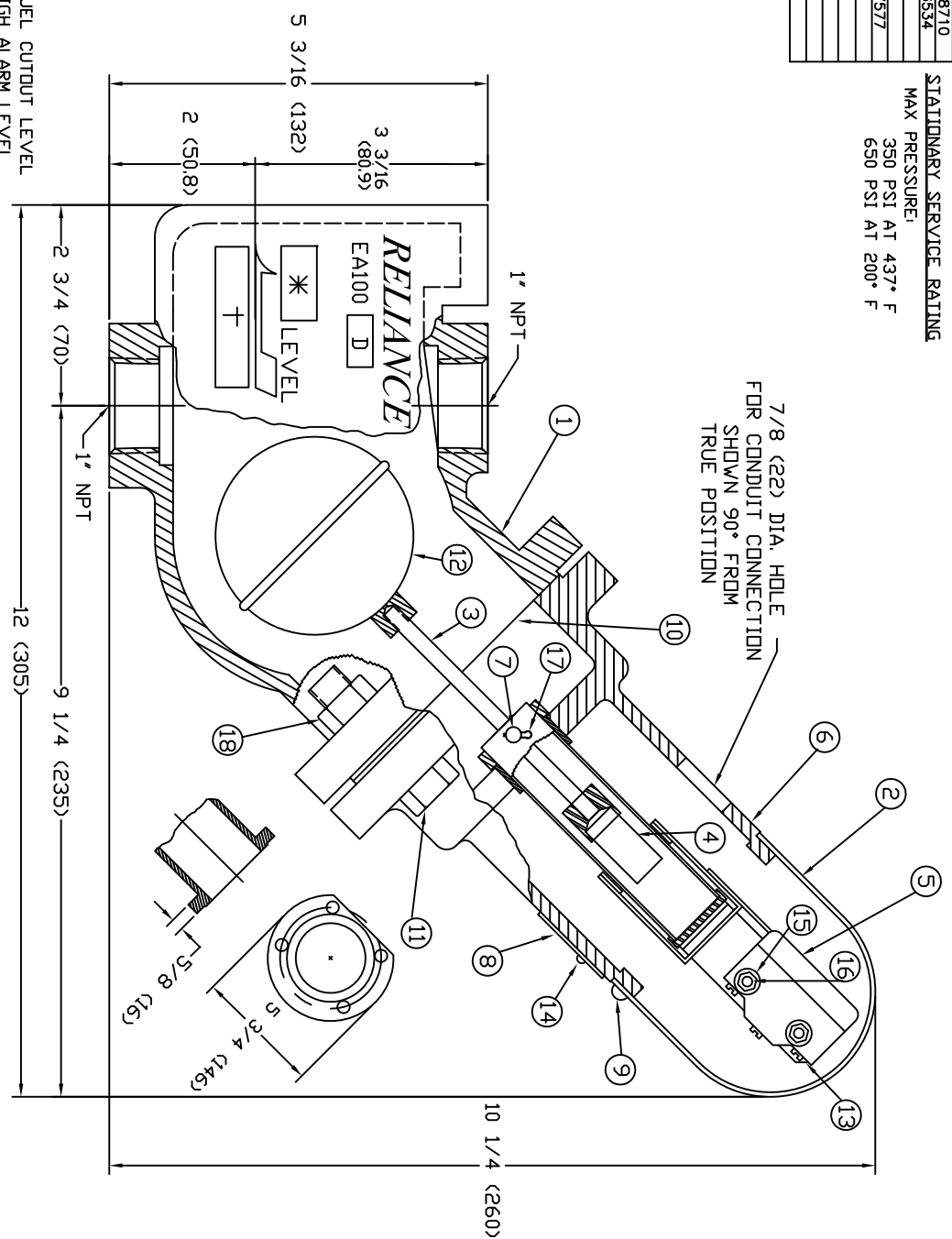
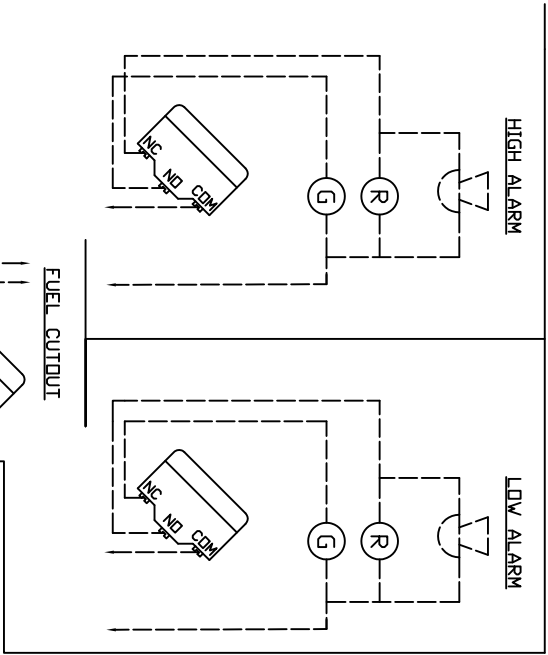


ITEM	QTY.	DESCRIPTION	PART NO.	MAT'L SPEC	DWG. NO.
1	1	BODY	EA100D-1	STEEL	B-8837
2	1	SWITCH COVER	EA100-23	MONEL B127-58	B-8838
3	1	CONNECTOR ROD ASSEMBLY	EA100-12	STAINLESS STEEL 18-8	B-8838
4	1	MAGNET ASSEMBLY	EA100-13	ALUMINUM V. NICKEL PLATED	B-8838
5	1	SWITCH ASSEMBLY	EA100-14X	STEEL	B-8838
6	1	SWITCH HOUSING ASSEMBLY	EA100R-27D	STEEL	B-8838
7	1	LEVER PIN	EA100-21	STAINLESS STEEL 18-8	B-9838
8	1	NAME PLATE	EA100-17	ALUMINUM	B-28-39
9	1	RHMS 10 - 32 X 3/8	EA100-17	ALUMINUM	B-28-39
10	1	GASKET	EA100-17	STEEL	A-6534
11	4	CAP BOLT 1/2 - 13 X 2	X172372	STEEL A193 GR. B-7	A-6534
12	1	SWITCH INSULATOR	F55	FIBER	A-7577
13	1	FLOAT	E66-15	STAINLESS STEEL A40 TROU	A-7577
14	2	METALLIC DRIVE SCREW U4 X 3/8	X173260	STEEL	A-7577
15	2	SHAKEPROOF #6 LOCK WASHER	X174280	STEEL	A-7577
16	2	R.H. SCREW & NUT 6-32 X 1	X172960	BRASS	A-7577
17	2	COUNTER PIN 1/2 X 1	X171700	STAINLESS STEEL 18-8	A-7577
18	4	HEVY HEX NUT 1/2 - 13	X171501	STEEL A194 GR. 2H	A-7577

NOTES:  
 MICRO SWITCH, TYPE BZ-GRW82444-A2  
 UNDERWRITER APPROVED  
 FOR THE FOLLOWING RATINGS:  
 5A-125,250, DR 480 VAC  
 1/2A-125 VDC  
 1/4A-250 VDC

STATIONARY SERVICE RATING  
 MAX PRESSURE:  
 350 PSI AT 437° F  
 650 PSI AT 200° F



\* STAMP F.C.-FOR FUEL CUTOFF LEVEL  
 H.A.-FOR HIGH ALARM LEVEL  
 + L.A.-FOR LOW ALARM LEVEL

STAMP 350 WSP - FOR STEAM SERVICE  
 650 PSI AT 200° F (DNLY WHEN SPECIFIED)

REV	DATE	DESCRIPTION	CHANGE	SRM	BY
19	03/15/2013	X178710 WAS X172910 PER CDC 13-092			

MANUFACTURED BY

**Clark-Reliance®**

16633 FOLTZ PARKWAY  
 STRONGSVILLE, OH 44149 USA  
 PH: 440-572-1500  
 WEB: www.clarkreliance.com

**CLARK-RELIANCE®**

EA100D LEVALARM ASSEMBLY

PART NUMBER: REA100D  
 TOLERANCE CLASS (PER PES-004): TOLERANCES DEFINED BY PES-004

MATERIAL:

REVISION: REDRAWN, NO CHANGE

DRAWN: CG DRAWING NO.: B-15290

CHECKED: ST

DATE: 8/17/10

REV: 19

HYDRASTATIC TEST - 975 PSI